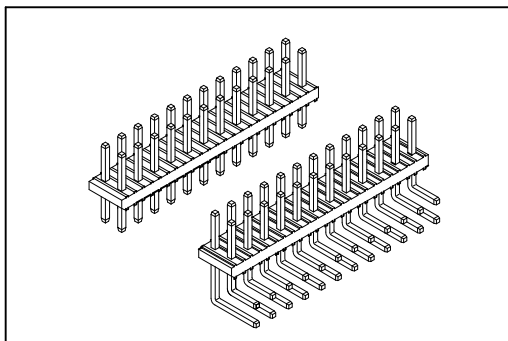




2111 Series

Pin Header 2.0mmX2.0mm(0.079"X0.079")



Material:

Housing: High Temperature Plastic UL94V-0.

Contacts: Copper Alloy.

Electrical Characteristics:

Current Rating: 1 A.

Dielectric Withstanding Voltage: AC 500V.

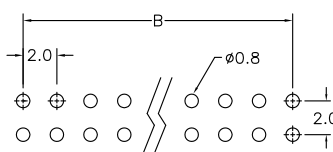
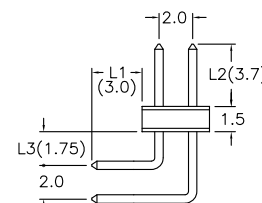
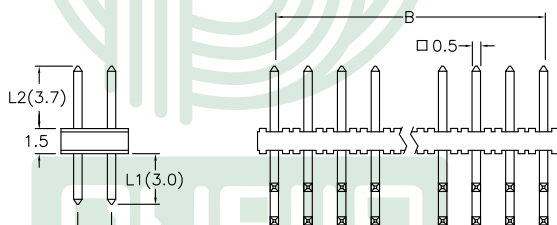
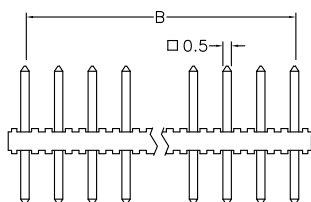
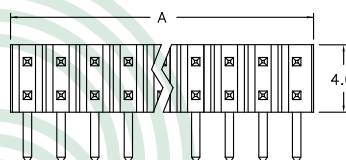
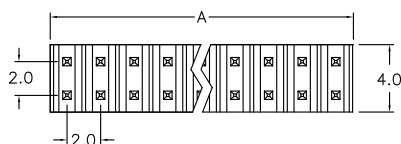
Insulator Resistance: 1000MΩ min.

Contact Resistance: 20mΩ max.

Operating Temperature: -40°C~+105°C.

Features:

- * Low profile 1.50mm (0.059")
 - * Available in Straight and Right Angle.
 - * Side-to-side and end-to-end stackable.
 - * Custom design provides wide product flexibility.
 - * Additional plating options available.
- Mates with: 1101,2106,2141,2142,2143,2145,2148.



P.C. Board Layout

Position Dimension	4 Thru 80
A	2.0 X No. of Positions /2
B	2.0 X No. of Positions /2-2.0

Ordering information

2111- Series **2** Double Row **X** **40** No. of Pin Per Row **G** G: Gold Plated **00** 00: G/F **S** S: Straight R: Right Angle **B** B: Bulk Package

Custom Design: Straight (i.e. 2111-2 X 40 G00S-L1-L2); Right Angle (i.e. 2111-2 X 40 G00R-L1-L2-L3).
 L1: Dip Length; L2: Mating Length; L3: Extended Length (Currently only 1.75mm available.).