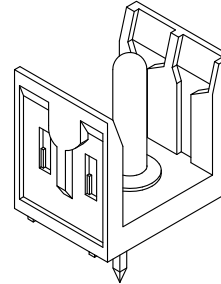
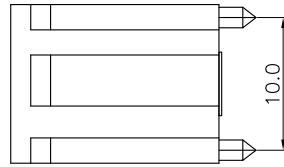
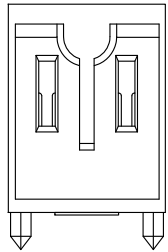


REV.	SPECIFICATION	ECN NO.	APPD.
R6		ECN250317	



Material and planting:

Housing: LCP, UL94V-0, Beige.

Contacts: Phosphor Bronze.

Gold Plated on Contact Area and 80u" Min Tin Plated on Solder Tail over nickel 50u" Min .

Electrical Characteristics:

Current Rating: 30 A.

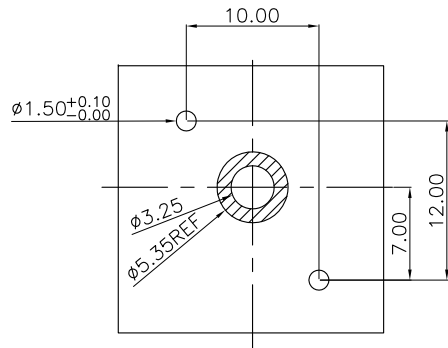
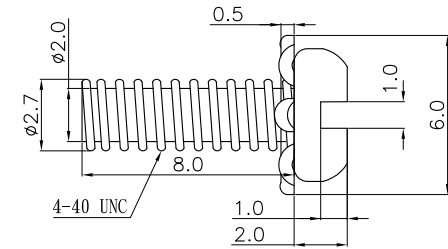
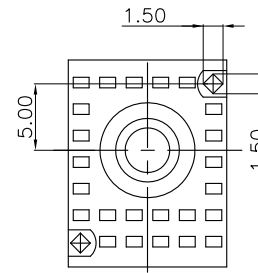
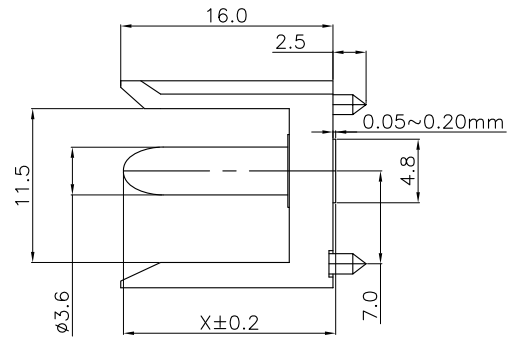
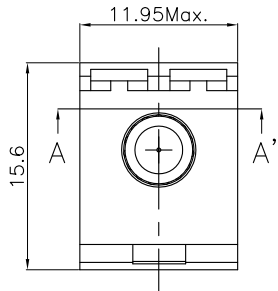
Dielectric Withstanding Voltage: AC 1000V For 1 minute.

Insulator Resistance: 5000M Ω min. at DC 500V.

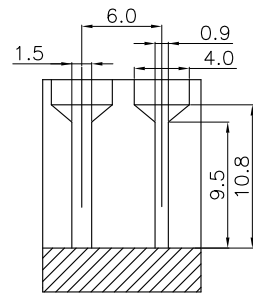
Contact Resistance: 10m Ω max. at DC 100mA.

Operating Temperature: -65°C~+125°C.

RoHS Compliant.



P.C. Board Layout
Tolerance±0.05



Section A-A'

9111- 14 3 B xxx G xx U
 Series | 14: 4Rows Housing | 3: Male | B: Power contact | xxx: see product No | G: Gold Plated | xx: 00:G/F | U: Tube Package | 30: 30 u"

Product No.	X
9111-143B001GxxU	14.5
9111-143B002GxxU	16.0

Tolerances	Dwg. No.	9111D14301
x = ±0.5	Projection	
.x = ±0.25	Unit	mm
.xx = ±0.15	Scale	1:1
	Drawn By	XM 03/11'25

Title:
 9111 Series
 H.D.2.0mm Male
 Power Connector

OUPIIN ELECTRONIC(KUNSHAN) CO., LTD.			
P/N: 9111-143BxxxGxxU			
SHEET	1/1	Ver.No.	R6