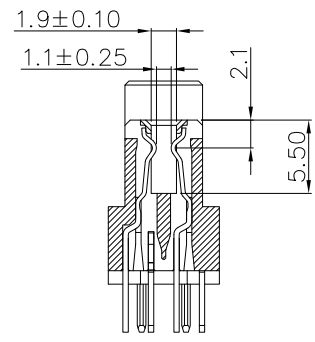
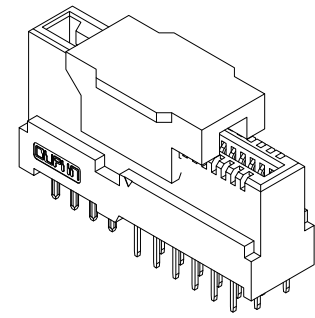
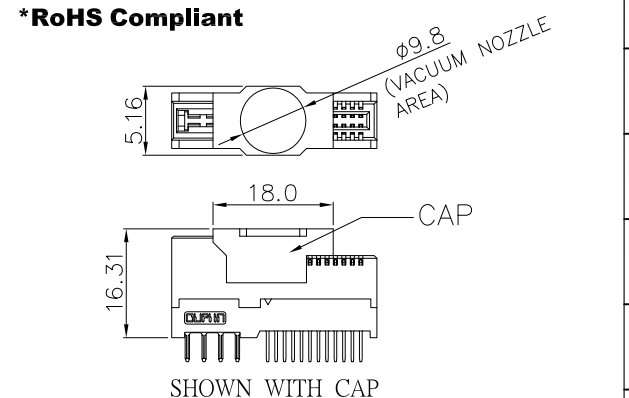


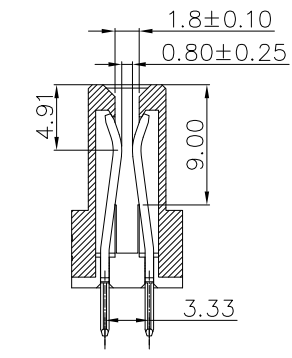
REV.	SPECIFICATION	ECN NO.	APPD.
R1	NEW	ECN250202	

Material and Plating:
Housing: LCP, BLACK , UL94V-0.
Power Contacts: High Conductivity Copper.
Au+Pd/Ni on Contact Area and 80u" Min Tin
Plated on solder tail over Nickel 50u" .
Signal Contacts: Copper Alloy.
Au+Pd/Ni on Contact Area and 80u" Min Tin
Plated on solder tail over Nickel 50u" .

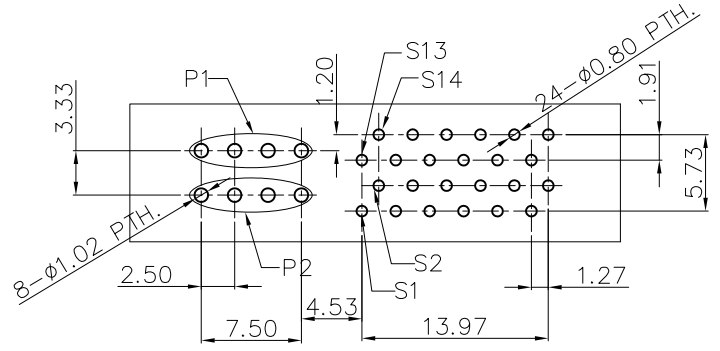
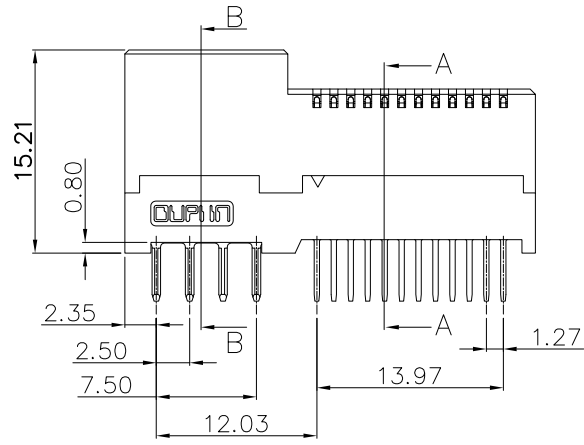
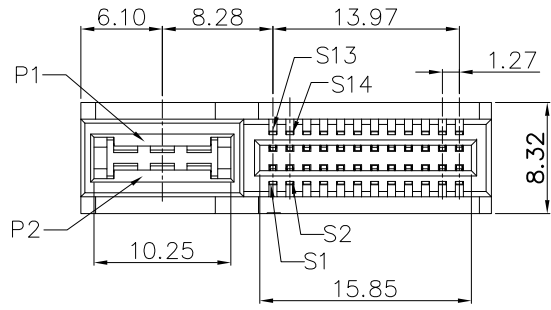
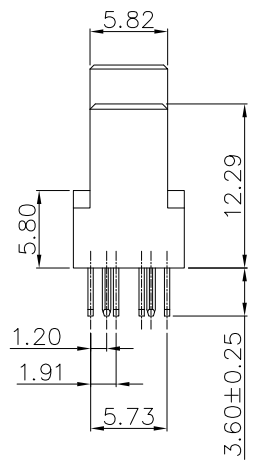
Electrical Characteristics:
Current Rating: Signal Pin 1.0 AMP.
Power Pin 30 AMP.
Insulator Resistance: 5000MΩ min. at DC 500V.
Dielectric Withstanding Voltage:
Signal Pin DC 1500V For 1 minute.
Power Pin DC 1500V For 1 minute.
Contact Resistance: Signal Pin 20mΩ max. at DC 20mA.
Power Pin 20mΩ max. at DC 20mA.
Operating Temperature: -40°C ~+105°C .



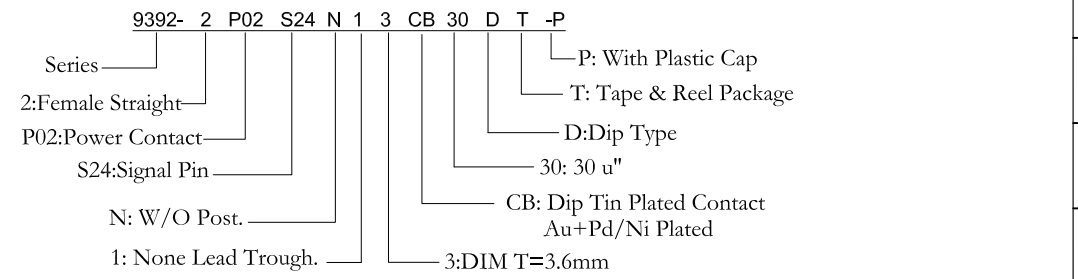
Section A-A
Scale:1:1



Section B-B
Scale:1:1

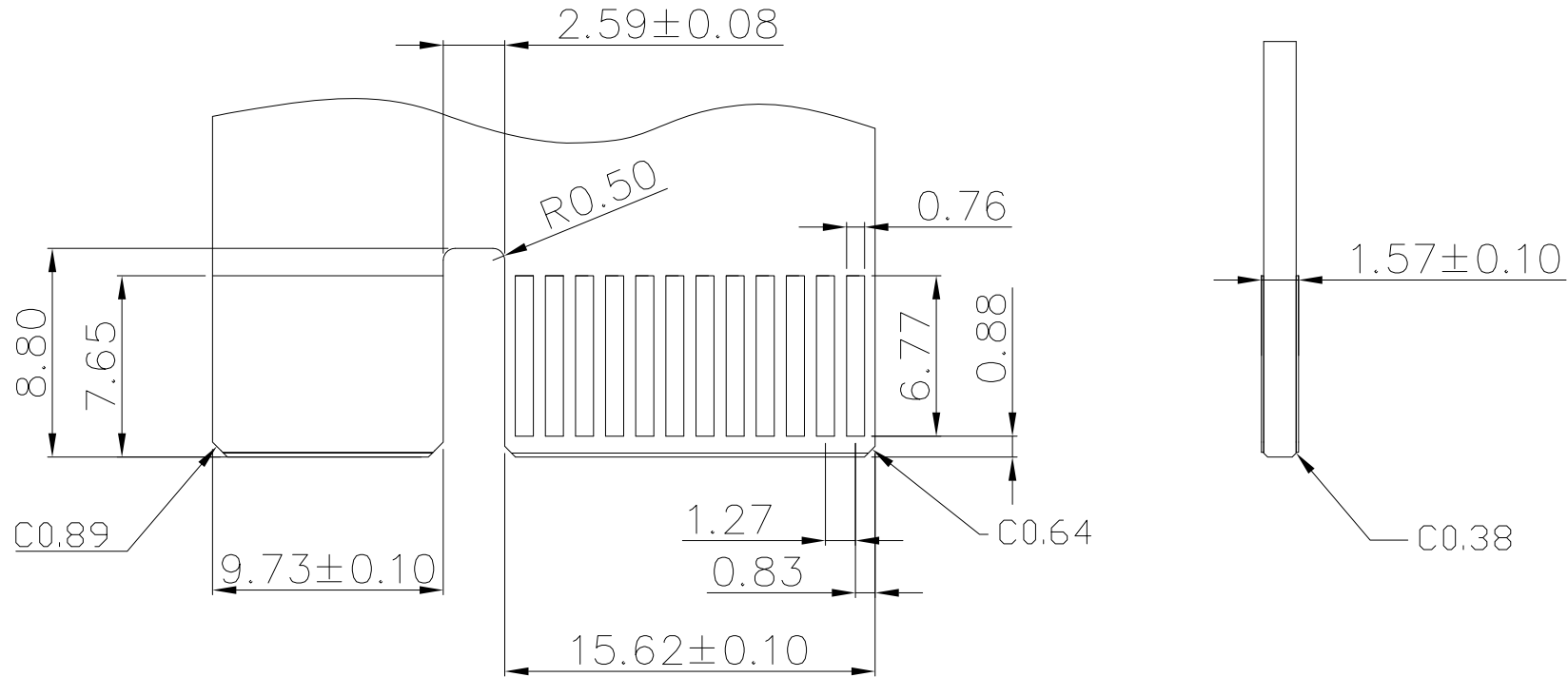


P.C.B LAYOUT (TOP VIEW)
(THICKNESS IS 3.00mm;TOLERANCE:±0.05)



Tolerances	Dwg. No.	9392-D0000-067	Title:		9392 Series Low Profile Hybrid Power Receptacle			
x = ±0.5	Projection		 OUPIIN ELECTRONIC(KUNSHAN) CO., LTD. P/N: 9392-2P02S24N13CB30DT-P					
.x = ±0.25	Unit	mm					Scale	1:1
.xx = ±0.15	Drawn By	GYJ 02/06'25						
SHEET		1/2	Ver. No.	R1				

REV.	SPECIFICATION	ECN NO.	APPD.
R1	NEW	ECN250202	



Recommended Edge Card Layout
(Tolerance:±0.05)

Tolerances	Dwg. No.	9392-D0000-067	
x = ±0.5	Projection		
.x = ±0.25	Unit	mm	Scale 1:1
.xx = ±0.15	Drawn By	GYJ 01/06'25	

Title:	9392 Series Low Profile Hybrid Power Receptacle
--------	---

OUPIIN ELECTRONIC(KUNSHAN) CO., LTD.			
P/N: 9392-2P02S24N13CB30DT-P			
SHEET	2/2	Ver. No.	R1