

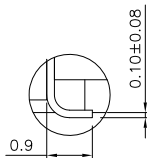
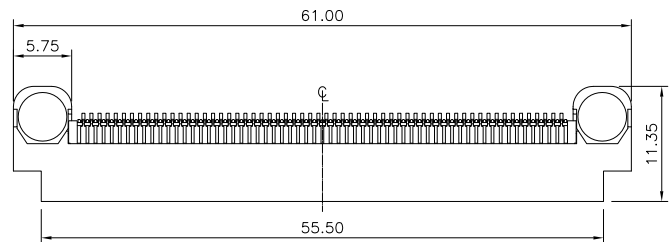
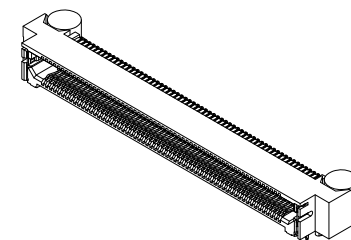
REV.	SPECIFICATION	ECN NO.	APPD.
R1		ECN240341	

Material and Plating:

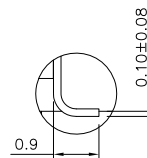
Housing: LCP, UL94V-0, Black.
 Contacts: Phosphor Bronze
 Gold Plated on Contact Area and 80u" Min
 Tin Plated on Solder Tail over nickel 50u" Min .
 Counterweight: Brass
 Latches: Phosphor Bronze

Electrical Characteristics:
 Current Rating: 1.4 AMP.
 Dielectric Withstanding Voltage: AC 900V.
 Insulation Resistance: 50000MΩ min.
 Contact Resistance: 25mΩ max.
 Operating Temperature: -55°C~+125°C.

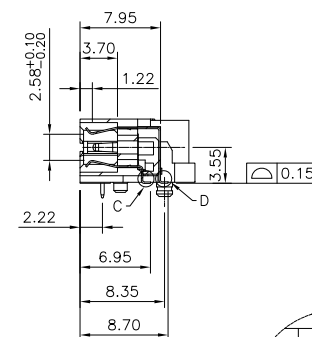
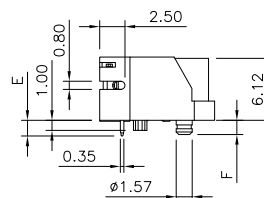
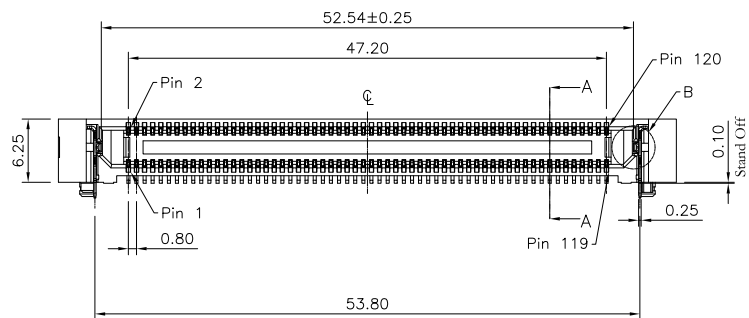
***RoHS Compliant**



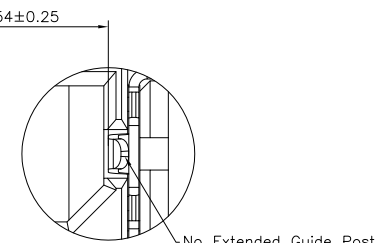
Detail C
Scale 5:1



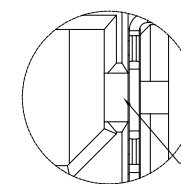
Detail D
Scale 5:1



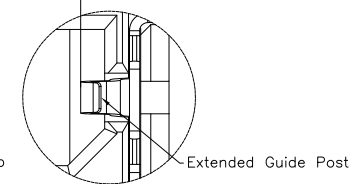
Section A-A



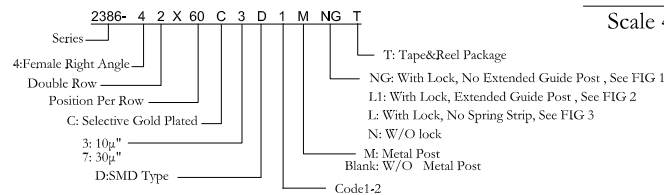
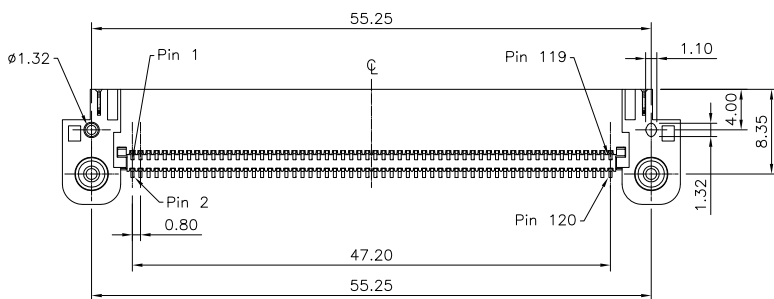
Detail B (FIG 1)
Scale 4:1



Detail B (FIG 3)
Scale 4:1



Detail B (FIG 2)
Scale 4:1

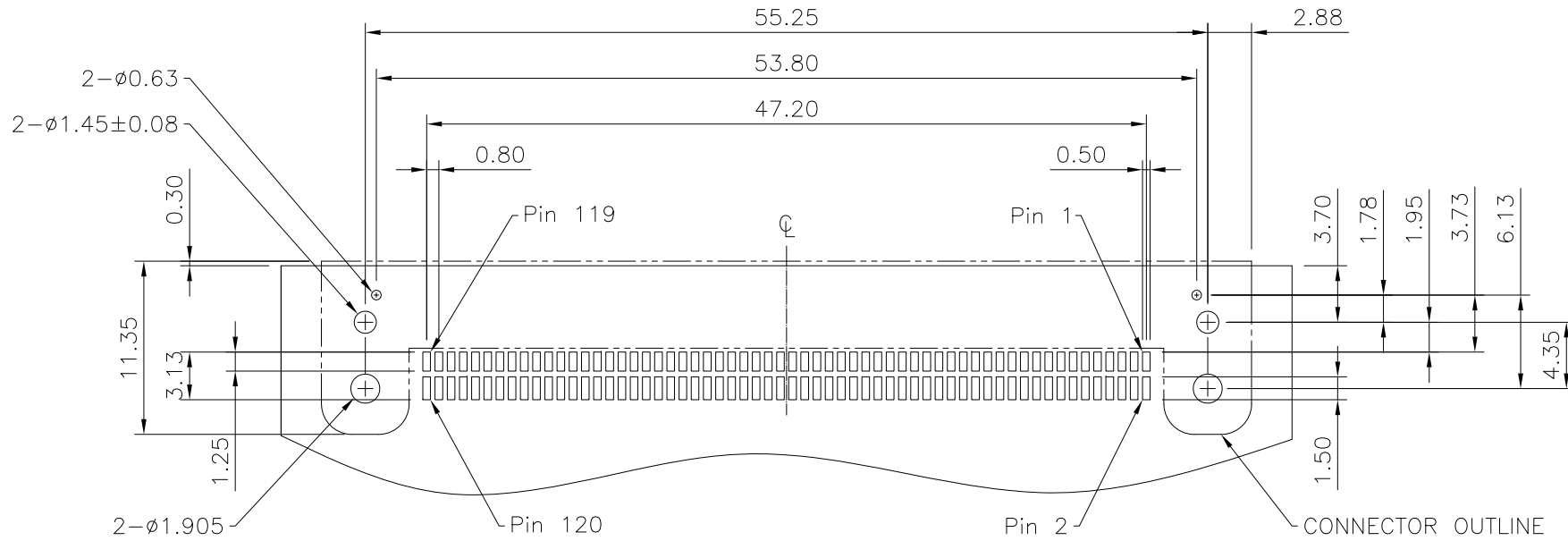


PCB Thickness	Code	Lock	Metal Post
Dimension		E	F
1.58	1	1.55	1.40
2.36	2	2.34	2.19

Tolerances	Dwg No.	2386-D0000-029	Title:
x = ±0.50	Projection		2386 Series
.x = ±0.25	Unit	mm	Female Right Angle
.xx = ±0.15	Scale	1:1	
	Drawn By	WP 03/29'24	

OUPIN			
OUPIN ELECTRONIC(KUNSHAN) CO., LTD.			
P/N: 2386-42X60C3D1MNGT			
SHEET	1/2	Ver.No.	R1

REV.	SPECIFICATION	ECN NO.	APPD.
R1		ECN240341	



Recommended PCB Layout
(Tolerance: ±0.05)

Tolerances	Dwg No.	2386-D0000-029		Title:	
x = ±0.50	Projection			2386 Series Female Right Angle	
.x = ±0.25	Unit	mm	Scale		1:1
.xx = ±0.15	Drawn By	WP 03/29'24			

Title:			
2386 Series			
Female Right Angle			

OUPIIN ELECTRONIC(KUNSHAN) CO., LTD.			
P/N: 2386-42X60C3D1MNGT			
SHEET	2/2	Ver.No.	R1