

REV.	SPECIFICATION	ECN NO.	APPD.

Male

Female

Material:

Housing: PBT, UL94V-0, Black.

Contacts: Brass, Gold Plated on Contact Area and Gold Flash on Solder Tail over Nickel 50u".

Shell: Steel, 60u" Nickel over 50u" copper.

Clinch Nut: Brass, 50u" Nickel Plated.

Broadlock: Steel, 80u" Tin Plated.

Electrical Characteristics:

Current Rating: 3 AMP.

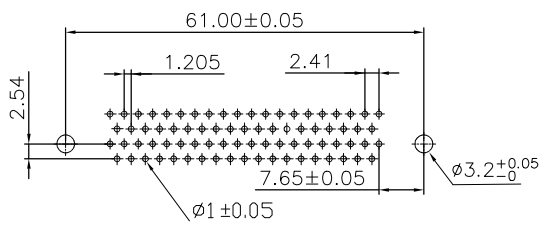
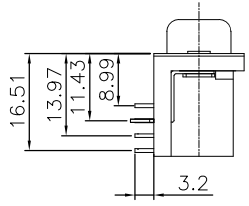
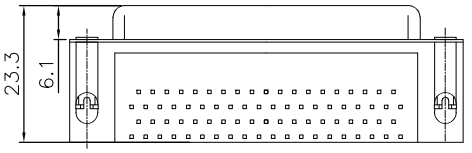
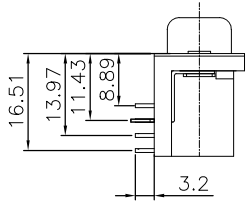
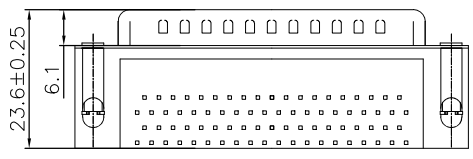
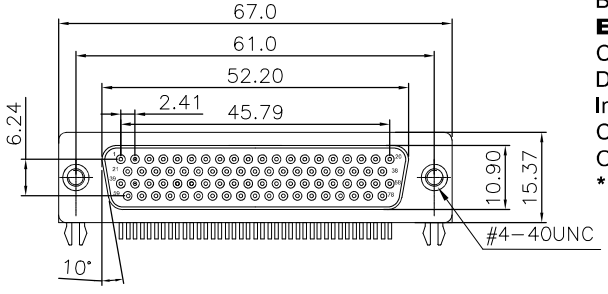
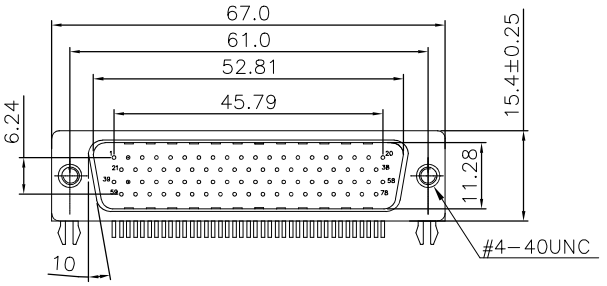
Dielectric Withstanding Voltage: AC 1000V.

Insulator Resistance: 1000MΩ min.

Contact Resistance: 20mΩ max.

Operating Temperature: -55°C~+105°C.

***RoHS Compliant**



RECOMMENDED PCB LAYOUT

7916-A

78

x

B

A

Series

Positions

M: Male

F: Female

B: With Grounding Forks and With Riveted Threaded Inserts.

A: Tray Package

Tolerances	Dwg No.	S0220220921-05		Title:	7916-A Series			
x. = ±0.38	Projection				H.D. D-SUB			
.x = ±0.25	Unit	mm	Scale	1:N	Right Angle Type			
.xx = ±0.13	Drawn By	Martin 09/21'22		① 747				
					OUPIIN ELECTRONIC(KUNSHAN) CO., LTD.			
					P/N: 7916-A78MBA&7916-A78FBA			
SHEET		1/1		Ver.No.		X1		