

REV.	SPECIFICATION	ECN NO.	APPD.
X3			

Material and Plating:

Housing: LCP, UL94V-0, Black.

Signal Contacts : Brass

30u" Au+Pd/Ni on Contact Area and 80u" Min Tin Plated on Press Fit over nickel 50u" Min.

Electrical Characteristics:

Current Rating: 2.5 AMP.

Dielectric Withstanding Voltage: DC 1000V For 1 minute.

Insulator Resistance: 5000MΩ min. at DC 500V.

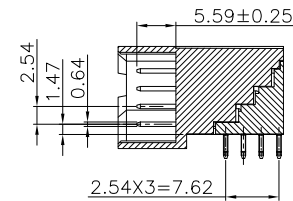
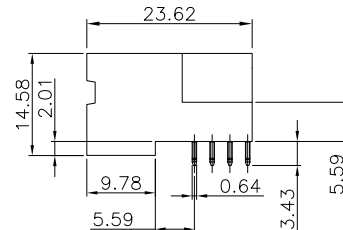
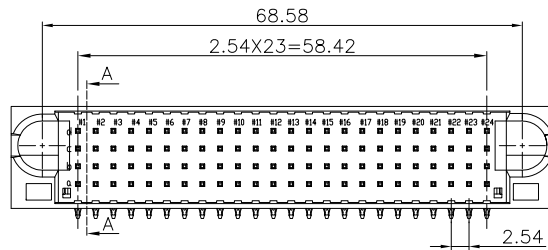
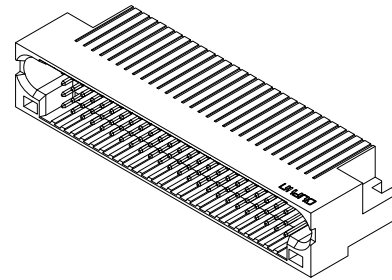
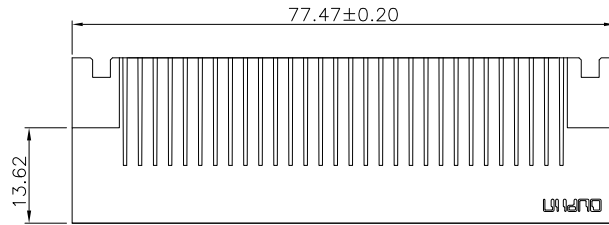
Contact Resistance: 15mΩ max. at DC 20mA.

Operating Temperature: -40°C ~+105°C .

***RoHS Compliant**

Notes 1 :

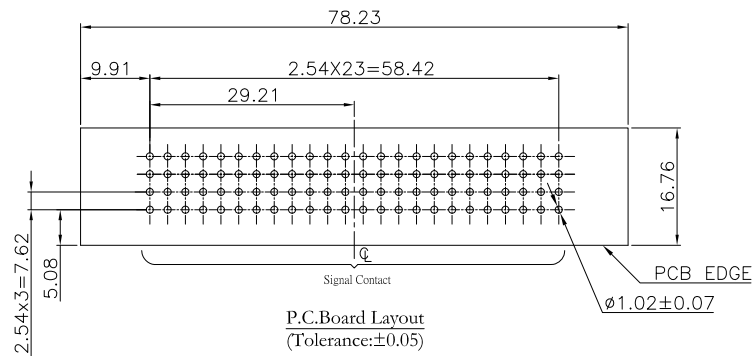
S: Signal---PCB Mount 2.54mm Pitch



Section:A-A
Scale:1:1

ROWS	SIGNAL																							
	1	2	3	4	5	6	7	8	9	10	11	12	13	14	15	16	17	18	19	20	21	22	23	24
D	E	E	E	E	E	E	E	E	E	E	E	E	E	E	E	E	E	E	E	E	E	E	E	E
C	E	E	E	E	E	E	E	E	E	E	E	E	E	E	E	E	E	E	E	E	E	E	E	E
B	E	E	E	E	E	E	E	E	E	E	E	E	E	E	E	E	E	E	E	E	E	E	E	E
A	E	E	E	E	E	E	E	E	E	E	E	E	E	E	E	E	E	E	E	E	E	E	E	E

SIGNAL PIN CONTACT LENGTH 5.59mm E



9391-A 1 S96 CB 30 P A

Series ————
 1: Male Right-angle
 Blank:Without Contact
 Signal Contact: S xx
 No. of position ————
 CB: Dip Tin Plated
 Contact Au+Pd/Ni Plated

————— A: Tray Package
 ————— P: Press-Fit Type
 ————— 30: 30u"

Tolerances	Dwg. No.	9391-D0000-370	Title:		OUPIN OUPIN ELECTRONIC(KUNSHAN) CO., LTD. P/N: 9391-A1S96CB30PA	
x = ±0.5	Projection		9391 Series Male Right-angle Press Fit Type			
.x = ±0.25	Unit	mm				Scale
.xx = ±0.15	Drawn By	XS 02/06'23				
			SHEET	1/1	Ver. No.	X3