

REV.	SPECIFICATION	ECN NO.	APPD.
R6		ECN211029	

**Material and Plating:**

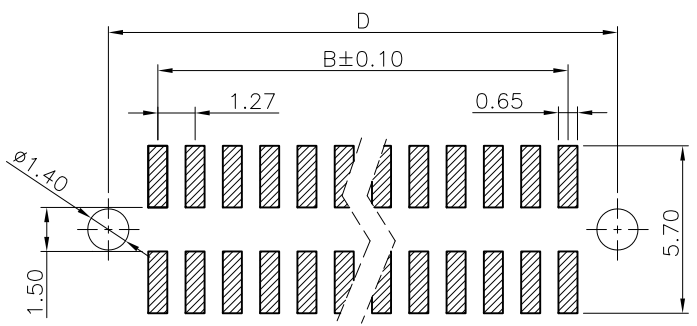
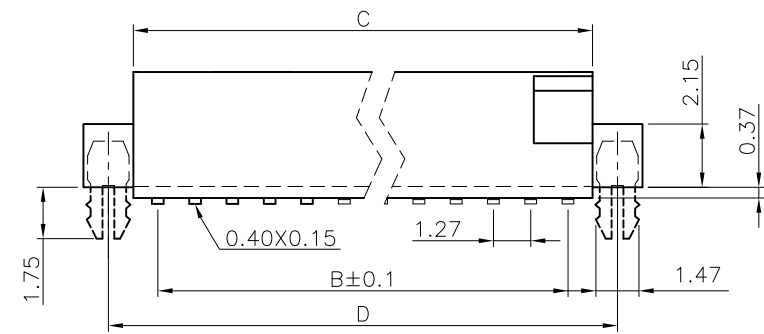
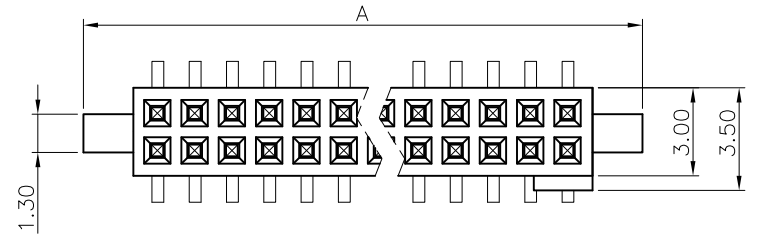
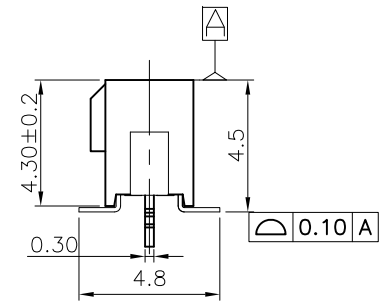
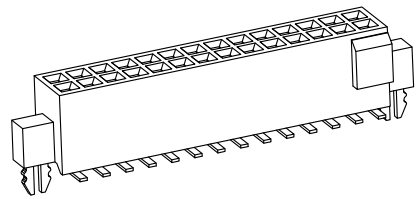
Housing: LCP, UL94V-0, Black.  
 Contacts: Phosphor Bronze.  
 Lock: Phosphor Bronze.  
 Gold Plated on Contact Area and 80u" Min Tin or Gold Flash Plated on Solder Tail over 50u" Min Nickel.

**Electrical Characteristics:**

Current Rating: 1 AMP.  
 Dielectric Withstanding Voltage: AC 500V For 1 minute.  
 Insulator Resistance: 1000MΩ min. at DC 500V.  
 Contact Resistance: 20mΩmax. at DC 100mA.  
 Operating Temperature: -65°C ~ +125°C.

**\*RoHS Compliant**

Insertion Depth: 1.90mm to 2.90mm



P.C.Board Layout  
(Tolerance: ±0.05mm)

2243- xx C xx D L U  
 Series ———  
 No. of Position ———  
 C: Selective  
 Gold Plated  
 G: Gold Plated  
 U: Tube Package  
 L: With Board Lock  
 O: Without Board Lock  
 D: Surface Mount  
 00: G/F  
 10: 10 μ"  
 15: 15 μ"  
 30: 30 μ"

Position	10 Thru 100
Dimension	
A	1.27 X No. of Positions/2 +3.78
B	1.27 X No. of Positions/2 -1.27
C	1.27 X No. of Positions/2 +0.38
D	1.27 X No. of Positions/2 +1.91

Tolerances	Dwg. No.	2243D02004	Title:
x = ±0.5	Projection		2243 Series P.C.B. Socket 1.27mmX1.27mm
.x = ±0.25	Unit	mm	
.xx = ±0.15	Scale	1:1	
	Drawn By	ZY 10/20'21	

**OUPIN**  
 OUPIN ELECTRONIC(KUNSHAN) CO., LTD.  
 P/N: 2243-xxCxxDL(O)U

SHEET	1/1	Ver.No.	R6
-------	-----	---------	----