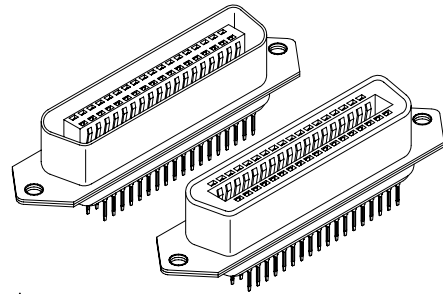
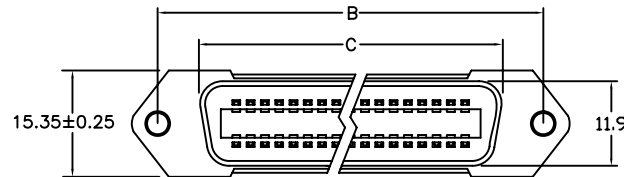
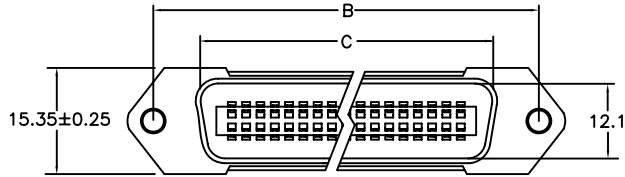


| | | | |
|------|---------------|---------|-------|
| REV. | SPECIFICATION | ECN NO. | APPD. |
| | | | |



10 Series

20 Series



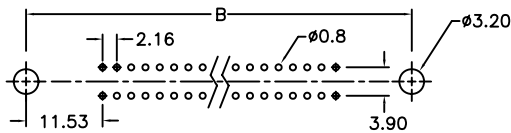
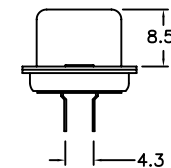
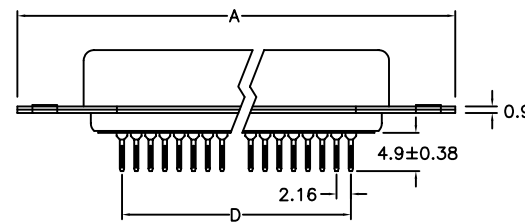
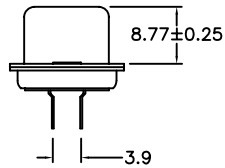
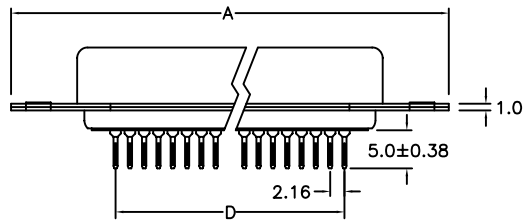
Material:

Housing: Thermoplastic Polyester Glass Filled UL94V-0.
 Contacts: Copper Alloy
 Shell: Metal

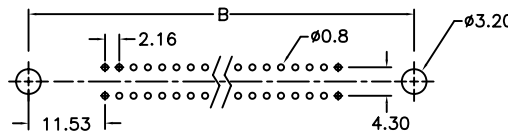
Electrical Characteristics:

Current Rating: 5 AMP.
 Dielectric Withstanding Voltage: AC 1000V For 1 minute.
 Insulator Resistance: 1000MΩ min. at DC 500V.
 Contact Resistance: 30mΩmax. at DC 100 m A.
 Operating Temperature: -55°C~+105°C.

***RoHS Compliant**



P.C. Board Layout



P.C. Board Layout

| | | | |
|--------------|------------------------|--|-----------------|
| 5972- | 10 | xx0 | A |
| Series | 10: Male 20: Female | 140: 14 Pin 240: 24 Pin 360: 36 Pin 500: 50 Pin | A: Tray Package |

| Position | A | B | C | | D |
|----------|------|------|-----------|-----------|-------|
| | | | 10 Series | 20 Series | |
| 14 | 43.9 | 36.0 | 25.6 | 25.2 | 12.96 |
| 24 | 54.7 | 46.8 | 36.3 | 36.0 | 23.76 |
| 36 | 67.7 | 59.7 | 49.3 | 48.9 | 36.72 |
| 50 | 82.8 | 74.9 | 64.4 | 64.1 | 51.84 |

| | | | | | |
|-------------------|-------------------|----------------|--------------|---|-----|
| Tolerances | Dwg. No. | 5972D03001 | | Title: | |
| x = ±0.50 | Projection | | | 5972 Series Centronic Connector Straight Type | |
| .x = ±0.25 | Unit | mm | Scale | | 1:1 |
| .xx = ±0.15 | Drawn By | Peggy 04/09'13 | | | |

| |
|-------------|
| Q522 |
|-------------|

| | | | |
|--------------------------------------|-----|----------------|----|
| OUPIIN | | | |
| OUPIIN ELECTRONIC(KUNSHAN) CO., LTD. | | | |
| P/N: 5972-10xx0A & 5972-20xx0A | | | |
| SHEET | 1/1 | Ver.No. | A6 |