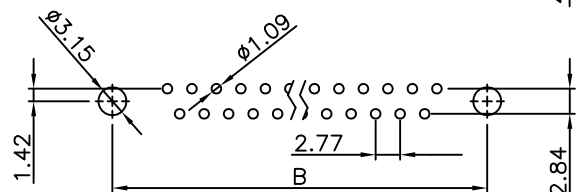
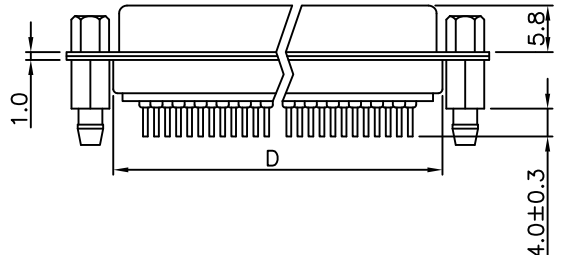
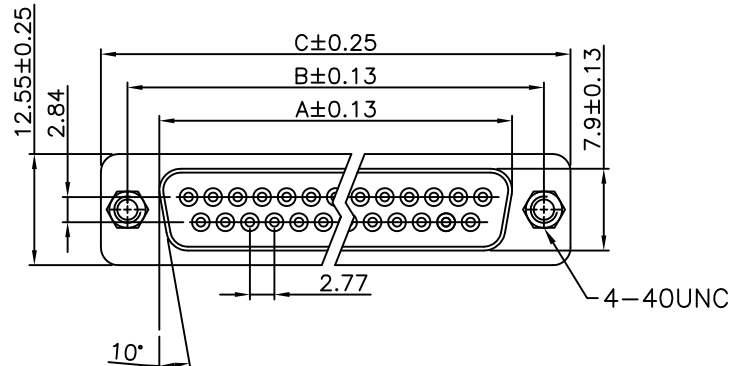
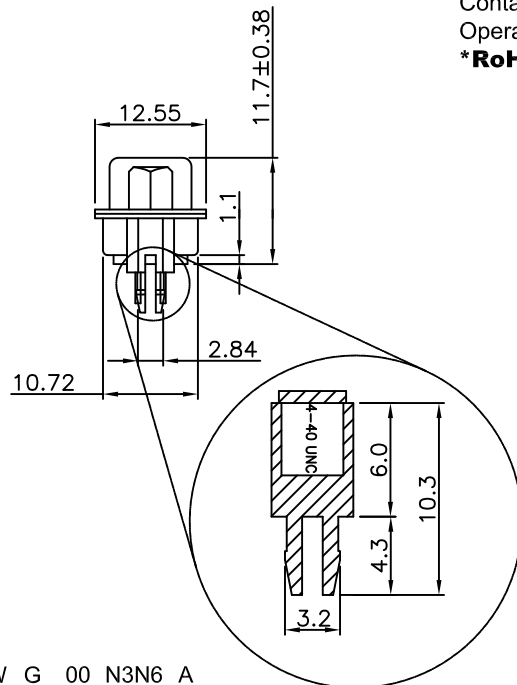


REV.	SPECIFICATION	ECN NO.	APPD.
A6			



P.C. Board Layout



Material:
Housing: PBT, UL94V-0.
Contacts: Brass, Gold Plated over Nickel 30 u" Min.
Shell: Steel.

Electrical Characteristics:
Current Rating: 1 AMP.
Dielectric Withstanding Voltage: AC 1000V For 1 minute.
Insulation Resistance: 1000MΩ min. at DC 500V.
Contact Resistance: 20mΩ max. at DC 100mA.
Operating Temperature: -55°C~+105°C.
***RoHS Compliant**

7905- xx F T W G 00 N3N6 A

Series —
Positions —
F: Female
B: Black
U: Blue
W: White
G: Gold Plated

A: Tray Package
N3N6: With 4-40UNC Thread Riveted Brackets And Jack Screws Assembled
00: G/F
10: 10 μ"
15: 15 μ"
30: 30 μ"

Position	Dimension			
	A	B	C	D
9	16.33	24.99	30.81	19.28
15	24.66	33.32	39.14	27.51
25	38.38	47.04	53.04	41.30
37	54.84	63.50	69.32	57.71

Tolerances	Dwg. No.	7905D02002	Title:	
x = ±0.5	Projection		7905 Series	
.x = ±0.25	Unit	mm	Scale	1:1
.xx = ±0.15	Drawn By	Lucas 12/01'17	D-SUB Straight Type	

① 767

OUPIN
OUPIN ELECTRONIC(KUNSHAN) CO., LTD.
P/N: 7905-xxFTWG00N3N6A

SHEET	1/1	Ver.No.	A9
--------------	-----	----------------	----