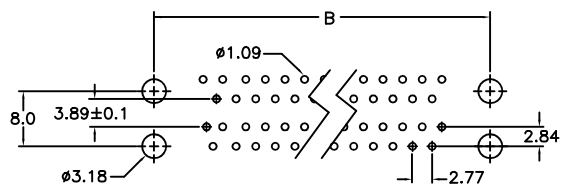
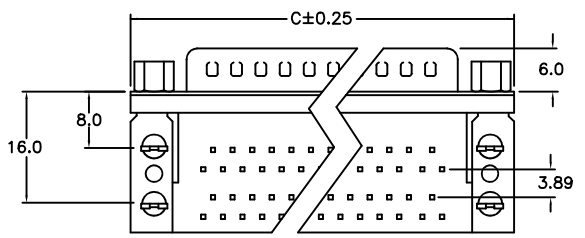
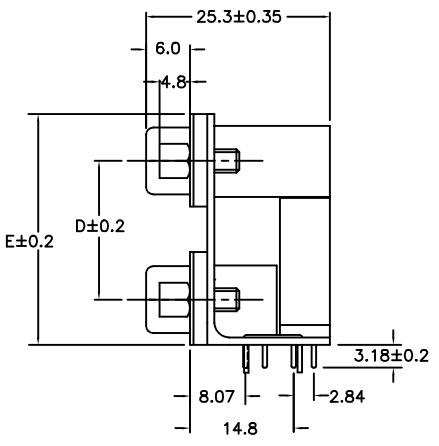
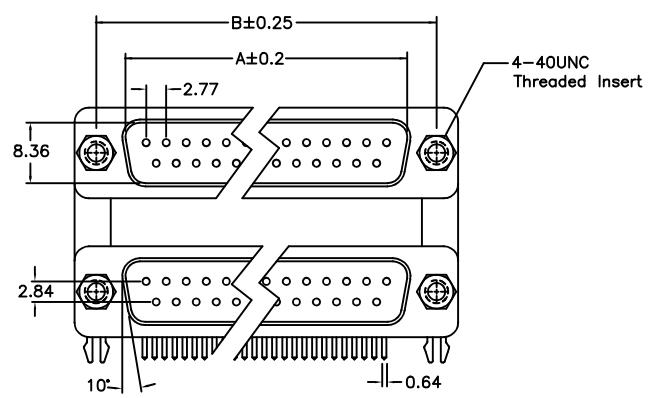


REV.	SPECIFICATION	ECN NO.	APPD.

Material:
Housing: PBT,UL94V-0,Black.
Contacts: Brass,Gold Plated over Nickel 30u".
Shell: Steel.

Electrical Characteristics:
Current Rating: 1 AMP.
Dielectric Withstanding Voltage: AC 1000V.
Insulator Resistance: 1000M Ω min.
Contact Resistance: 30m Ω max.
Operating Temperature: -20°C~+70°C.

***RoHS Compliant**



P.C. Board Layout

7936- xx M M Y x A

Series ————
No. of Positions ————
M: Male Top ————
M: Male Bottom ————
Y: Grounding Fork,
Jack Screw Attached ————
A: Tray Package ————

1: 15.88 See Dim:D
2: 19.05 See Dim:D

Positions	A	B	C	D	E		
9	16.92	24.99	30.81	15.88	19.05	28.43	31.60
15	25.25	33.32	39.14	15.88	19.05	28.43	31.60
25	38.96	47.04	53.04	15.88	19.05	28.43	31.60

Tolerances .x = ±0.50 .xx = ±0.25 .xxx = ±0.15	Dwg No.	7936D01037	Title: 7936 Series D-SUB Double Port Right Angle Type	 OUPIIN ELECTRONIC(KUNSHAN) CO., LTD. P/N: 7936-xxMMYxA			
	Projection						
	Unit	mm		Scale	1:1	Drawn By	Martin 09/28'22