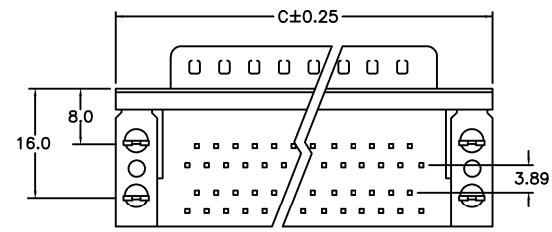
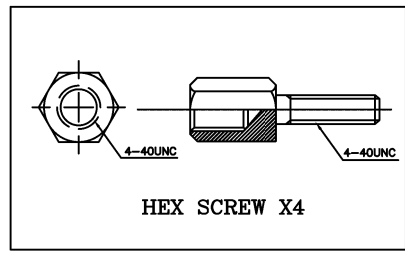
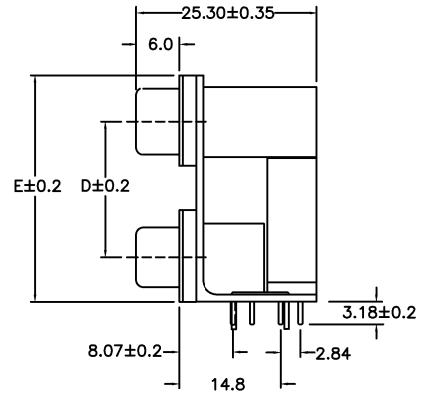
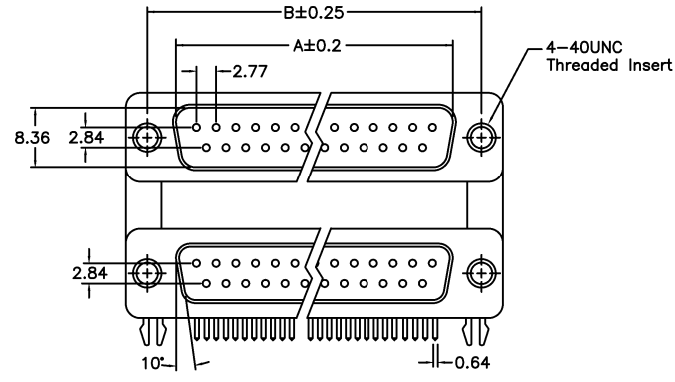


REV.	SPECIFICATION	ECN NO.	APPD.

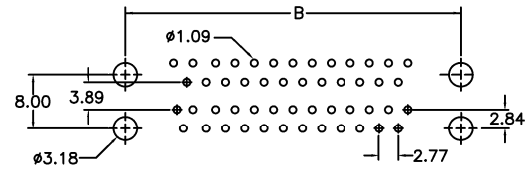
Material:
Housing: PBT, UL94V-0, Black.
Contacts: Brass, Gold Plated over 30u" Nickel Plated.
Shell: Steel.

Electrical Characteristics:
Current Rating: 1 AMP.
Dielectric Withstanding Voltage: AC 1000V.
Insulator Resistance: 1000M Ω min.
Contact Resistance: 30m Ω max.
Operating Temperature: -20°C~+70°C.

***RoHS Compliant**



7936- xx M M H x A
Series Position M: Male M: Male H: Grounding Fork, Jack Screw Separately x: 1: 15.88 See Dim: D 2: 19.05 See Dim: D A: Tray Package



P.C. Board Layout

Position	Dimension						
	A	B	C	D		E	
9	16.92	24.99	30.81	15.88	19.05	28.43	31.60
15	25.25	33.32	39.14	15.88	19.05	28.43	31.60
25	38.96	47.04	53.04	15.88	19.05	28.43	31.60

Tolerances	Dwg. No.	7936D01034
x = ±0.50	Projection	
.x = ±0.25	Unit	mm
.xx = ±0.15	Scale	1:1
	Drawn By	Martin 09/28'22

Title:
7936 Series
D-SUB Double Port
Right Angle Type

OUPIIN
OUPIIN ELECTRONIC(KUNSHAN) CO., LTD.
P/N: 7936-xxMMHxA

SHEET	1/1	Ver.No.	A9
-------	-----	---------	----

512