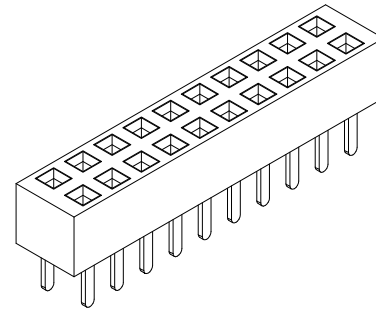
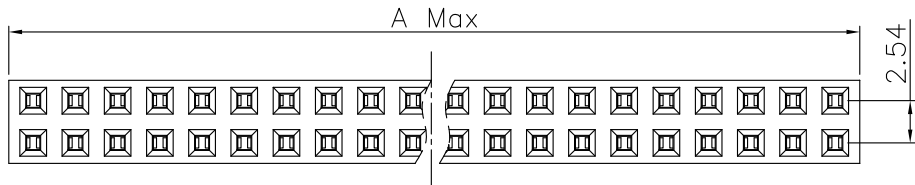


|      |               |           |       |
|------|---------------|-----------|-------|
| REV. | SPECIFICATION | ECN NO.   | APPD. |
| R2   |               | ECN120405 |       |



**Material:**

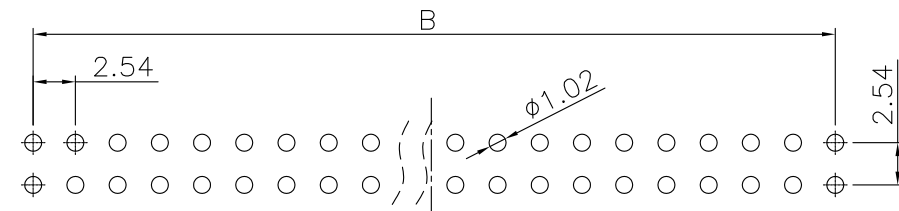
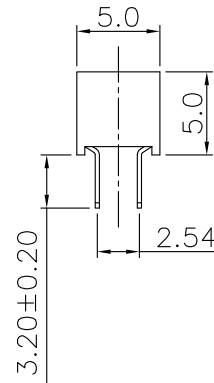
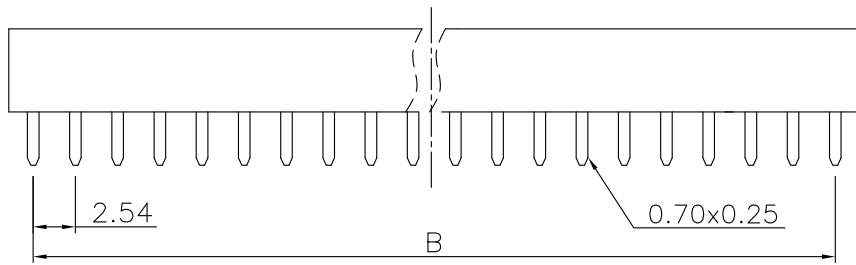
Housing: Thermoplastic Polyester Glass Filled UL94V-0.  
Contacts: Copper Alloy.

**Electrical Characteristics:**

Current Rating: 2 AMP.  
Dielectric Withstanding Voltage: AC 1000V For 1 Minute.  
Insulator Resistance: 1000MΩ min. at DC 500V.  
Contact Resistance: 20mΩ max. at DC 100mA.  
Operating Temperature: -55°C~+105°C .

**\*RoHS Compliant**

Insertion Depth: 2.55mm to 4.50mm.



P.C. Board Layout  
(Tolerance: ±0.05mm)

2041- 2 X xx G xx S A  
 Series | Double Row | No. of Pin Per Row | G: Gold Plated | T: Tin Plated  
 A: Tray Package  
 B: Bulk Package  
 S: Straight  
 00: G/F  
 10: 10 μ"  
 15: 15 μ"  
 30: 30 μ"

|           |                                |
|-----------|--------------------------------|
| Position  | 4 Thru 80                      |
| Dimension |                                |
| A         | 2.54 X No. of Position/2       |
| B         | 2.54 X No. of Position/2 -2.54 |

|             |            |                |
|-------------|------------|----------------|
| Tolerances  | Dwg. No.   | 2041-D0000-002 |
| x = ±0.5    | Projection |                |
| .x = ±0.25  | Unit       | mm             |
| .xx = ±0.15 | Scale      | 1:1            |
|             | Drawn By   | ZJJ 04/05'12   |

Title: 2041 Series  
P.C.B. Socket  
2.54mmX2.54mm  
(0.100"X0.100")

|                                      |     |         |    |
|--------------------------------------|-----|---------|----|
|                                      |     |         |    |
| OUPIIN ELECTRONIC(KUNSHAN) CO., LTD. |     |         |    |
| P/N: 2041-2XxxGxxSA                  |     |         |    |
| SHEET                                | 1/1 | Ver.No. | R2 |