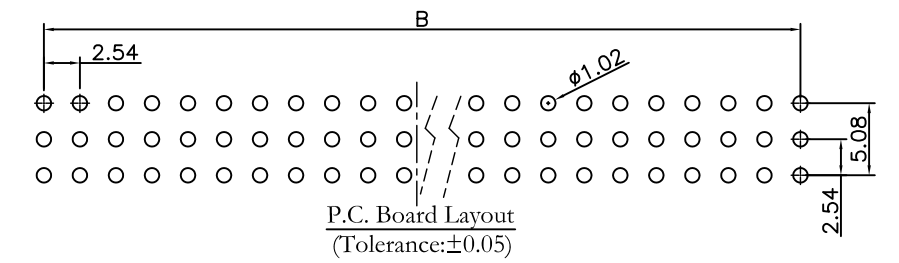
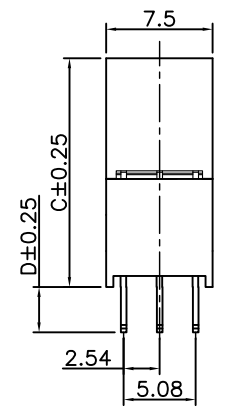
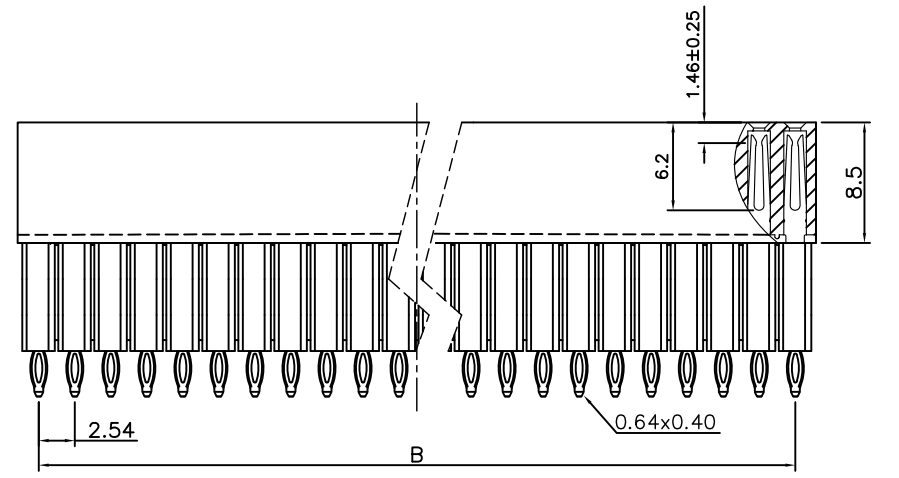
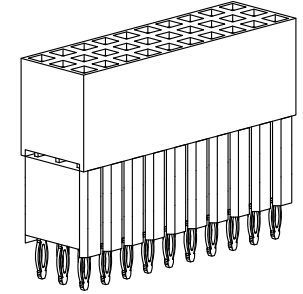
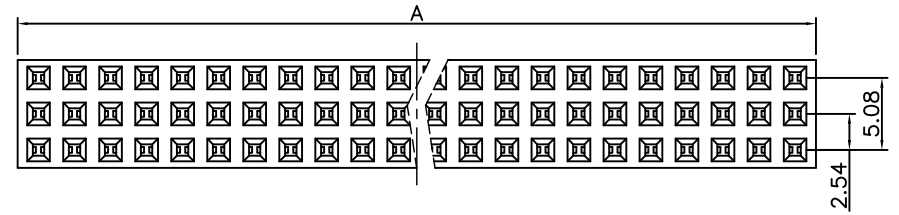


REV.	SPECIFICATION	ECN NO.	APPD.
R8		ECN201004	

**Material and Plating:**  
Housing: PBT, UL94V-0, BLACK  
Cover: PBT, UL94V-0, BLACK  
Contacts: Brass.  
Gold Plated on Contact Area and Gold Flash on Press Fit over Nickel 50u" Min.  
Or Tin 80u" Min Plated over Nickel 50u" Min.

**Electrical Characteristics:**  
Current Rating: 2 AMP.  
Dielectric Withstanding Voltage: AC 1000V For 1 minute.  
Insulator Resistance: 1000MΩmin. at DC 500V.  
Contact Resistance: 20mΩmax. at DC 100mA.  
Operating Temperature: -55°C ~ +105°C.

**\*RoHS Compliant**  
Insertion Depth: 2.55mm to 5.70mm.



2047- 3 X xx G xx S P x U  
Series: 2047- Triple Row  
No. of Pin Per Row: 3  
X: Choices of Code 1~5  
xx: G: Gold Plated, T: Tin Plated  
G: Gold Plated  
xx: Choices of Code 1~5  
S: Straight  
P: Press Fit Type  
U: Tube Package  
00: G/F  
10: 10u"  
15: 15u"  
30: 30u"

Position	6 Thru 120				
Dimension	2.54 X No. of Positions/3 +0.4				
A	2.54 X No. of Positions/3 -2.54				
B					
C	1	2	3	4	5
(Code)	11.05	13.59	16.13	18.67	11.05
D	3.20	3.20	3.20	3.20	12.20

<b>Tolerances</b>	<b>Dwg. No.</b>	2047-D0000-005	
x = ±0.5	<b>Projection</b>	⊕ ◀	
.x = ±0.25	<b>Unit</b>	mm	<b>Scale</b> 1:1
.xx = ±0.15	<b>Drawn By</b>	WQ 10/8'20	

**Title:**  
2047 Series  
Elevated P.C.B. Socket  
2.54mmX2.54mm(0.100"X0.100")

**OUPIN**  
**OUPIN ELECTRONIC(KUNSHAN) CO., LTD.**  
**P/N: 2047-3XxxGxxSPxU**

<b>SHEET</b>	1/1	<b>Ver.No.</b>	R8
--------------	-----	----------------	----