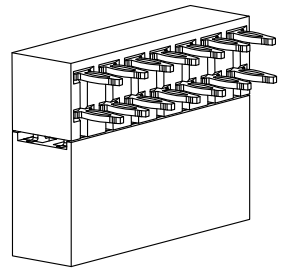
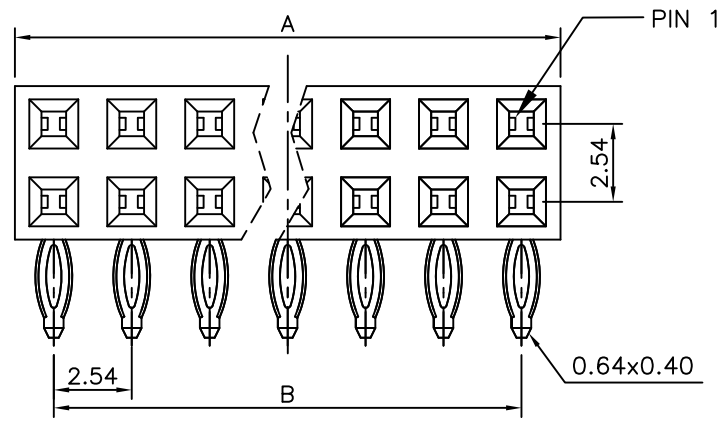


REV.	SPECIFICATION	ECN NO.	APPD.
R5		ECN160328	



Material:

Housing: Thermoplastic Polyester Glass Filled UL94V-0

Contacts: Copper Alloy

Electrical Characteristics:

Current Rating: 2 AMP.

Dielectric Withstanding Voltage: AC 1000V for 1 minute.

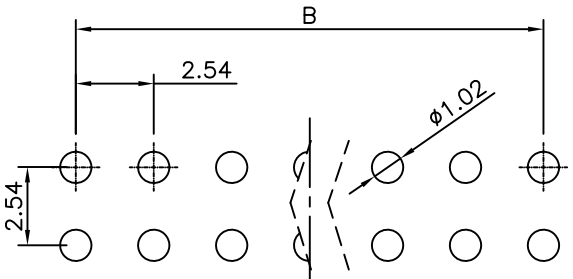
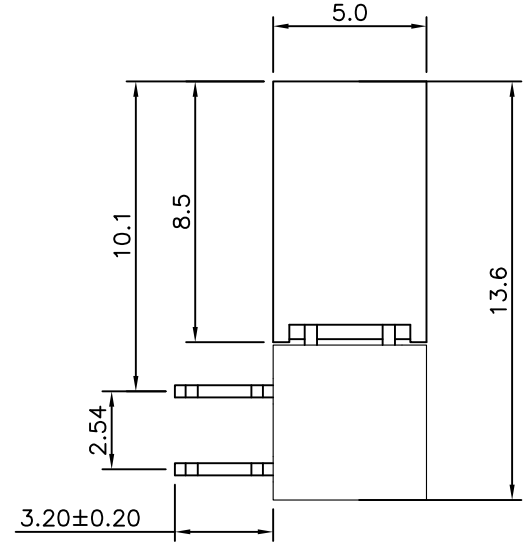
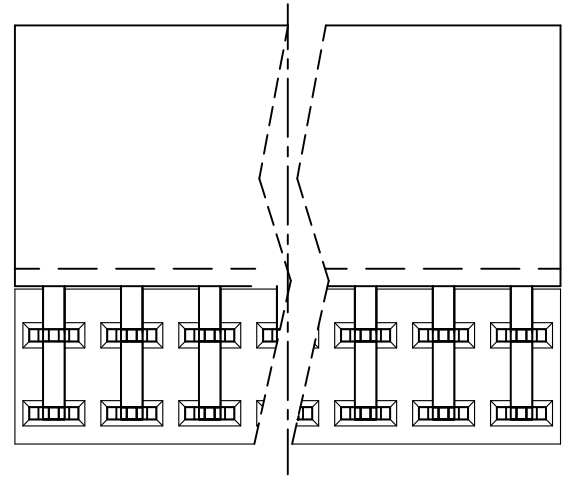
Insulator Resistance: 1000MΩ min. at DC 500V.

Contact Resistance: 20mΩ max. at DC 100mA.

Operating Temperature: -55°C~+105°C .

***RoHS Compliant**

Insertion Depth: 2.55mm to 6.20mm.



P.C. Board Layout
(Tolerance:±0.05)

Series: 2044- 2 X xx G xx R P A
 Double Row: 2
 No. of Pin Per Row: xx
 G: Gold Plated
 T: Tin Plated
 A: Tray Package
 B: Bulk Package
 P: Press Fit
 R: Right Angle
 00: G/F
 10: 10μ
 15: 15μ
 30: 30μ

Position	4 Thru 80
Dimension	
A	2.54 X No. of Position /2 +0.4
B	2.54 X No. of Position /2 -2.54

Tolerances	Dwg. No.	2044-D0000-004	Title:
x = ±0.5	Projection		2044 Series
.x = ±0.25	Unit	mm	P.C.B. Socket
.xx = ±0.15	Scale	1:1	2.54mmX2.54mm(0.100"X0.100")
	Drawn By	ycj 03/15'16	

OUPIN
OUPIN ELECTRONIC(KUNSHAN) CO., LTD.
 P/N: 2044-2XxxGxxRPA
 SHEET 1/1 Ver. No. R5