

REV.	SPECIFICATION	ECN NO.	APPD.
R7		ECN201004	

**Material and Plating:**

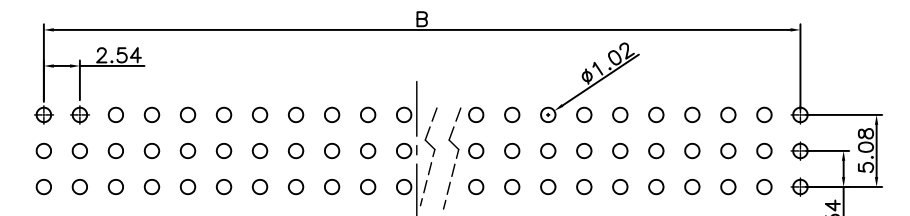
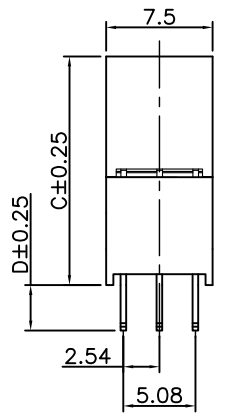
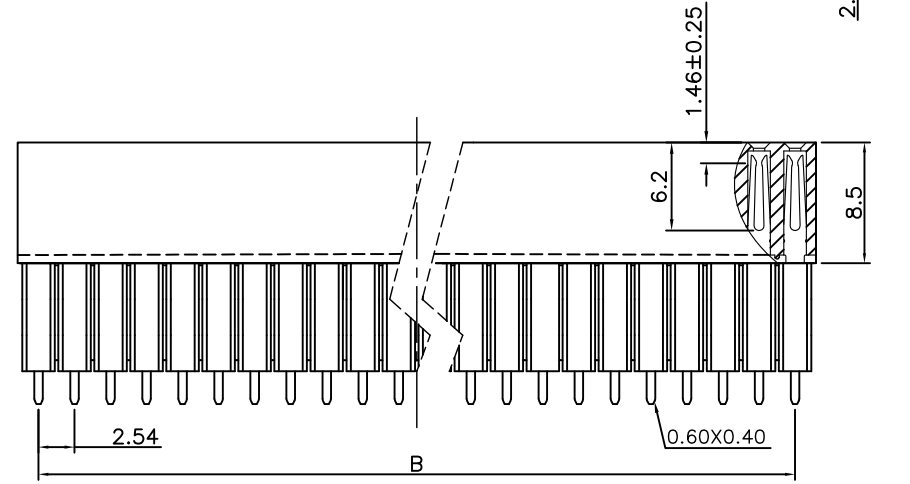
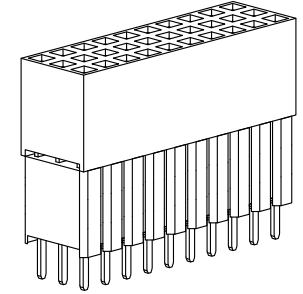
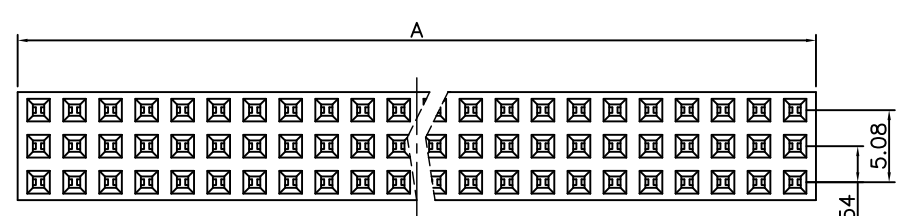
Housing: PBT, UL94V-0, BLACK  
 Cover: PBT, UL94V-0, BLACK  
 Contacts: Brass.  
 Gold Plated on Contact Area and Gold Flash on solder tail over Nickel 50u" Min.  
 Or Tin 80u" Min Plated over Nickel 50u" Min.

**Electrical Characteristics:**

Current Rating: 2 AMP.  
 Dielectric Withstanding Voltage: AC 1000V For 1 minute.  
 Insulator Resistance: 1000MΩmin. at DC 500V.  
 Contact Resistance: 20mΩmax. at DC 100mA.  
 Operating Temperature: -55°C ~ +105°C.

**\*RoHS Compliant**

Insertion Depth: 2.55mm to 5.70mm.



P.C. Board Layout  
(Tolerance: ±0.05)

2047- 3 X xx G xx S x U  
 Series Triple Row No. of Pin Per Row G: Gold Plated T: Tin Plated  
 U: Tube Package Choices of Code 1~11  
 S: Straight  
 00: G/F  
 10: 10u"  
 15: 15u"  
 30: 30u"

Position Dimension	6 Thru 120										
A	2.54 X No. of Positions/3 +0.4										
B	2.54 X No. of Positions/3 -2.54										
C (Code)	1	2	3	4	5	6	7	8	9	10	11
	11.05	11.05	13.59	16.13	11.05	13.59	16.13	18.67	11.05	18.67	21.21
D	2.50	7.35	4.85	2.30	12.20	9.65	7.10	4.60	3.50	3.00	2.06

Tolerances	Dwg. No.	2047-D0000-006	
x = ±0.5	Projection	⊕ ◁	
.x = ±0.25	Unit	mm	Scale 1:1
.xx = ±0.15	Drawn By	WQ 10/8'20	

Title:  
 2047 Series  
 Elevated P.C.B. Socket  
 2.54mmX2.54mm(0.100"X0.100")

**OUPIN**  
 OUPIN ELECTRONIC(KUNSHAN) CO., LTD.  
 P/N: 2047-3XxxGxxSxU  
 SHEET 1/1 Ver.No. R7