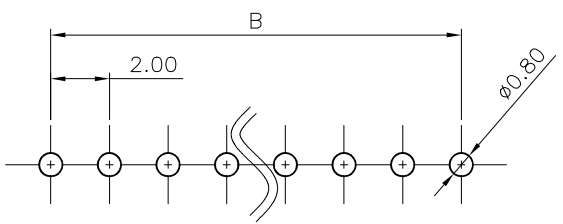
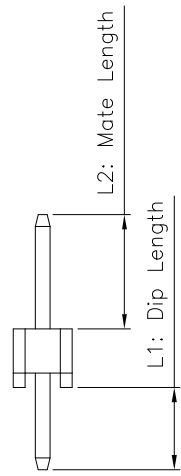
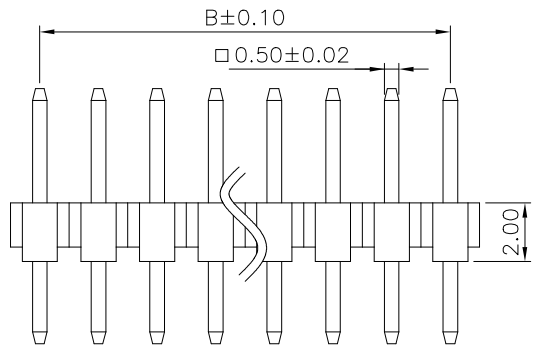
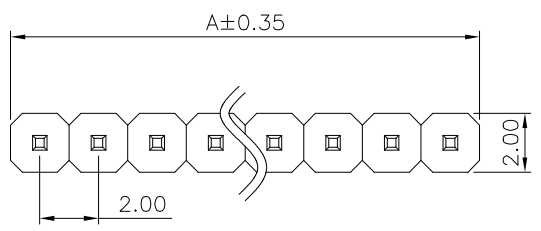


REV.	SPECIFICATION	ECN NO.	APPD.



P.C.Board Layout

**Material:**  
Housing: PA6T, UL94V-0, Black.  
Contacts: Brass, Gold Plated over Nickel 50u".  
**Electrical Characteristics:**  
Current Rating: 3 AMP.  
Dielectric Withstanding Voltage: AC 500V.  
Insulator Resistance: 1000MΩ min.  
Contact Resistance: 20mΩ max.  
Operating Temperature: -40°C~+105°C .  
**\*RoHS Compliant**

Dimension					
Positions	A	B	Positions	A	B
02	3.75	2.00	22	43.75	42.00
03	5.75	4.00	23	45.75	44.00
04	7.75	6.00	24	47.75	46.00
05	9.75	8.00	25	49.75	48.00
06	11.75	10.00	26	51.75	50.00
07	13.75	12.00	27	53.75	52.00
08	15.75	14.00	28	55.75	54.00
09	17.75	16.00	29	57.75	56.00
10	19.75	18.00	30	59.75	58.00
11	21.75	20.00	31	61.75	60.00
12	23.75	22.00	32	63.75	62.00
13	25.75	24.00	33	65.75	64.00
14	27.75	26.00	34	67.75	66.00
15	29.75	28.00	35	69.75	68.00
16	31.75	30.00	36	71.75	70.00
17	33.75	32.00	37	73.75	72.00
18	35.75	34.00	38	75.75	74.00
19	37.75	36.00	39	77.75	76.00
20	39.75	38.00	40	80.00	78.00
21	41.75	40.00			

2112- 1 X xx G 00 S B -HT  
Series: 2112-  
Single Row: 1  
No.of Pin Per Row: xx  
G: Gold Plated  
00: Gold Flash  
10: 10 u"  
15: 15 u"  
30: 30 u"  
S: Straight  
B: Bulk Package  
HT: High Temperature Plastic

Standard item:  
ic: 2112-1XxxG00SB-HT(Total Length 8.7mm, Dip 2.8mm, Mate 3.9mm)  
Custom item:  
ic: 2112-1X40G00S-2.3-3.9B-HT(2112-1XxxG00S-L1-L2B-HT)  
2.3: Dip Length (increment of 0.1mm)  
3.9: Mate Length (increment of 0.1mm)

Tolerances	Dwg No.	2112D01008	
.x = ±0.30 .xx = ±0.20	Projection		
	Unit	mm	Scale 1:1
	Drawn By	Martin 05/09'23	

Title: 2112 Series  
Pin Header 2.0mm  
Single Row High Temp  
Straight Solder Type

**OUPIN**  
OUPIN ELECTRONIC(KUNSHAN) CO., LTD.  
P/N: 2112-1XxxG00SB-HT

SHEET	1/1	Ver.No.	A6
-------	-----	---------	----