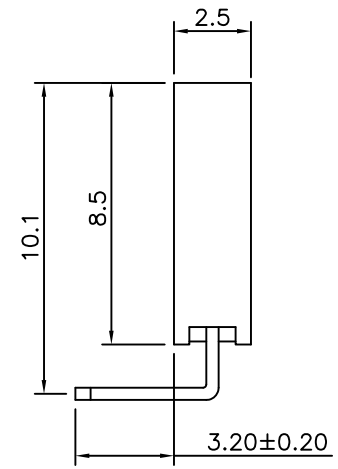
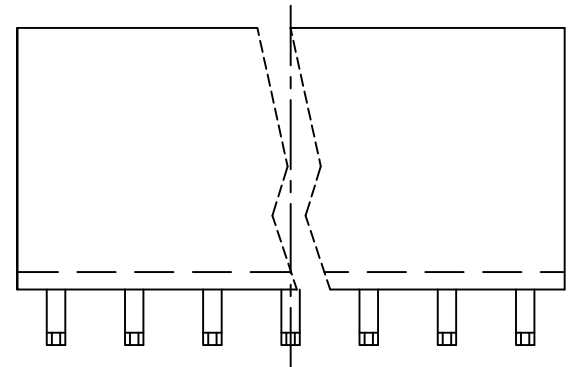
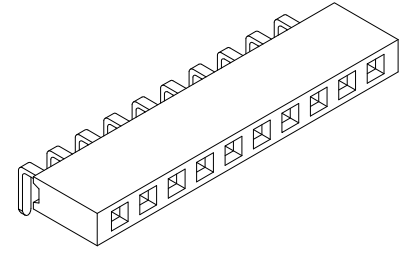
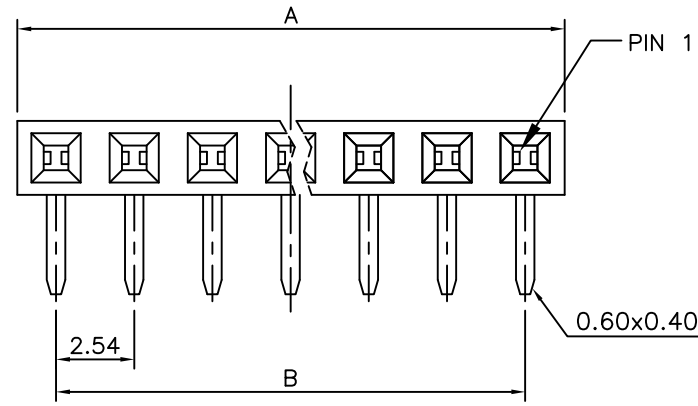


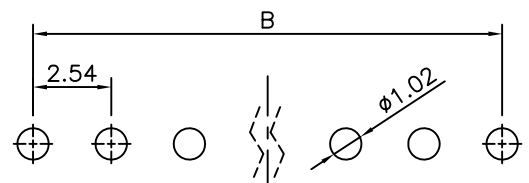
REV.	SPECIFICATION	ECN NO.	APPD.
R5		ECN160328	



Material:
Housing: Thermoplastic Polyester Glass Filled UL94V-0
Contacts: Copper Alloy

Electrical Characteristics:
Current Rating: 2 AMP.
Dielectric Withstanding Voltage: AC 1000V for 1 minute.
Insulator Resistance: 1000MΩ min. at DC 500V.
Contact Resistance: 20mΩ max. at DC 100mA.
Operating Temperature: -55°C~+105°C .

***RoHS Compliant**
Insertion Depth: 2.55mm to 6.20mm.



P.C. Board Layout
(Tolerance:±0.05)

2044- 1 X xx G xx R A

Series: 2044-
Single Row: 1
No. of Pin Per Row: X
G: Gold Plated
T: Tin Plated

xx: 00: G/F
10: 10μ"
15: 15μ"
30: 30μ"

A: Tray Package
B: Bulk Package
R: Right Angle

Position	2 Thru 40
Dimension	
A	2.54 X No. of Position +0.4
B	2.54 X No. of Position -2.54

Tolerances	Dwg. No.	2044-D0000-002	
x = ±0.5	Projection		
.x = ±0.25	Unit	mm	Scale 1:1
.xx = ±0.15	Drawn By	ycj03/15'16	

Title:
2044 Series
P.C.B. Socket 2.54mm(0.100")

OUPIN			
OUPIN ELECTRONIC(KUNSHAN) CO., LTD.			
P/N:		2044-1XxxGxxRA	
SHEET	1/1	Ver. No.	R5