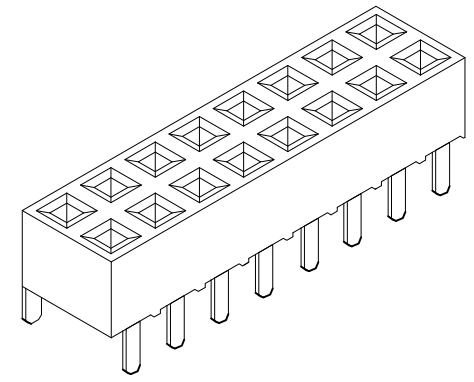
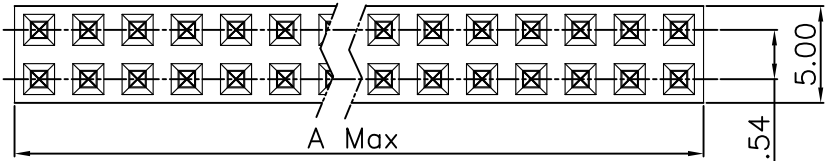


REV.	SPECIFICATION	ECN NO.	APPD.
R4		ECN220926	



**Material and Plating:**

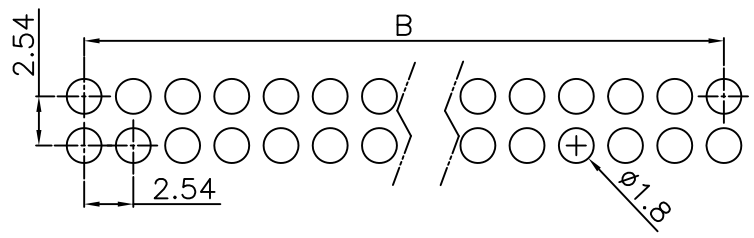
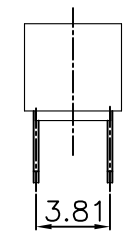
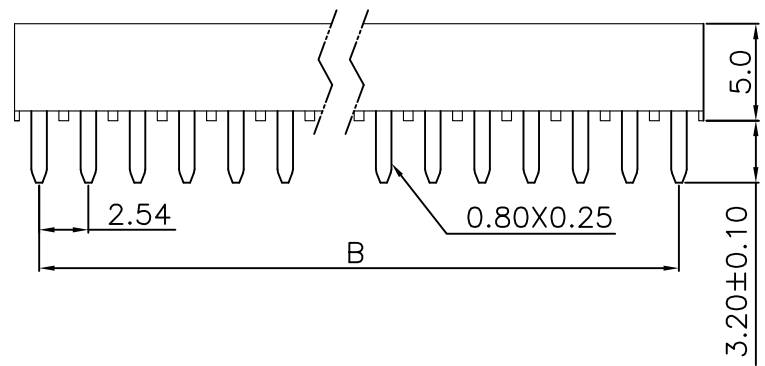
Housing: PBT,UL94V-0,Black.  
 Contacts: Phosphor Bronze.  
 Gold Plated or 80u" Min Tin Plated on Contact Area and Gold Flash or 80u" Min Tin Plated on solid tail over Nickel 50u"Min.

**Electrical Characteristics:**

Current Rating: 2 AMP.  
 Dielectric Withstanding Voltage: AC 1000V For 1 minute.  
 Insulator Resistance: 1000MΩ min. at DC 500V.  
 Contact Resistance: 20mΩ max. at DC 100mA.  
 Operating Temperature: -55°C~+105°C .

**\*RoHS Compliant**


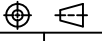
Insertion Depth: 2.55mm to 4.50mm.



P.C. Board Layout  
 (Tolerance: ±0.05mm)

2048- 2 X xx G xx C U  
 Series ———  
 Double Row ———  
 No. of Pin Per Row ———  
 G: Gold Plated ———  
 T: Tin Plated ———  
 U: Tube Package  
 C: 2.54mm X 3.81mm  
 00: G/F  
 10: 10 μ"  
 15: 15 μ"  
 30: 30 μ"

Position	4 Thru 80
Dimension	
A	2.54 X No. of Positions/2
B	2.54 X No. of Positions/2 -2.54

Tolerances	Dwg. No.	2048-D0000-003	Title:		2048 Series	 <b>OUPIIN ELECTRONIC(KUNSHAN) CO., LTD.</b>
x = ±0.5	Projection		2.54mmX2.54mm(0.100"X0.100")		P.C.B. Socket	
.x = ±0.25	Unit	mm	Scale	1:1		P/N: 2048-2XxxGxxCU
.xx = ±0.15	Drawn By	ZY 09/16'22				SHEET 1/1 Ver. No. R4