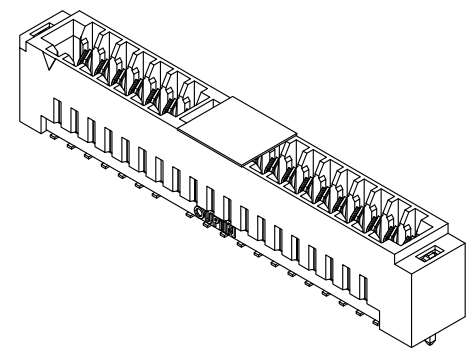
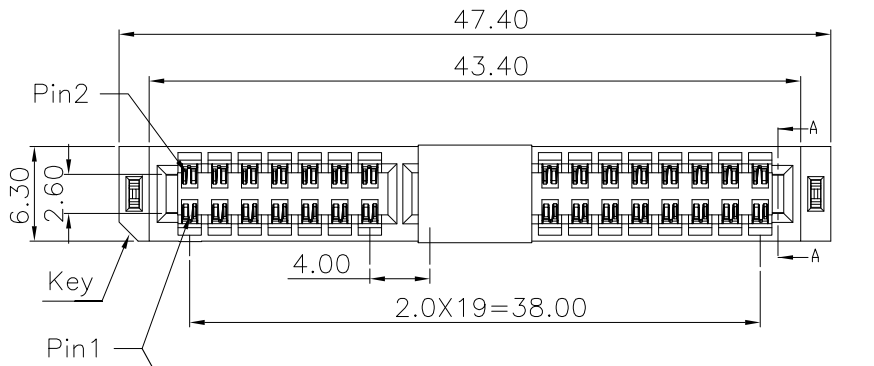
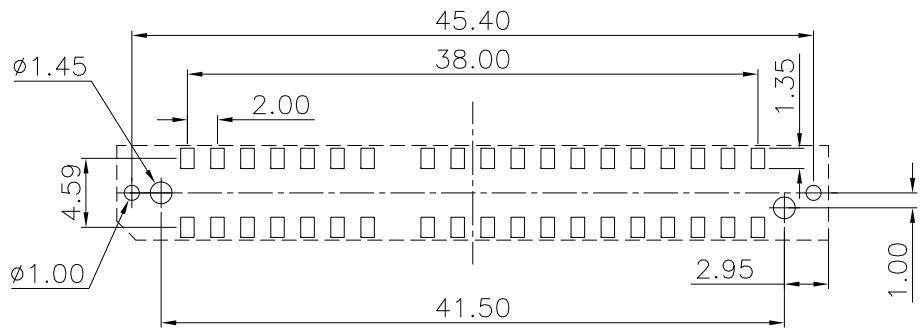
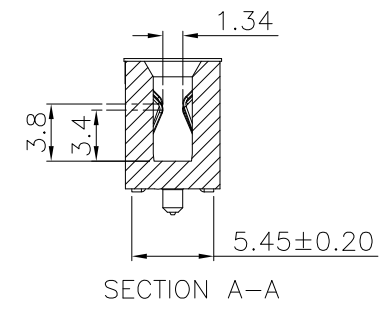
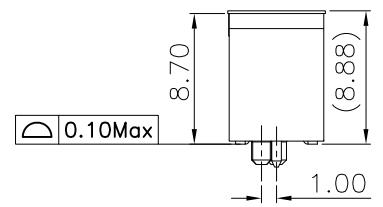
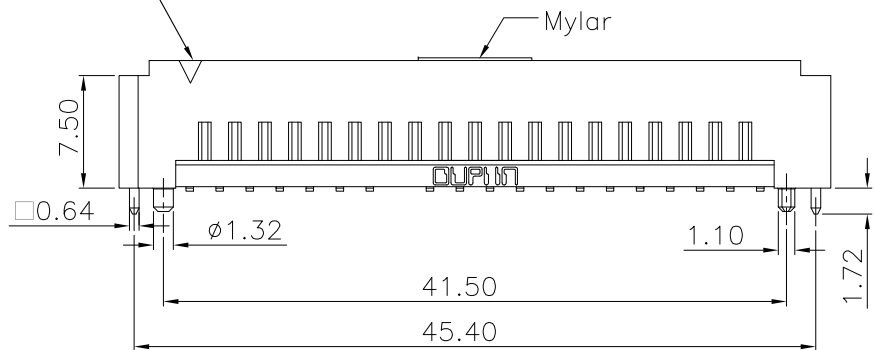


1 2 3 4 5 6 7 8 9 10 11 12

REV.	SPECIFICATION	ECN NO.	APPD.
R5		ECN2401--	



Materials and Plating:
Housing: LCP, UL94V-0, Beige.
Contacts: High Performance Copper Alloy
 Gold Plated on Contact Area and 80u" Min Matte Tin Plated on solder tail over Nickel 50u"Min.
Lock: Barss
 80u" Min Matte Tin Plated on solder tail over Nickel 50u"Min.
Electrical Characteristics:
Current Rating: 2.5 AMP.
Dielectric Withstanding Voltage: AC 500V For 1 minute.
Insulator Resistance: 5000MΩ min. at DC 500V.
Contact Resistance: 5.8mΩ max. at DC 100mA.
Operating Temperature: -55°C~+125°C.
***Data Rate: 28Gbps NRZ. / 56Gbps PAM4.**
***RoHS Compliant**
Mates With: 2.36±0.05mm Thick Edge Card.



P.C. Board Layout
(Tolerance ±0.05)

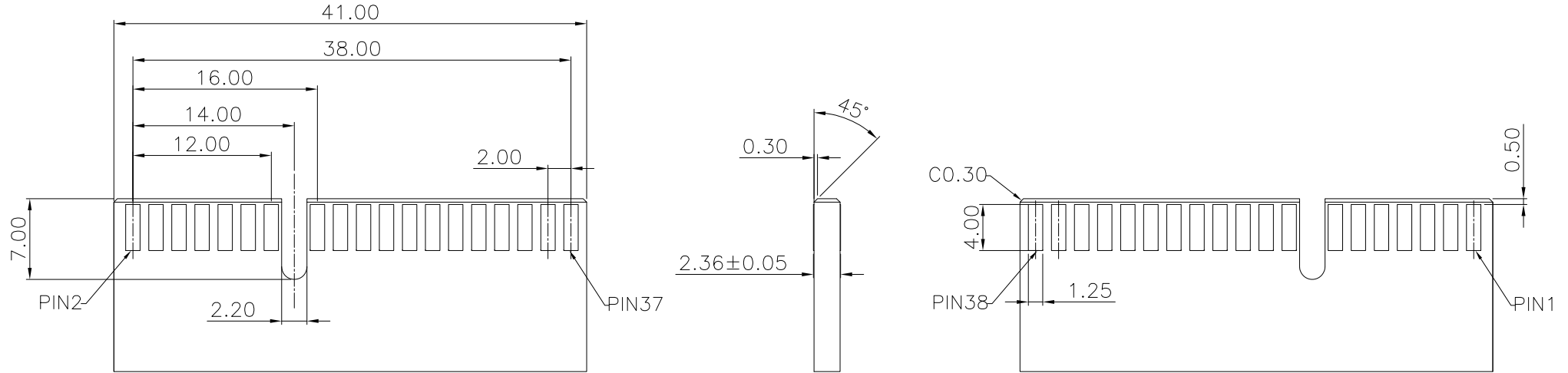
8216- 2 X 20 C 30 D P T - S

Series ———
 Double Row ———
 Position Per Row ———
 C: Selective Gold Plated ———
 10: 10μ"
 15: 15μ"
 30: 30μ"
 S: Mylar
 P: Plastic Pad
 Blank: Without Pad
 T: Tape&Reel Packaging
 U: Tube Packaging
 P: With Post
 N: Without Post
 D: SMD Type

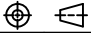
Tolerances	Dwg. No.	8216-D0000-001	Title:		OUPIN OUPIN ELECTRONIC(KUNSHAN) CO., LTD. P/N: 8216-2X20C30DPT-S
x = ±0.50	Projection		8216 Series Edge Card Connector 2.0mm (0.0787") Pitch SMD Type		
.x = ±0.25	Unit	mm	Scale	1:1	
.xx = ±0.15	Drawn By	GYJ	01/18'24		
					SHEET
					1/2
					Ver.No.
					R5

1 2 3 4 5 6 7 8 9 10 11 12

REV.	SPECIFICATION	ECN NO.	APPD.
R5		ECN2401--	



Recommended Card Layout
(Tolerance ±0.05)

Tolerances x = ±0.50 .x = ±0.25 .xx = ±0.15	Dwg. No.	8216-D0000-001		Title: 8216 Series Edge Card Connector 2.0mm (0.0787") Pitch SMD Type	OUPIN			
	Projection				OUPIN ELECTRONIC(KUNSHAN) CO., LTD.			
	Unit	<i>mm</i>	Scale		1:1	P/N: 8216-2X20C30DPT-S		
	Drawn By	GYJ 01/18'24			SHEET	2/2	Ver.No.	R5