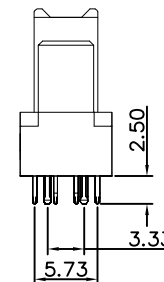
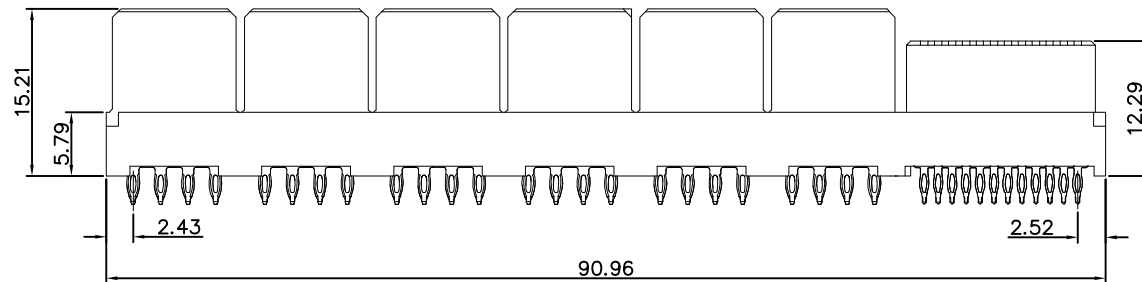
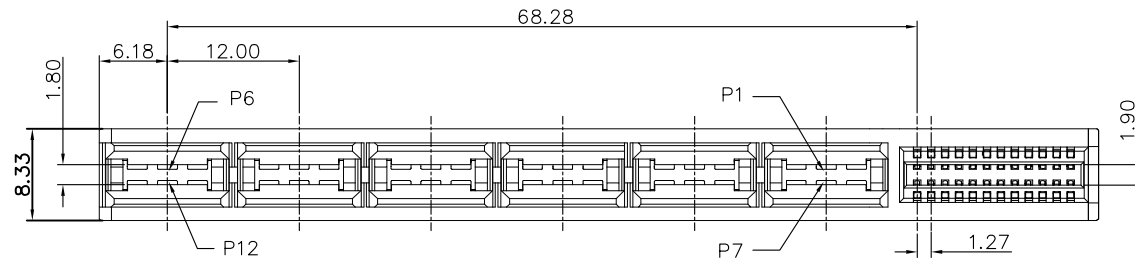


REV.	SPECIFICATION	ECN NO.	APPD.
X1			



Material:

Housing: High Temperature Plastic UL94V-0.

Contacts: Copper Alloy

Electrical Characteristics:

Current Rating: Signal Pin 1.0 AMP.

Power Pin 30 AMP.

Dielectric Withstanding Voltage:

Signal Pin DC 1500V For 1 minute.

Power Pin DC 1500V For 1 minute.

Contact Resistance: Signal Pin 20mΩ max. at DC 20mA.

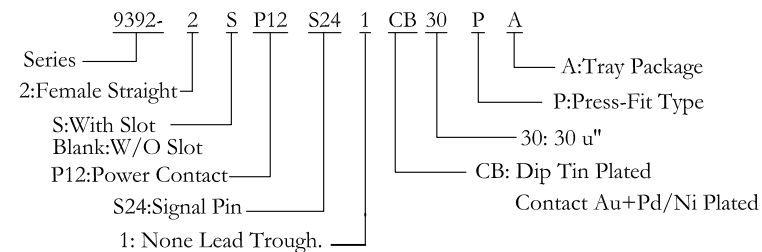
Power Pin 20mΩ max. at DC 20mA.

Operating Temperature: -40°C ~+105°C .

***RoHS Compliant**

Note:

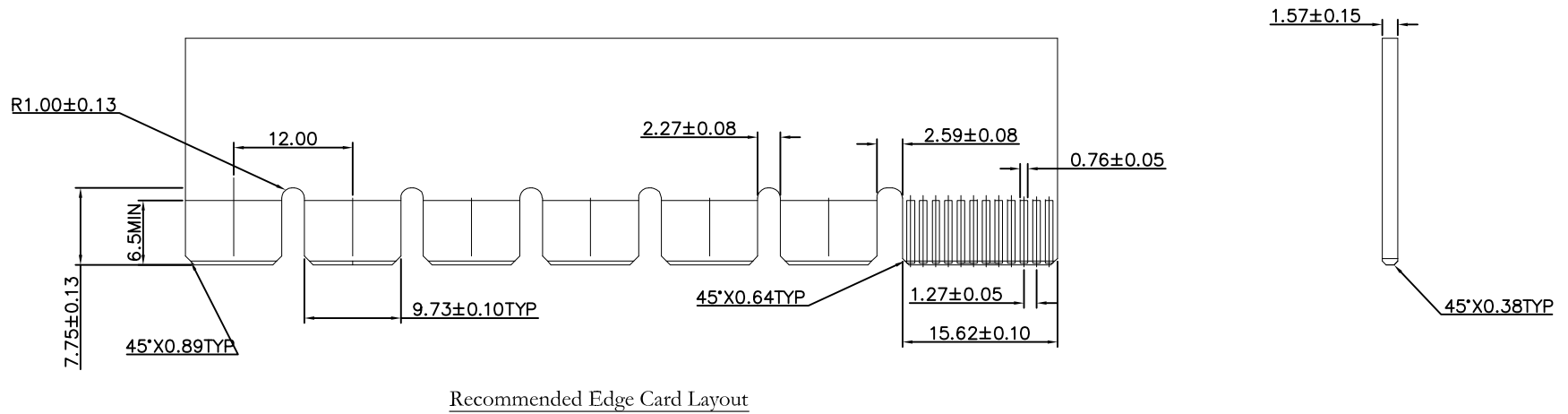
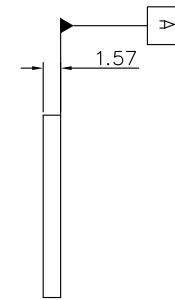
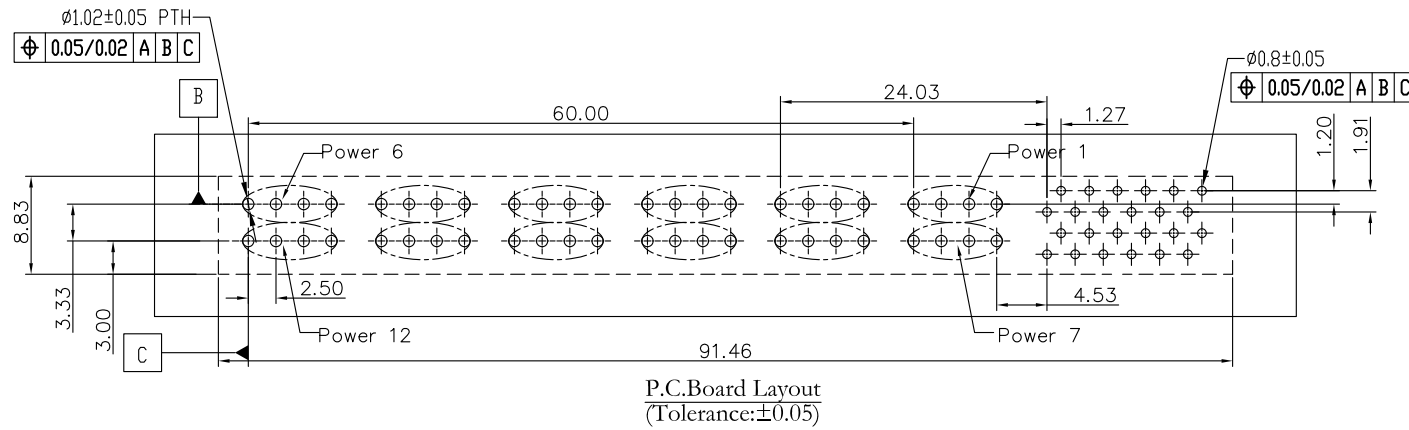
Mate with: Edge Card Thickness 1.57mm.



Tolerances	Dwg. No.	9392-D0000-009		Title:	
x = ±0.5	Projection	⊕ ⊖		9392 Series Low Profile Hybrid Power Receptacle	
.x = ±0.25	Unit	mm	Scale		1:1
.xx = ±0.15	Drawn By	WP	07/22'15		Ⓜ

OUPIN			
OUPIN ELECTRONIC(KUNSHAN) CO., LTD.			
P/N: 9392-2SP12S241CB30PA			
SHEET	1/2	Ver. No.	X1

REV.	SPECIFICATION	ECN NO.	APPD.
X1			



Tolerances	Dwg. No.	9392-D0000-009	Title:
x = ±0.5	Projection		9392 Series Low Profile Hybrid Power Receptacle
.x = ±0.25	Unit	mm	
.xx = ±0.15	Scale	1:1	
	Drawn By	WP 07/22'15	

SHEET	2/2	Ver. No.	X1
-------	-----	----------	----

OUPIN			
OUPIN ELECTRONIC(KUNSHAN) CO., LTD.			
P/N: 9392-2SP12S241CB30PA			
SHEET	2/2	Ver. No.	X1