

REV.	SPECIFICATION	ECN NO.	APPD.

Material:

Housing: PA66, UL94V-0.
 Contacts: Brass, 80~100u" Min Tin Plated over Nickel 25u" Min.

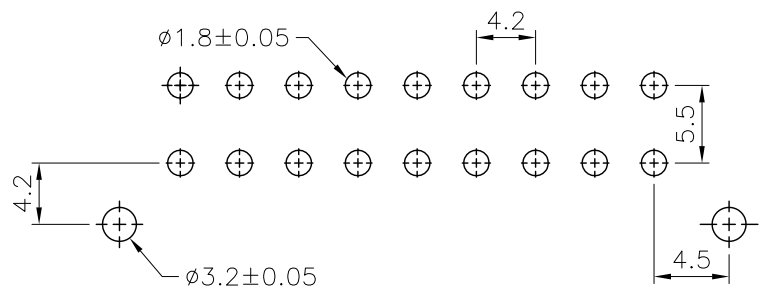
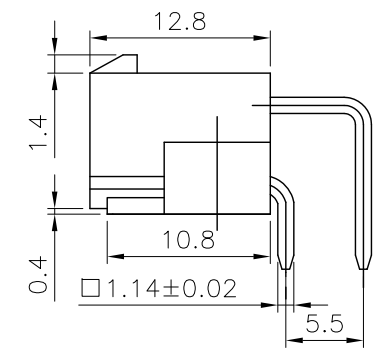
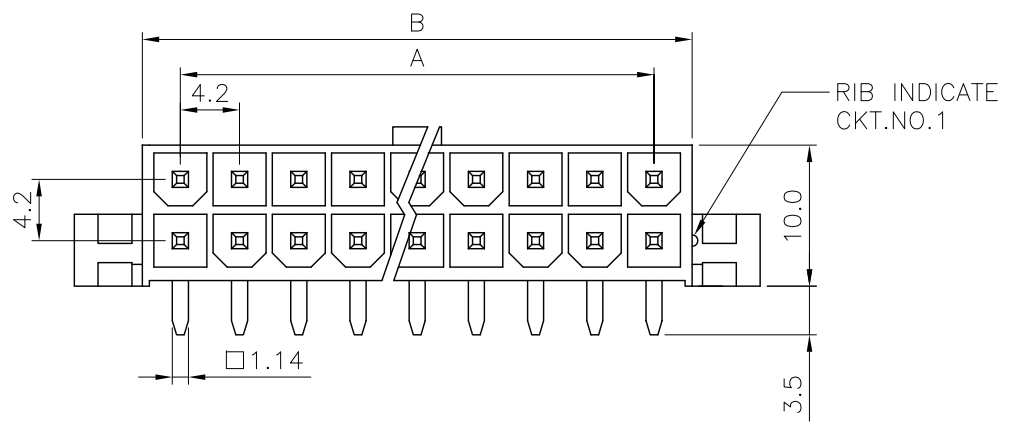
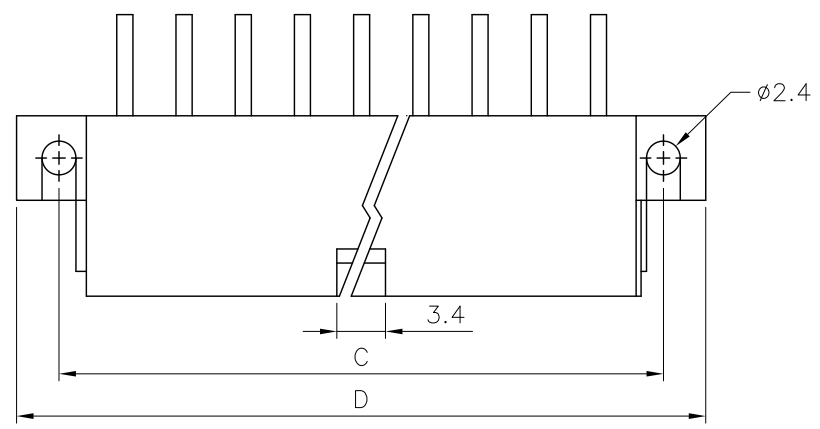
Electrical Characteristics:

Voltage Rating: AC/DC 600V RMS.
 Current Rating: (Used With #18 AWG)

Circuits	2	4~6	8~10	12~24
Ampere	9 A	8 A	7 A	6 A

Dielectric Withstanding Voltage: AC 1500V For 1 minute.
 Insulator Resistance: 1000M Ω min. at DC 500V.
 Contact Resistance: 10m Ω max. at DC 100mA.
 Operating Temperature: -40°C~+105°C.

***RoHS Compliant**



P.C.Board Layout

Series: 4973-xx I R B -V0
 No. of Position: xx
 T: Tin Plated
 UL94V-0
 B: Bulk Package
 R: Right Angle

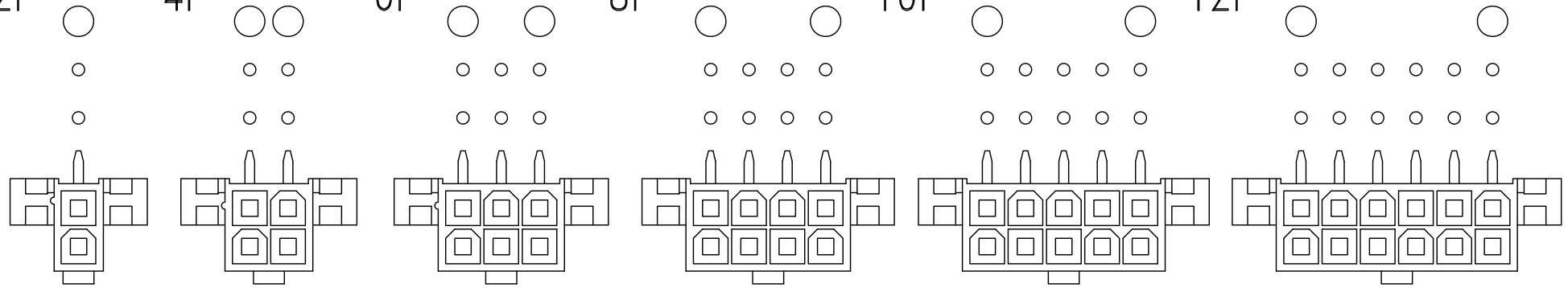
Position	Dimension			
	A	B	C	D
2		5.4	9.0	15.4
4	4.2	9.6	13.2	19.6
6	8.4	13.8	17.4	23.8
8	12.6	18.0	21.6	28.0
10	16.8	22.2	25.8	32.2
12	21.0	26.4	30.0	36.4
14	25.2	30.6	34.2	40.6
16	29.4	34.8	38.4	44.8
18	33.6	39.0	42.6	49.0
20	37.8	43.2	46.8	53.2
22	42.0	47.4	51.0	57.4
24	46.2	51.6	55.2	61.6

Tolerances	Dwg No.	4973D02019	Title:	
x = ± 0.50	Projection	\oplus \triangleleft	4973 Series	
.x = ± 0.25	Unit	mm	4.2mm Connector	
.xx = ± 0.15	Scale	1:1	R/A Wafer	
	Drawn By	bo-min 01/03'19	667	

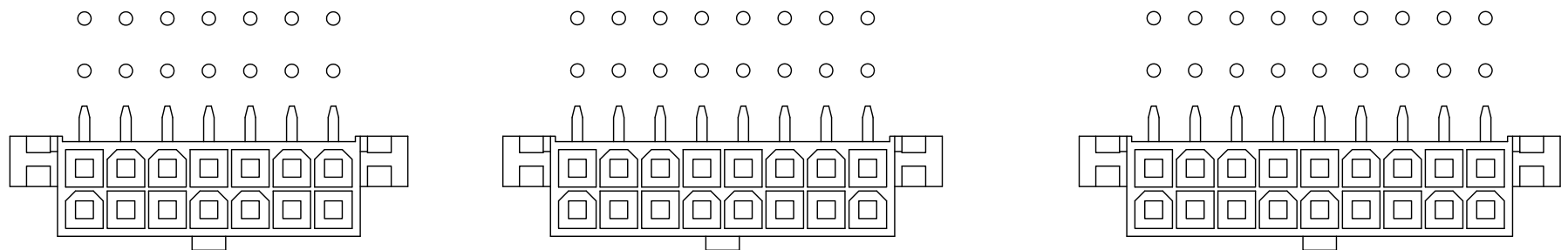
OUPIN			
OUPIN ELECTRONIC(KUNSHAN) CO., LTD.			
P/N: 4973-xxTRB-V0			
SHEET	1/2	Ver.No.	A2

REV.	SPECIFICATION	ECN NO.	APPD.

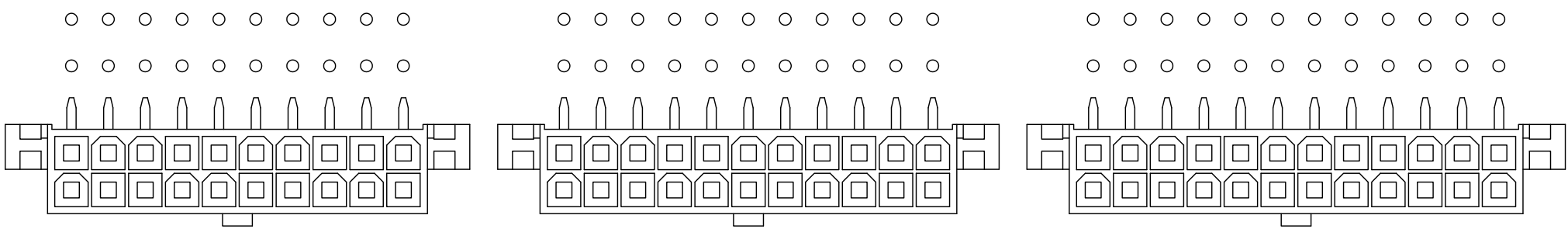
2P 4P 6P 8P 10P 12P



14P 16P 18P



20P 22P 24P



Tolerances	Dwg. No.	4973D02019	
x = ±0.50	Projection		
.x = ±0.25	Unit	mm	Scale 1:1
.xx = ±0.15	Drawn By	bo-min 01/03'19	

Title:
4973 Series
4.2mm Connector
R/A Wafer

OUPIN			
OUPIN ELECTRONIC(KUNSHAN) CO., LTD.			
P/N: 4973-xxTRB-V0			
SHEET	2/2	Ver.No.	A2

0667