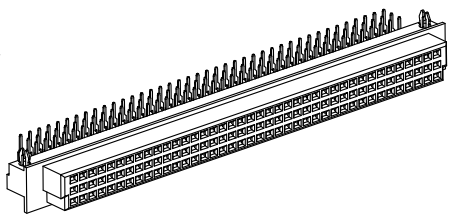
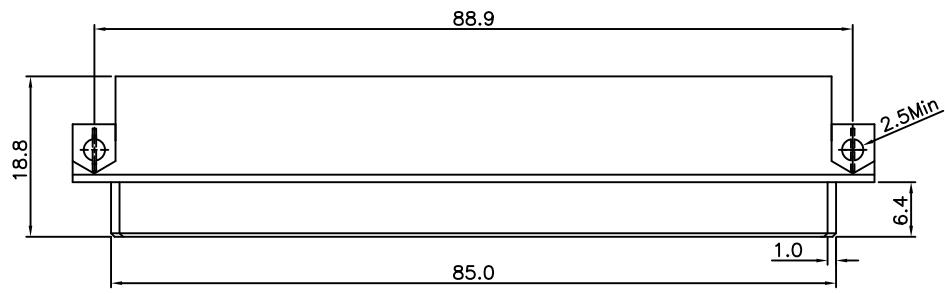
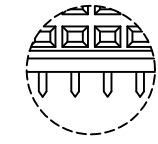
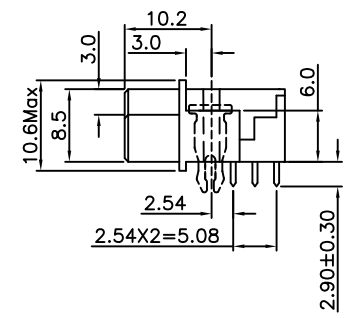
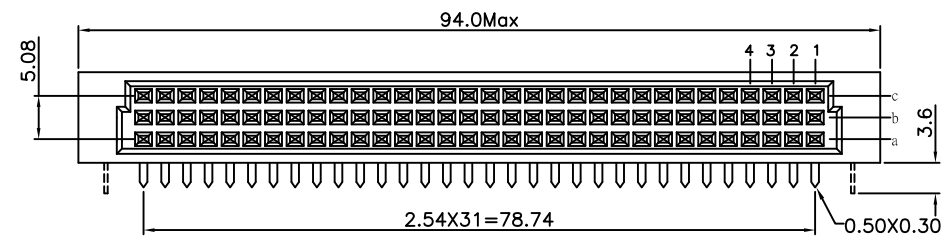


REV.	SPECIFICATION	ECN NO.	APPD.
R2		ECN180153	



**Material:**  
Housing: 30% Glass Filled PBT UL94V-0.  
Contacts: Phosphor Bronze.  
Lock: Phosphor Bronze.

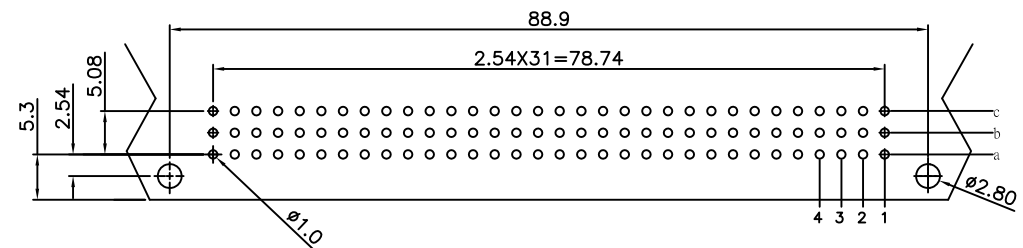
**Electrical Characteristics:**  
Current Rating: 2 AMP.  
Dielectric Withstanding Voltage: AC 1000V For 1 minute.  
Insulator Resistance: 1000MΩ min. at DC 500V.  
Contact Resistance: 20mΩ max. at DC 100mA.  
Operating Temperature: -55°C~+125°C .  
**\*RoHS Compliant**



Dip Type



Press Fit Type



P.C. Board Layout  
(Tolerance:±0.05)

9001-A 1 4 xx 1 C xx P L1 A

Series  
1: 2.54mm  
2: 5.08mm

Female  
Position  
1: Dip Length

C: Dip Tin  
Contact Gold  
G: Gold

P: Press Fit  
L1: With Lock  
A: Tray Package  
Blank: W/O Lock  
Blank: Dip Type

00: G/F  
10: 10μ  
15: 15μ  
30: 30μ

Pitch	Position	Rows with Contacts	Contact Arrange
2.54mm	96	a b c	
	64	a - c	
	32	a - -	
5.08mm	48	a b c	
	32	a - c	
	16	a - -	

<b>Tolerances</b>	<b>Dwg. No.</b>	9001D14013	<b>Title:</b>	9001-A Series	<b>OUPIN</b> OUPIN ELECTRONIC(KUNSHAN) CO., LTD. P/N: 9001-A14xx1CxxPL1A
x = ±0.5	<b>Projection</b>		DIN41612 R type Female	<b>SHEET</b>	
.x = ±0.25	<b>Unit</b>	mm	Scale 1:1	1/1	
.xx = ±0.15	<b>Drawn By</b>	MXM 01/31'18			<b>Ver.No.</b>
					R2