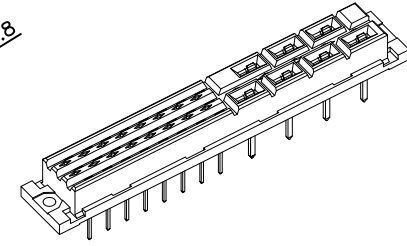
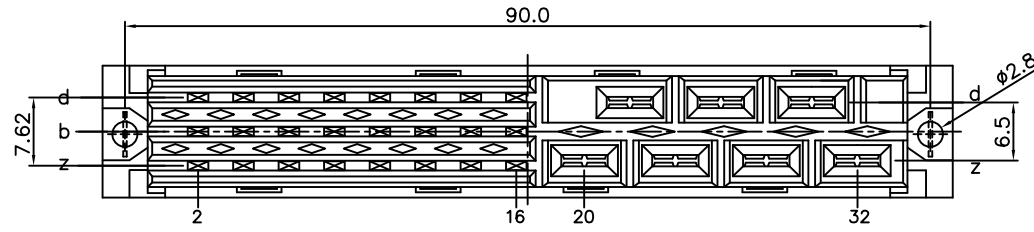


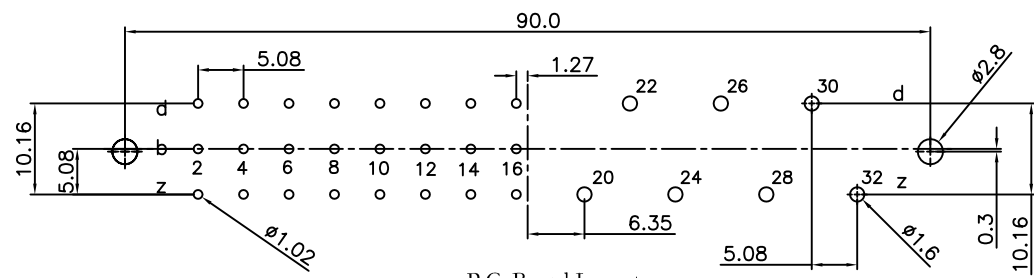
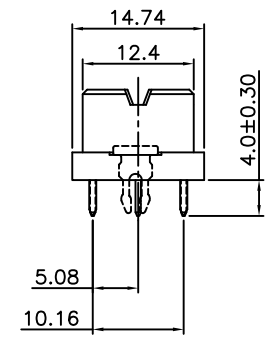
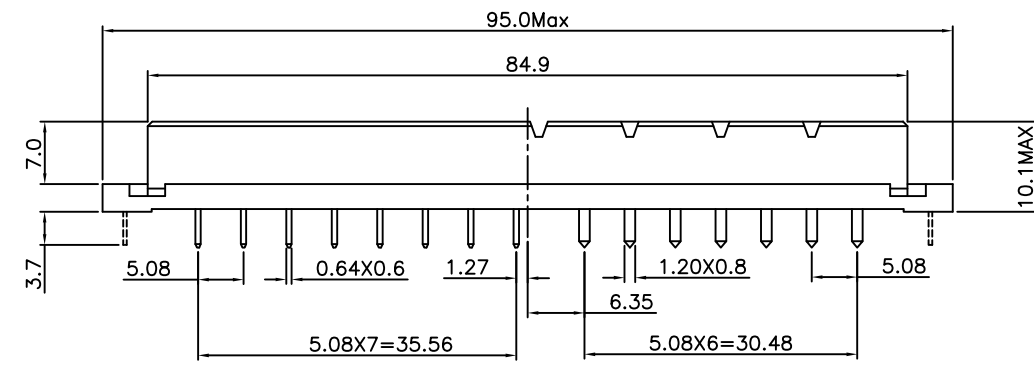
REV.	SPECIFICATION	ECN NO.	APPD.
R3		ECN110452	



Material:
Housing: Thermoplastic Polyester Glass Filled UL94V-0.
Contacts: Copper Alloy.
Lock: Copper Alloy.

Electrical Characteristics:
Current Rating: 5.6 AMP/15 AMP.
Dielectric Withstanding Voltage: F Type AC 1550V/ H Type AC 3100V.
Insulator Resistance: 1000MΩ min. at DC 500V.
Contact Resistance: F Type 15mΩ max/ H Type 8mΩ max. at DC 100mA.
Operating Temperature: -55°C~+125°C .

***RoHS Compliant**



P.C. Board Layout
(Tolerance: ±0.05)

9001- 66 31 1 C xx L1 A

Series
6: Female
Position
1: Dip Length

C: z20~z32TIN/NI Plating
Other With Selective Gold Plated
A: z20~z32AG/NI Plating
Other With Selective Gold Plated

A: Tray Package
Blank: W/O Lock
L1: With Lock
00: G/F
10: 10μ"
15: 15μ"
30: 30μ"

Tolerances	Drawn No.	9001D66002	
x = ±0.5	Projection	⊕ ◂	
.x = ±0.25	Unit	mm	Scale 1:1
.xx = ±0.15	Drawn By	Yun 04/28'11	

Title: 9001 Series
DIN41612
Mixed Style H7/F24 Female



OUPIN ELECTRONIC(KUNSHAN) CO., LTD.			
P/N: 9001-66311CxxL1A			
SHEET	1/1	Ver.No.	R3