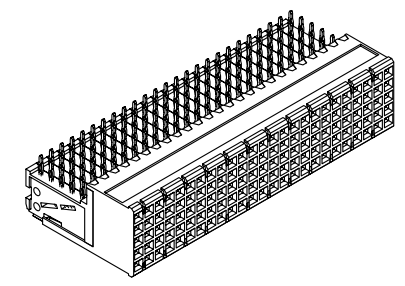
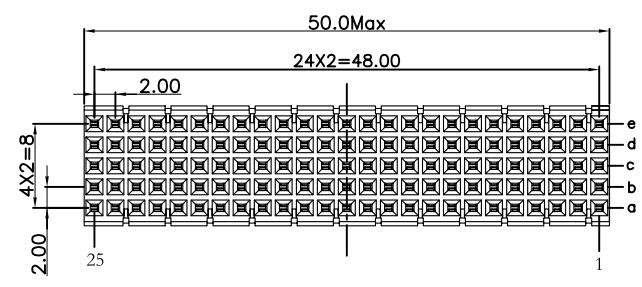


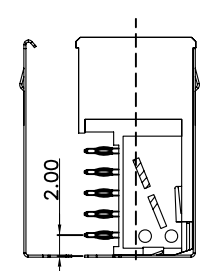
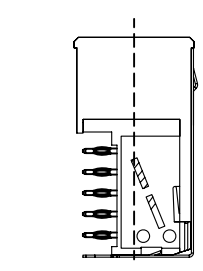
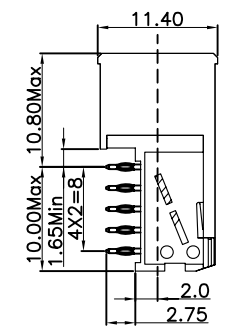
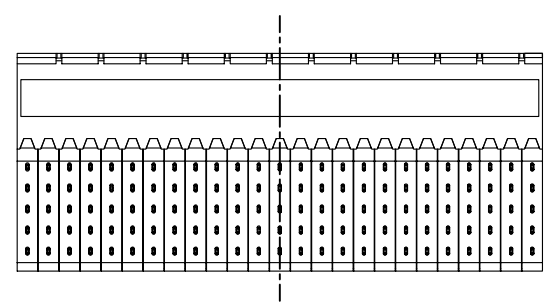
REV.	SPECIFICATION	ECN NO.	APPD.
R4		ECN121230	



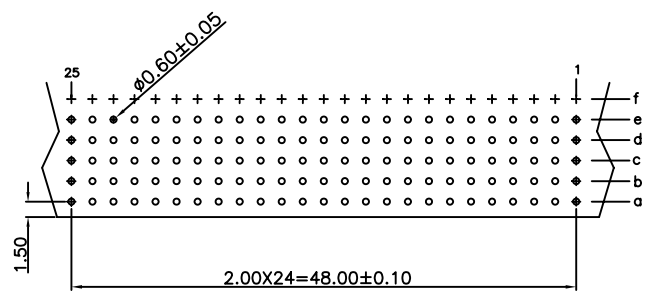
**Material:**  
Housing: Thermoplastic Polyester Glass Filled UL94V-0.  
Contacts: Copper Alloy

**Electrical Characteristics:**  
Current Rating: 1 AMP.  
Dielectric Withstanding Voltage: AC 750V For 1 minute.  
Insulator Resistance: 10000MΩ min. at DC 500V.  
Contact Resistance: 20mΩ max. at DC 100mA.  
Operating Temperature: -55°C ~ +125°C .

**\*RoHS Compliant**



None Shielded                      With Top Body Shielded                      With Top Body Shielded and Bottom Shielded



P.C. Board Layout  
(Top View)

9111- 7 2 B 125 1 Cxx U  
Series      7Row      2: Female      B: Type B      Position      U: Tube Package

1: None Shielded  
2: Top Body Shielded  
3: Top Body Shielded and Bottom Shielded (Package Separately)

Cxx: Dip Tin Contact Gold  
10: 10u"  
30: 30u"  
CB30: Dip Tin Contact Au+Pd/Ni  
30: 30u"

<b>Tolerances</b>	<b>Dwg. No.</b>	9111D72002	<b>Title:</b>		<b>OUPIIN</b> OUPIIN ELECTRONIC(KUNSHAN) CO., LTD.
x = ±0.5	<b>Projection</b>		9111 Series		
.x = ±0.25	<b>Unit</b>	mm	Hard Metric Connector		
.xx = ±0.15	<b>Scale</b>	1:1	Female Right Angle Type B-25		<b>P/N:</b> 9111-72B125xCxxU
	<b>Drawn By</b>	CQ 12/14'12	<b>SHEET</b>	1/1	<b>Ver.No.</b> R4