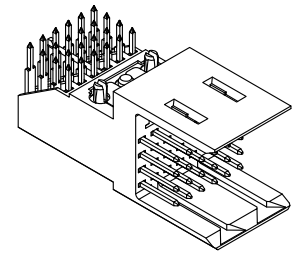
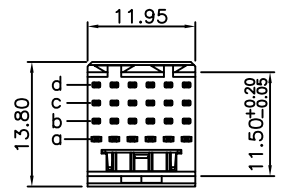


REV.	SPECIFICATION	ECN NO.	APPD.
R3		ECN200426	



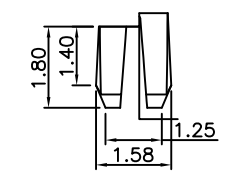
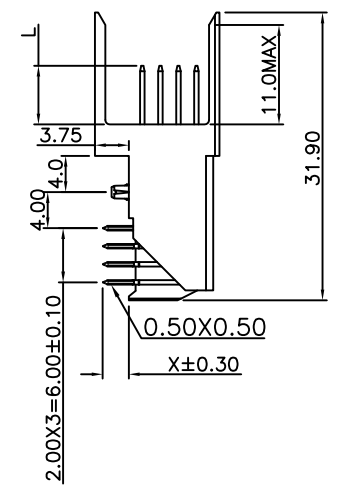
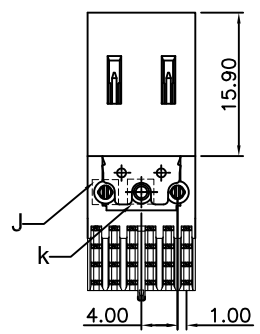
Material and Plating:

Housing: LCP,UL94V-0,Beige.
Contacts: Brass
 Gold Plated or Au+Pd/Ni on Contact Area and 80u"Min Tin Plated on Solder tail over Nicker 50u"Min.
 Metal Plate:Brass.

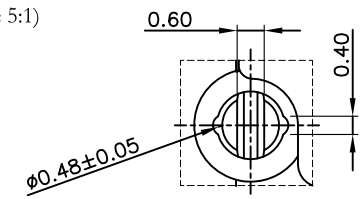
Electrical Characteristics:

Current Rating: 1 AMP.
Dielectric Withstanding Voltage: AC 1000V For 1 minute.
Insulator Resistance: 1000MΩ min. at DC 500V.
Contact Resistance: Row a 25mΩ max.
 Row b 35mΩ max.
 Row c 40mΩ max.
 Row d 45mΩ max.
Operating Temperature: -55°C ~+125°C .

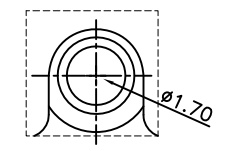
***RoHS Compliant**



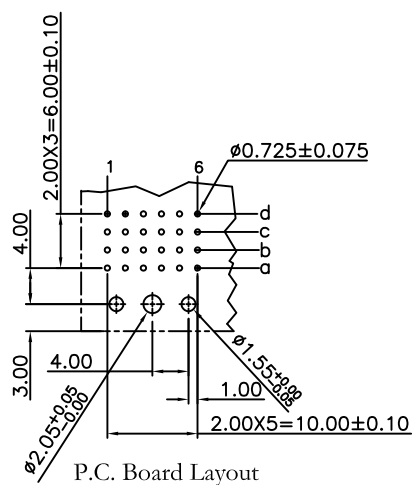
(Scale 5:1)



Detail: J
(Scale 5:1)



Detail: K
(Scale 5:1)



P.C. Board Layout
(Tolerance:±0.05)

9111-C 4 5 24 x 1 1 Cxx D T
 Series
 4: 4Rows
 5: Male Signal
 Position
 A:A~H Contact Length
 1:Dip Length
 2:Dip Length
 1.With Metal Plate
 T: Tape Reel Package
 D:Dip Type
 CB30: Dip Tin Contact Au+Pd/Ni
 30: 30u"
 Cxx:Selective Gold Plated
 10: 10u"
 30: 30u"

TYPE NO.	L
A	5.00
B	5.75
E	6.50
F	7.25
H	8.00
1	2.90
2	3.53

Tolerances	Dwg No.	9111D45034
x = ±0.5	Projection	
.x = ±0.25	Unit	mm
.xx = ±0.15	Scale	1:1
	Drawn By	WQ 04/10'20

Title: 9111-C Series
 H.D 2.0mm
 Futurebus(+)4 Rows Male
 Right Angle Dip Type

OUPIN
OUPIN ELECTRONIC(KUNSHAN) CO., LTD.
 P/N: 9111-C4524x11CxxDT
 SHEET 1/1 Ver.No. R3