

REV.	SPECIFICATION	ECN NO.	APPD.
R5		ECN230636	

**Material and Plating:**

Housing: LCP, UL94V-0, BLACK.

Power Contacts: High Conductivity Copper.

Gold Plated or Au+Pd/Ni on Contact Area and 80u" Min Tin Plated on Solder Tail over nickel 50u" Min .

Signal Contacts : Brass.

Gold Plated or Au+Pd/Ni on Contact Area and 80u" Min Tin Plated on Solder Tail over nickel 50u" Min .

**Electrical Characteristics:**

Current Rating: Signal Pin 1.0 AMP.

Power Pin 30 AMP.

Insulator Resistance: Signal:1000MΩ min. at DC 500V.

Power:5000MΩ min. at DC 500V.

Dielectric Withstanding Voltage:

Signal Pin DC 500V For 1 minute.

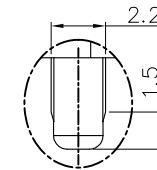
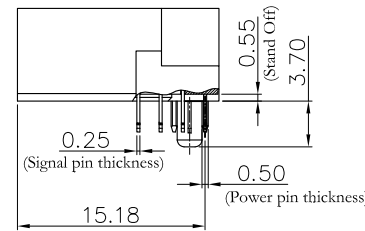
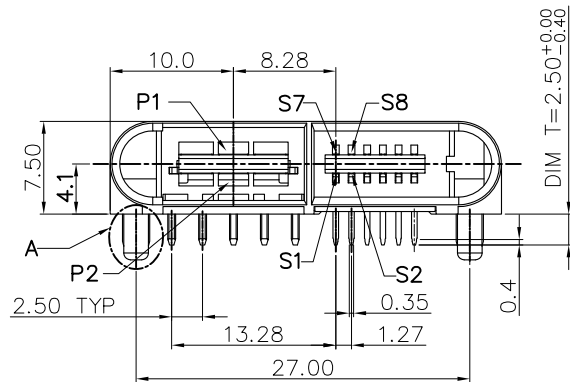
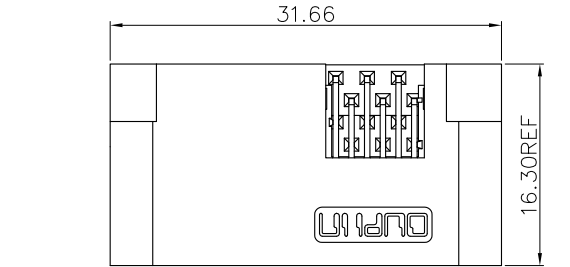
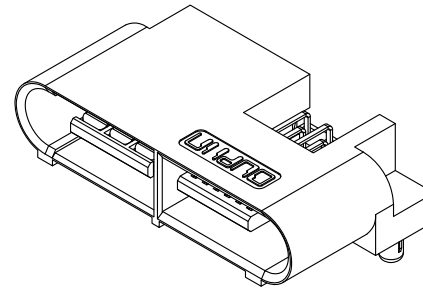
Power Pin DC 1000V For 1 minute.

Contact Resistance: Signal Pin 20mΩ max. at DC 20mA.

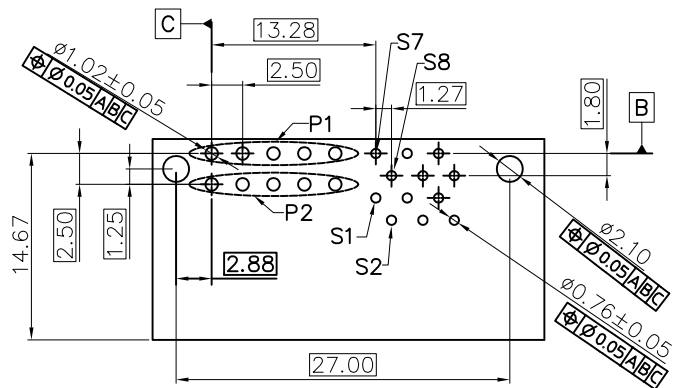
Power Pin 5.0mΩ max. at DC 20mA.

Operating Temperature: -40°C ~+105°C .

**\*RoHS Compliant**



Detail A  
SCALE: 2:1



P.C.Board Layout  
(Tolerance: ±0.05)

- Series — 9392-
  - 1: Male Right Angle — 1
  - P02: Power Contact — P02
  - S12: Signal Contact — S12
  - P: With Post — P
  - 3: With Blind Mate Guides — 3
  - Cxx — 1
  - D — D
  - A — A
- A: Tray Package  
D: Dip Type  
CB30: Dip Tin Plated Contact Au+Pd/Ni Plated  
30: 30 u"  
C: Selective Gold Plated  
10: 10 u"  
30: 30 u"  
1: Dim T=2.50mm

Tolerances	Dwg. No.	9392-D0000-045		Title:
x = ±0.5	Projection			9392 Series Low Profile Hybrid Power Male
.x = ±0.25	Unit	mm	Scale 1:1	
.xx = ±0.15	Drawn By	JCQ 06/27'23		

<b>OUPIN</b>			
OUPIN ELECTRONIC(KUNSHAN) CO., LTD.			
P/N: 9392-1P02S12P31CxxDA			
SHEET	1/1	Ver. No.	R5