

REV.	SPECIFICATION	ECN NO.	APPD.
R1	NEW	ECN200560	

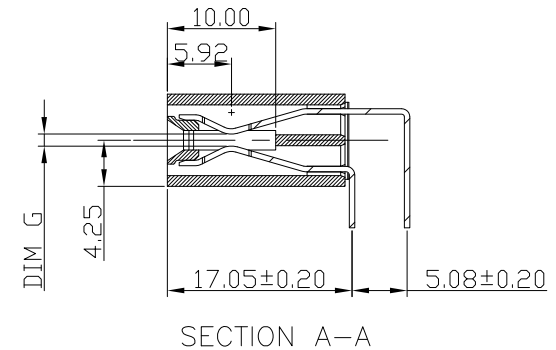
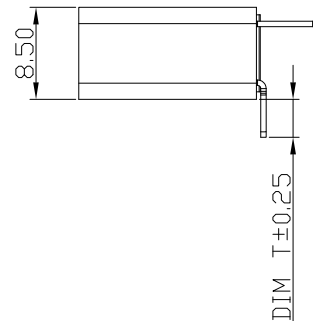
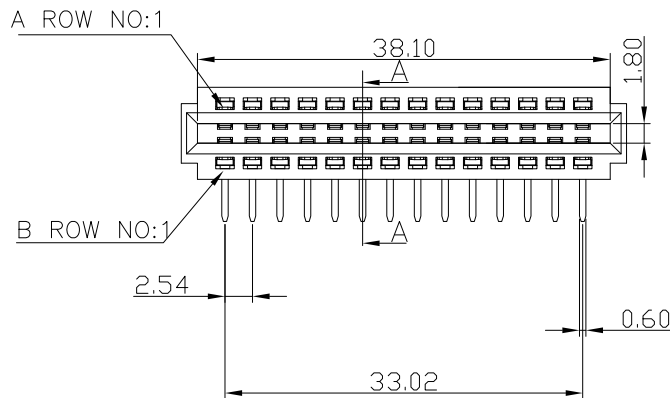
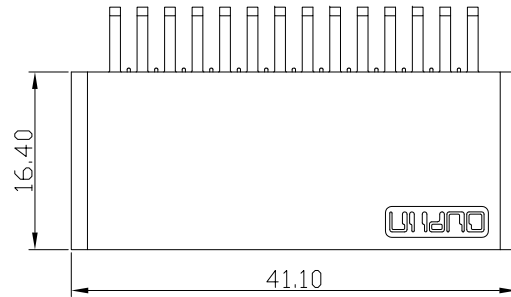
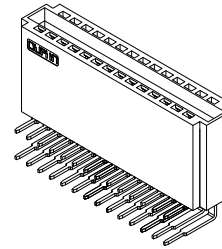
**Material and Plating:**

Housing: LCP, UL94V-0, BLACK.  
 Power Contacts: High Conductivity Copper .  
 Gold plated on Contact Area and 80u" Min Matte Tin Plated  
 on Solder Tail over nickel 50u" Min .

**Electrical Characteristics:**

Current Rating: 12.5A(UL)  
 Dielectric Withstanding Voltage: DC 1000V For 1 minute.  
 Insulator Resistance: 5000MΩ min. at DC 500V.  
 Contact Resistance: 2.5mΩ max. at DC 100mA.  
 Operating Temperature: -55°C ~+105°C.

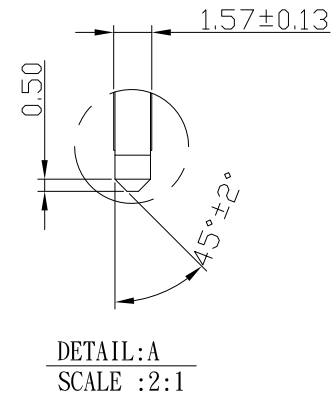
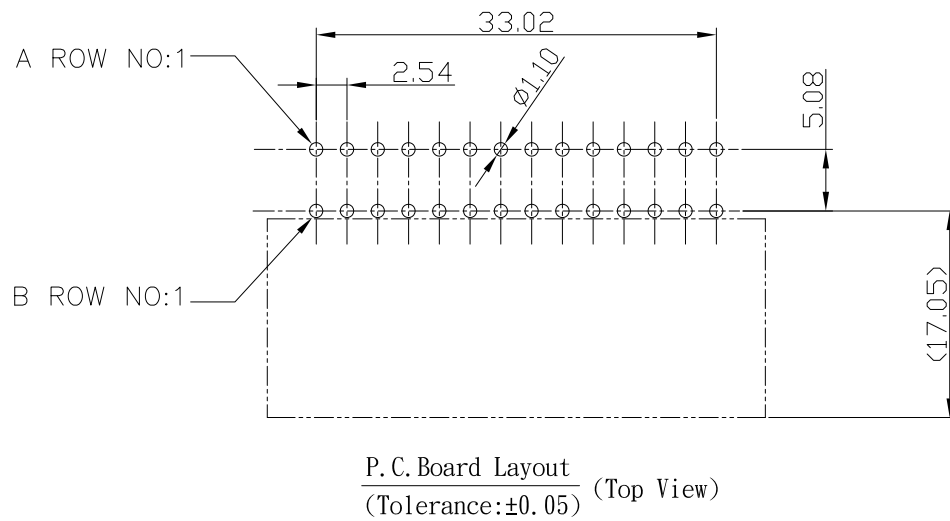
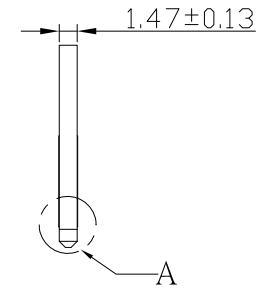
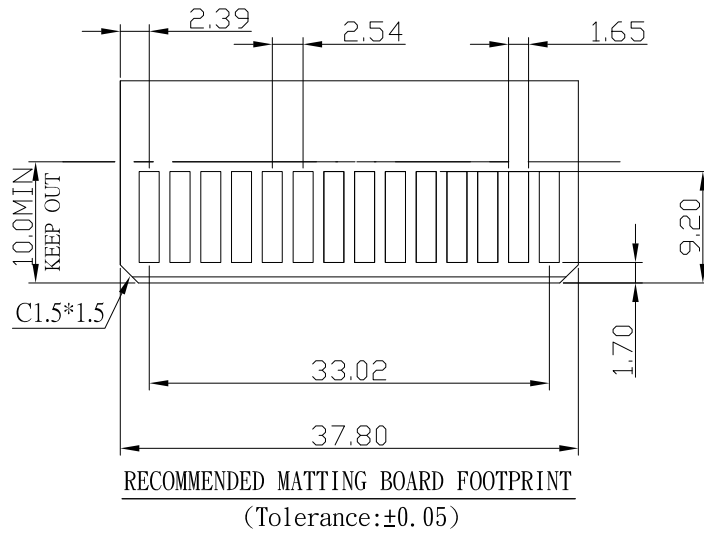
**\*RoHS Compliant**



9393-F 4 P28 N 1 1 A C05 D A  
 Series 4:Female Right Angle Position N:W/O Post 1:DIM T=3.5mm 2:DIM T=2.6mm 1:DIM G(GAP)=1.2mm  
 A: Tray Package D:Dip Type P:Press-Fit Type C: Selective Gold Plated 05: 05u" A:Power pitch 2.54 B:Power pitch 5.08

Tolerances	Dwg. No.	9393-D0000-032	Title:		<b>OUPIN</b> OUPIN ELECTRONIC(KUNSHAN) CO., LTD. P/N: 9393-F4P28N11AC05DA			
x = ±0.5	Projection		9393-F Series Power Edge Connector					
.x = ±0.25	Unit	mm	Scale	1:1				
.xx = ±0.15	Drawn By	GYJ 05/25/20'						

REV.	SPECIFICATION	ECN NO.	APPD.
R1	NEW	ECN200560	



Tolerances	Dwg. No.	9393-D0000-032	Title:			
x = ±0.5	Projection		9393-F Series			
.x = ±0.25	Unit	mm	Scale	1:1	Power Edge Connector	
.xx = ±0.15	Drawn By	GYJ 05/25/20'	 <b>OUPIIN ELECTRONIC(KUNSHAN) CO., LTD.</b> P/N: 9393-F4P28N11AC05DA			
		SHEET		2/2	Ver. No.	R1