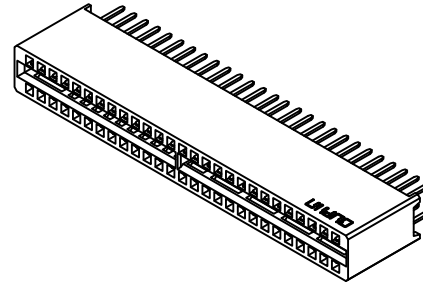
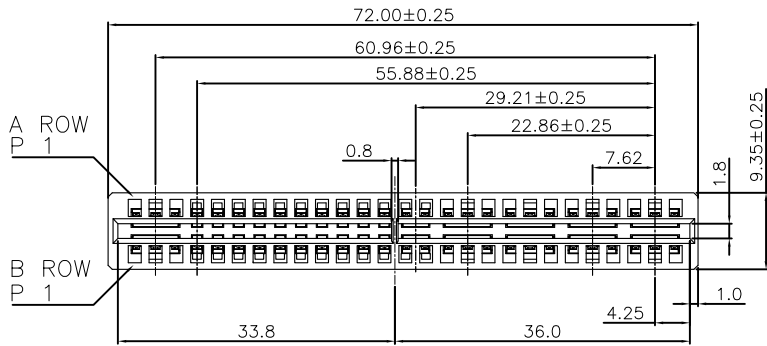


REV.	SPECIFICATION	ECN NO.	APPD.
R2		ECN190903	



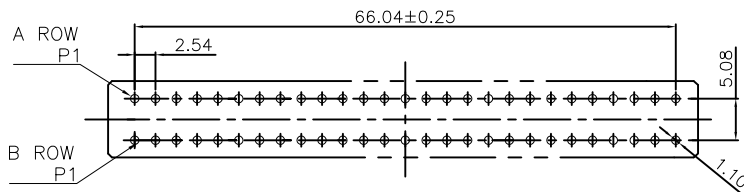
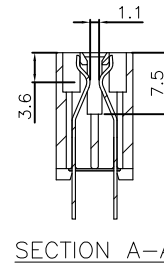
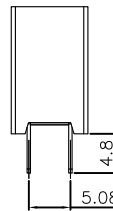
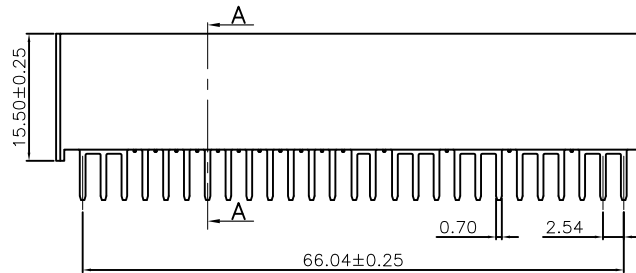
**Material and Plating:**

Housing: LCP, UL94V-0, BLACK.  
 Power Contacts: High Conductivity Copper .  
 30u" Au+Pd/Ni on Contact Area and 80u" Min Tin Plated on Solder Tail over Nickel 50u" Min .

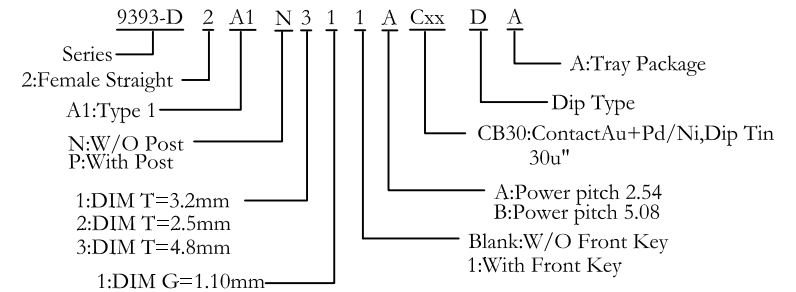
**Electrical Characteristics:**

Current Rating: 12.5 A(UL).  
 Dielectric Withstanding Voltage: DC 1000V For 1 minute.  
 Insulator Resistance: 5000MΩ min. at DC 500V.  
 Contact Resistance: 2.5mΩ max.  
 Operating Temperature: -5°C ~+105°C .

**\*RoHS Compliant**



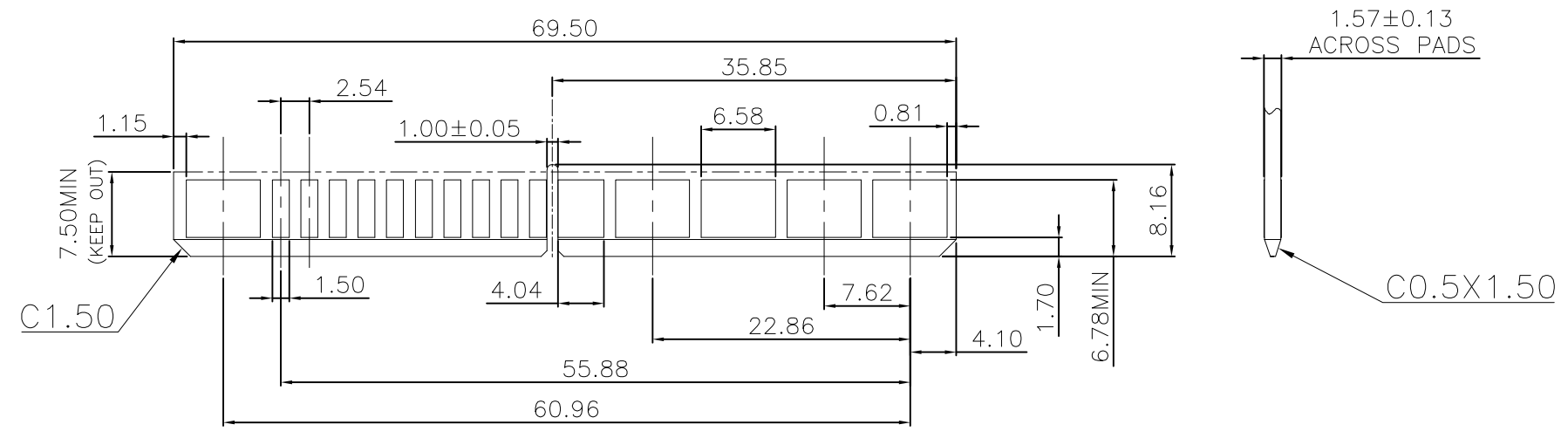
RECOMMEND P.C.B. BOARD LAYOUT(BOTTOM SIDE)  
 AND THE THICKNESS IS 1.60mm



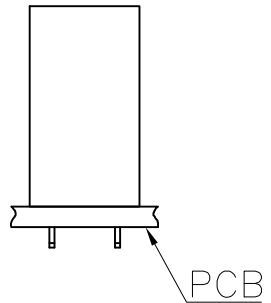
<b>Tolerances</b> x=±0.50 .x=±0.25 .xx=±0.15	<b>Dwg. No.</b>	9393-D0000-011		<b>Title:</b> 9393-D Series POWER EDGE CONNECTOR	 <b>OUPIN ELECTRONIC(KUNSHAN) CO., LTD.</b> P/N: 9393-D2A1N311ACxxDA	
	<b>Projection</b>					SHEET 1/2 Ver.No. R2
	<b>Unit</b>	mm	Scale			
<b>Drawn By</b>	GYJ 09/03'19					

Type	Pin Arrangement																															
A1	A ROW	○	○	○	○	○	○	○	○	○	○	○	○	○	○	○	○	○	○	○	○	○	○	○	○	○	○	○	○	○	○	○
	B ROW	○	○	○	○	○	○	○	○	○	○	○	○	○	○	○	○	○	○	○	○	○	○	○	○	○	○	○	○	○	○	○
	P1																						P27									

REV.	SPECIFICATION	ECN NO.	APPD.
R2		ECN190903	



RECOMMENDED DAUGHTER CARD LAYOUT (TOP SIDE)  
Tolerance±0.05



Tolerances	Dwg. No.	9393-D0000-011			Title: 9393-D Series POWER EDGE CONNECTOR
x=±0.50	Projection	⊕ ≡			
.x=±0.25	Unit	mm	Scale	1:1	
.xx=±0.15	Drawn By	GYJ 09/03'19			

<b>OUPIIN</b>			
OUPIIN ELECTRONIC(KUNSHAN) CO., LTD.			
P/N: 9393-D2A1N311ACxxDA			
SHEET	2/2	Ver.No.	R2