

REV.	SPECIFICATION	ECN NO.	APPD.
X4		ECN190903	

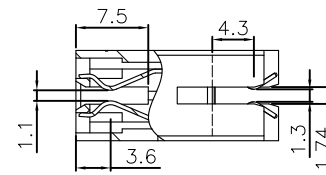
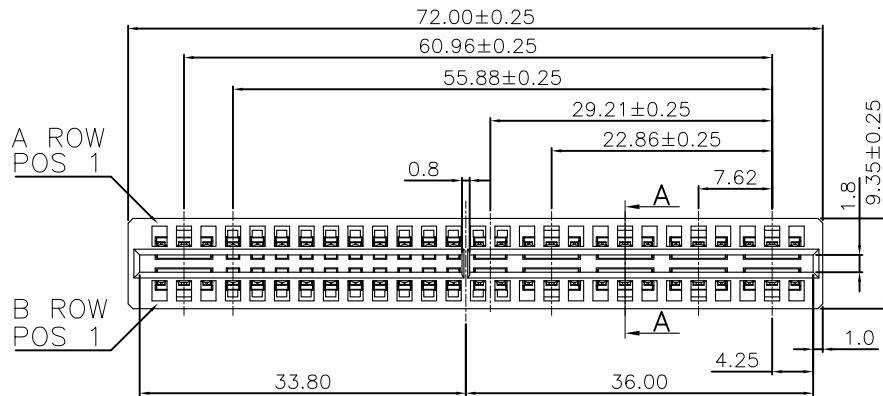
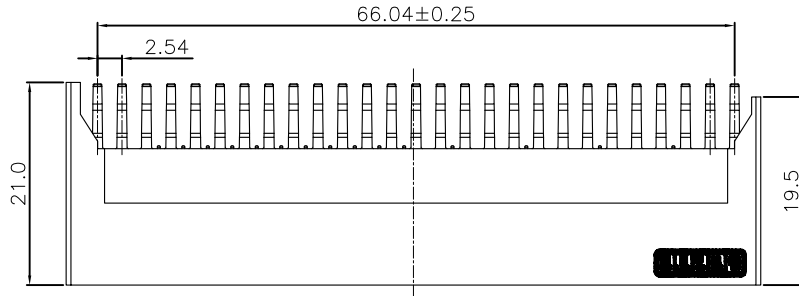
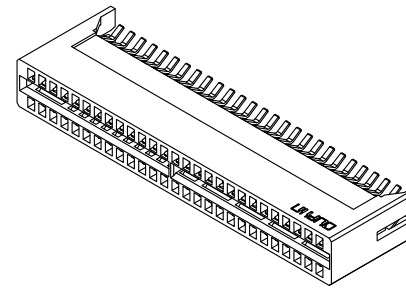
Material:

Housing: LCP, UL94V-0, BLACK.
 Power Contacts: High Conductivity Copper .
 Gold Plated or Au+Pd/Ni on Contact Area and 80μ" Min
 Tin Plated on Solder Tail over nickel 50μ" Min .

Electrical Characteristics:

Insulation Resistance: 1000V For 1 minute.
 Current Rating: 12.5 A(UL).
 Dielectric Withstanding Voltage:
 Insulator Resistance: 5000MΩ min. at DC 500V.
 Contact Resistance: 2.5mΩ max.
 Operating Temperature: -5°C ~+105°C .

***RoHS Compliant**



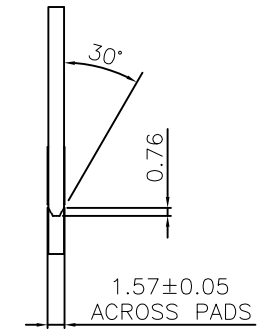
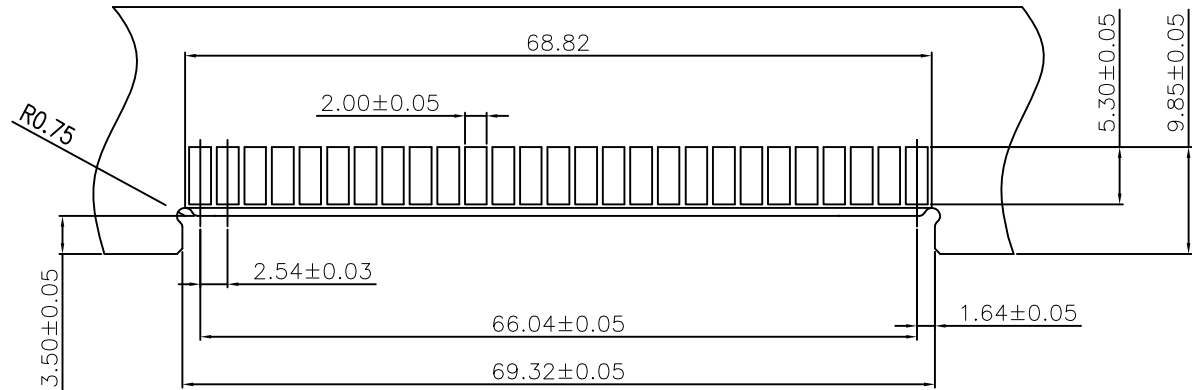
SECTION A-A

- 9393-D 2 A1 N 1 1 6 A Cxx K A
- Series
- 2:Female Straight
- A1:Type 1
- N:W/O Post
- P:With Post
- 1:Begin DIM G 1.10mm
- 1:End DIM G 1.30mm
- 6:With Front Key, W/O Host Board Key,W/O Screw Holes
- A:Tray Package
- K:Straddle Type
- CB30:ContactAu+Pd/Ni,Dip Tin 30u"
- Cxx:Selective Gold Plated 10u" 30u"
- A:Power pitch 2.54
- B:Power pitch 5.08

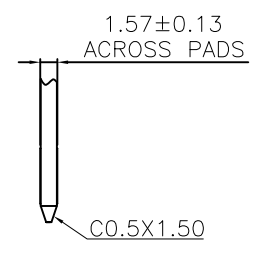
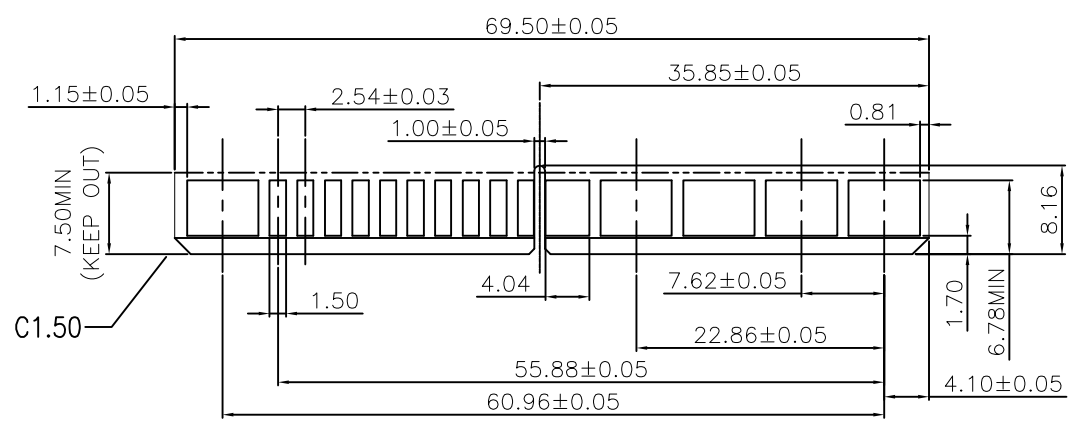
Tolerances x=±0.50 .x=±0.25 .xx=±0.15	DWG. No.	9393-D0000-010		Title: 9393-D Series POWER EDGE CONNECTOR	 OUPIIN ELECTRONIC(KUNSHAN) CO., LTD.	
	Projection					P/N: 9393-D2A1N116ACxxKA
	Unit mm	Scale	1:1			SHEET 1/2
Drawn By	GYJ 09/03'19					

Type	Pin Arrangement
A1	

REV.	SPECIFICATION	ECN NO.	APPD.
X4		ECN190903	



RECOMMEND P.C.B. BOARD LAYOUT FOR CONNECTOR SOLDER TAILS
P.C.B. LAYOUT TOLERANCE: ±0.05



RECOMMENDED DAUGHTER CARD LAYOUT (TOP SIDE)
Tolerance±0.05

Tolerances x=±0.50 .x=±0.25 .xx=±0.15	Dwg. No. 9393-D0000-010		Title: 9393-D Series POWER EDGE CONNECTOR		 OUPIIN ELECTRONIC(KUNSHAN) CO., LTD.	
	Projection		Scale 1:1			P/N: 9393-D2A1N116ACxxKA
	Unit mm	Scale 1:1	Drawn By GYJ 09/03'19		SHEET 2/2	Ver.No. X4