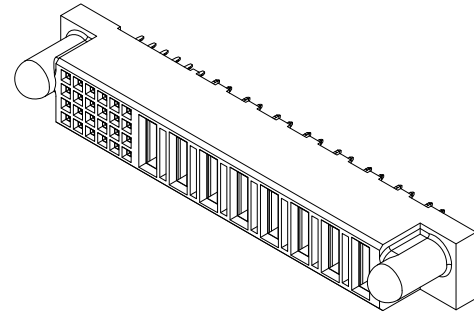
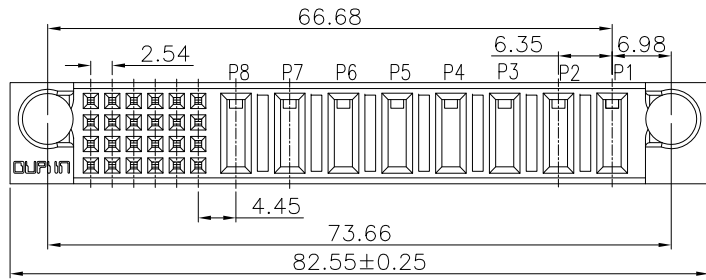


| | | | |
|------|---------------|-----------|-------|
| REV. | SPECIFICATION | ECN NO. | APPD. |
| R2 | | ECN230417 | |



Material and Plating:

Housing: LCP, UL94V-0, Black .
Power Contacts: High Conductivity Copper.
 30u" Au+Pd/Ni on Contact Area and 80u" Min Tin Plated on Solder Tail over nickel 50u" Min under plated .
Signal Contacts : Phosphor Bronze.
 30u" Au+Pd/Ni on Contact Area and 80u" Min Tin Plated on Solder Tail over nickel 50u" Min under plated .
Lock: Phosphor Bronze.

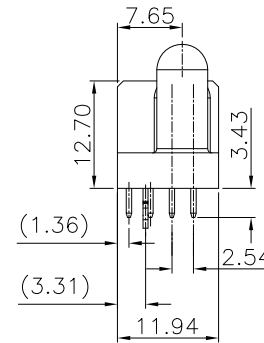
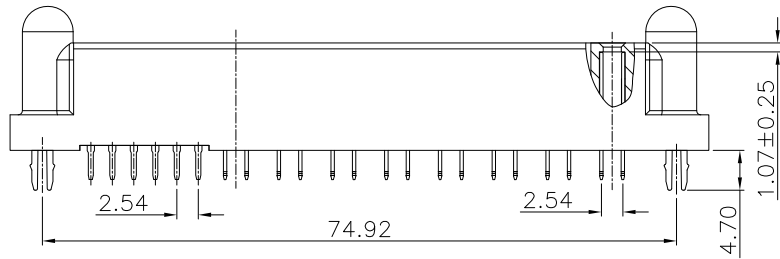
Electrical Characteristics:

Current Rating: Signal Pin 2.5 AMP.
 Power Pin 30 AMP.
Dielectric Withstanding Voltage:
 Signal Pin DC 1000V For 1 minute.
 Power Pin DC 2500V For 1 minute.
Insulator Resistance: Signal Pin 5000MΩ min. at DC 500V.
 Power Pin 20000MΩ min. at DC 500V.
Contact Resistance: Signal Pin 15mΩ max. at DC 20mA.
 Power Pin 0.7mΩ max. at DC 20mA.
Operating Temperature: -40°C ~+105°C .

***RoHS Compliant**

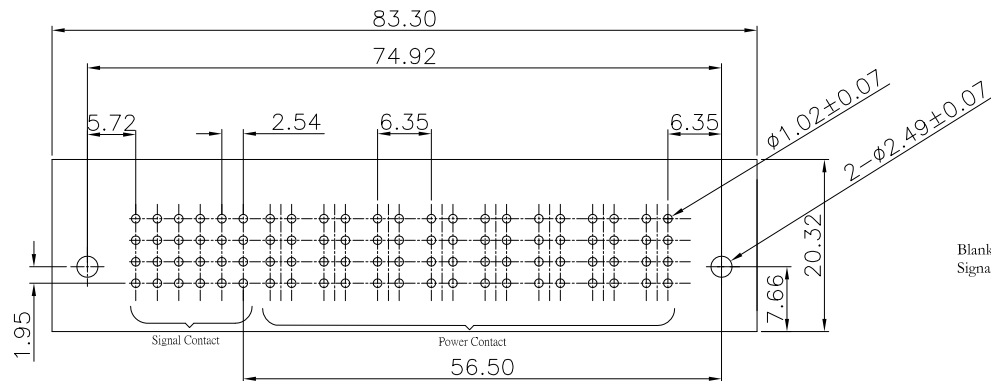
Notes :

- H: High density Power---PCB Mount 5.08mm Pitch
- P: DC Power---PCB Mount 6.35mm Pitch
- A: AC Power---PCB Mount 7.62mm Pitch
- S: Signal---PCB Mount 2.54mm Pitch



| ROWS | SIGNAL | | | | | POWER | | | | | | | | |
|------|--------|---|---|---|---|-------|----|----|----|----|----|----|----|----|
| | 6 | 5 | 4 | 3 | 2 | 1 | P8 | P7 | P6 | P5 | P4 | P3 | P2 | P1 |
| D | L | L | L | L | L | L | FS | FS | FS | FS | FS | FS | FS | FS |
| C | L | L | L | L | L | L | FS | FS | FS | FS | FS | FS | FS | FS |
| B | L | L | L | L | L | L | FS | FS | FS | FS | FS | FS | FS | FS |
| A | L | L | L | L | L | L | FS | FS | FS | FS | FS | FS | FS | FS |

| | |
|---|----|
| POWER CONTACT TO THE TOP DISTANCE 2.34mm, THE MATING LENGTH 3.87mm | FM |
| POWER CONTACT TO THE TOP DISTANCE 1.07mm, THE MATING LENGTH 5.14mm | FS |
| SIGNAL CONTACT 3.43 SOLDER TAIL, PD/NI | L |



P.C.Board Layout
(Tolerance:±0.05)

9391-A 2 S24 P08 CB 30 D L A
 Series
 2: Female Straight
 Blank: Without Contact
 Signal Contact: Sxx
 No. of position
 A: Tray Package
 L: With Lock
 Blank: Without Lock
 D: Dip Type
 30: 30u"
 CB: Dip Tin Plated
 Contact Au+Pd/Ni Plated
 Blank: Without Contact
 Power Contact: Hxx, Pxx, Axx
 No. of position

| | | | | | |
|-------------|------------|----------------|-------|------------------------|--|
| Tolerances | Dwg. No. | 9391-D0000-142 | | Title: | |
| x = ±0.5 | Projection | ⊕ | | 9391 Series High Power | |
| .x = ±0.25 | Unit | mm | Scale | Socket Straight | |
| .xx = ±0.15 | Drawn By | XS 04/12'23 | Scale | Dip Type | |

| | | | |
|-------------------------------------|-----|----------|----|
| OUPIN | | | |
| OUPIN ELECTRONIC(KUNSHAN) CO., LTD. | | | |
| P/N: 9391-A2S24P08CB30DLA | | | |
| SHEET | 1/1 | Ver. No. | R2 |