

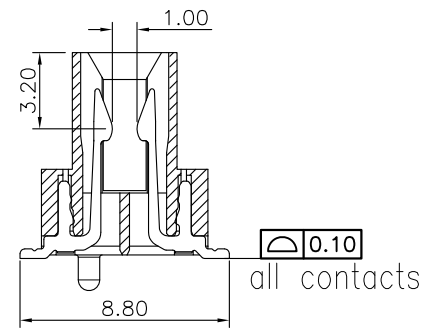
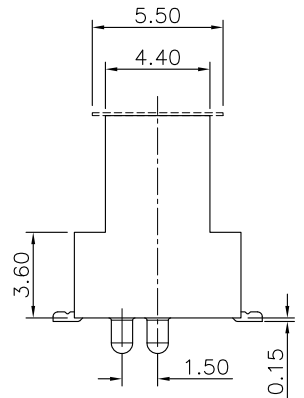
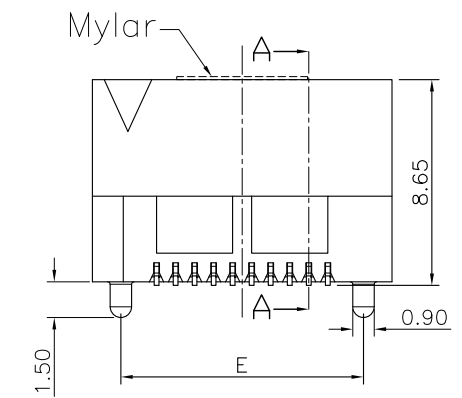
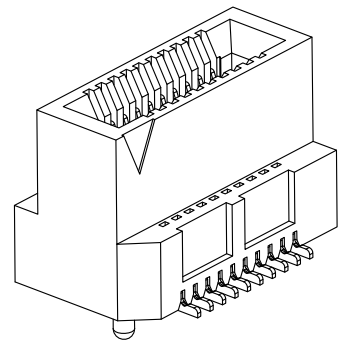
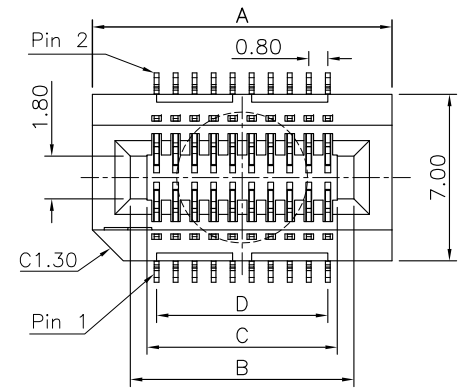
REV.	SPECIFICATION	ECN NO.	APPD.
X2			

Material:
Housing: High Temperature Plastic, UL94V-0.
Contacts: Copper Alloy.

Electrical Characteristics:
Current Rating: 1.8A @ 30°C Temperature Rise.
Dielectric Withstanding Voltage: AC 600V For 1 minute.
Insulator Resistance: 100000MΩ min. at DC 500V.
Contact Resistance: 15.8mΩ max. at DC 100mA.
Operating Temperature: -55°C~+125°C.

***RoHS Compliant**

Insertion Depth: 4.22mm To 5.66mm.
Mates With: 1.60±0.1mm Thick Edge Card.
Speed: 18Gbps @-3dB.



Section A-A

8208- 2 X xx C 30 D P T - S

Series: 8208-
Double Row: 2 X
Position Per Row: xx
C: Selective Gold Plated
30: 30μ"
D: SMD Type
P: With Post
N: Without Post
T: Tape & Reel Package
U: Tube Package
S: Mylar
P: Plastic Pad
Blank: Without Pad

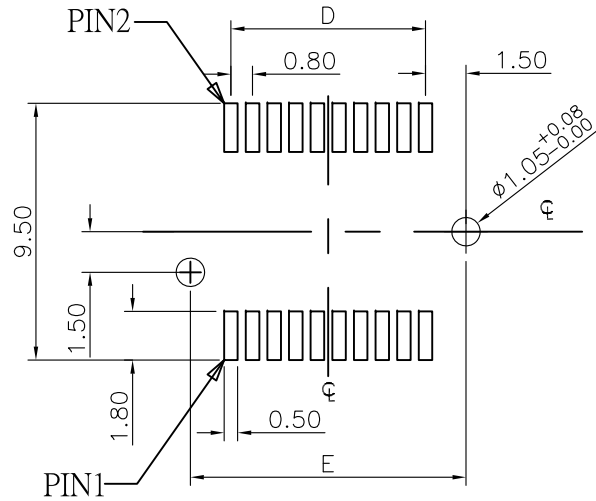
Position		**Available Position					
		Dimension					
		A	B	C	D	E	F
*	20	12.60	9.40	8.00	7.20	10.20	9.26
*	40	20.60	17.40	16.00	15.20	18.20	17.25
	60	28.60	25.40	24.00	23.20	26.20	25.25
	70	32.60	29.40	28.00	27.20	30.20	29.25

Tolerances	Dwg. No.	8208-D0000-014	Title:	8208 Series Edge Card Connector 0.80mm (0.0315") Pitch SMD Type
x = ±0.50	Projection		Scale	1:1
.x = ±0.25	Unit	mm	Drawn By	MXM 11/27'17
.xx = ±0.15				

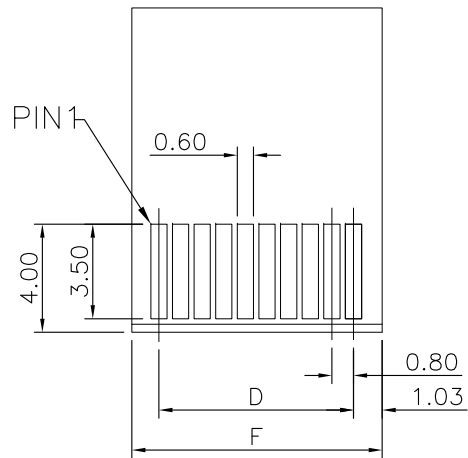
©(r)

OUPIN
OUPIN ELECTRONIC(KUNSHAN) CO., LTD.
P/N: 8208-2XxxC30DPT-S
SHEET 1/2 Ver.No. X2

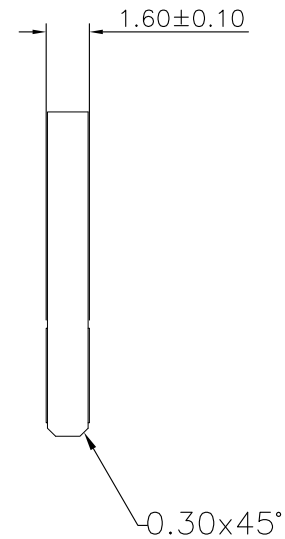
REV.	SPECIFICATION	ECN NO.	APPD.
X2			


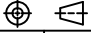


P.C. Board Layout
(Tolerance ± 0.05)



RECOMMENDED MATTING BOARD FOOTPRINT
(Tolerance: ± 0.05)



Tolerances	Dwg. No. 8208-D0000-014	Title:		 OUPIIN ELECTRONIC(KUNSHAN) CO., LTD. P/N: 8208-2XxxC30DPT-S			
x = ± 0.50	Projection 	8208 Series Edge Card Connector 0.80mm (0.0315") Pitch SMD Type					
.x = ± 0.25	Unit mm	Scale	1:1				
.xx = ± 0.15	Drawn By MXM 11/27'17						