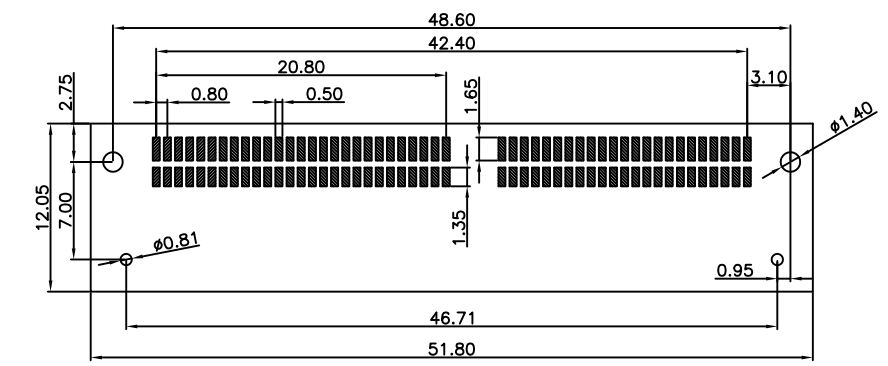
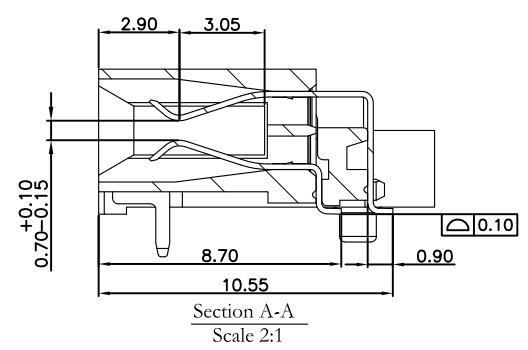
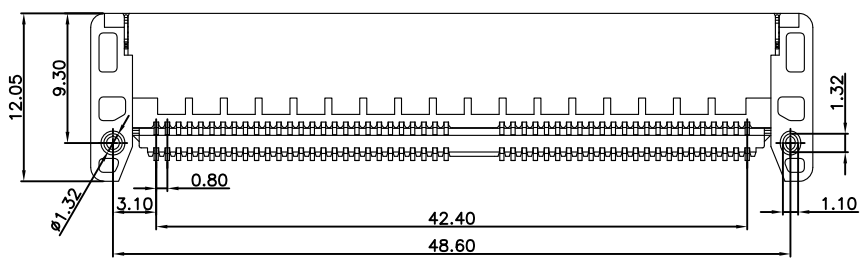
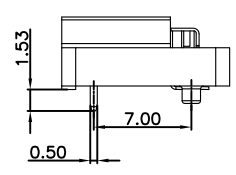
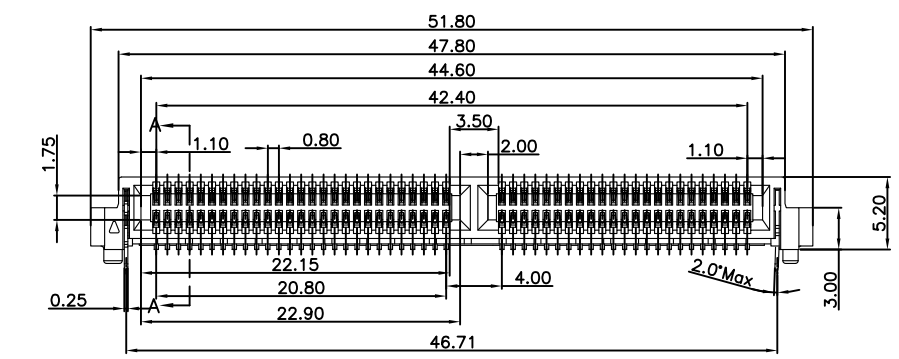


REV.	SPECIFICATION	ECN NO.	APPD.
X2			

**Material and Plating:**  
Housing: LCP,UL94V-0, Black.  
Signal Contacts: Phosphor Bronze.  
Gold Plated on Contact Area and 80u" Min Tin Plated on Solder Tail over nickel 50u" Min .

**Electrical Characteristics:**  
Current Rating: 3.1A .  
Dielectric Withstanding Voltage: AC 600V For 1 minute.  
Insulator Resistance: 6000MΩ min. at DC 250V.  
Contact Resistance: 8.4mΩ max. at DC 100mA.  
Operating Temperature: -55°C~+125°C.

**\*RoHS Compliant**  
Speed:28+Gbps @-3dB.



P.C. Board Layout  
(Tolerance ±0.05)

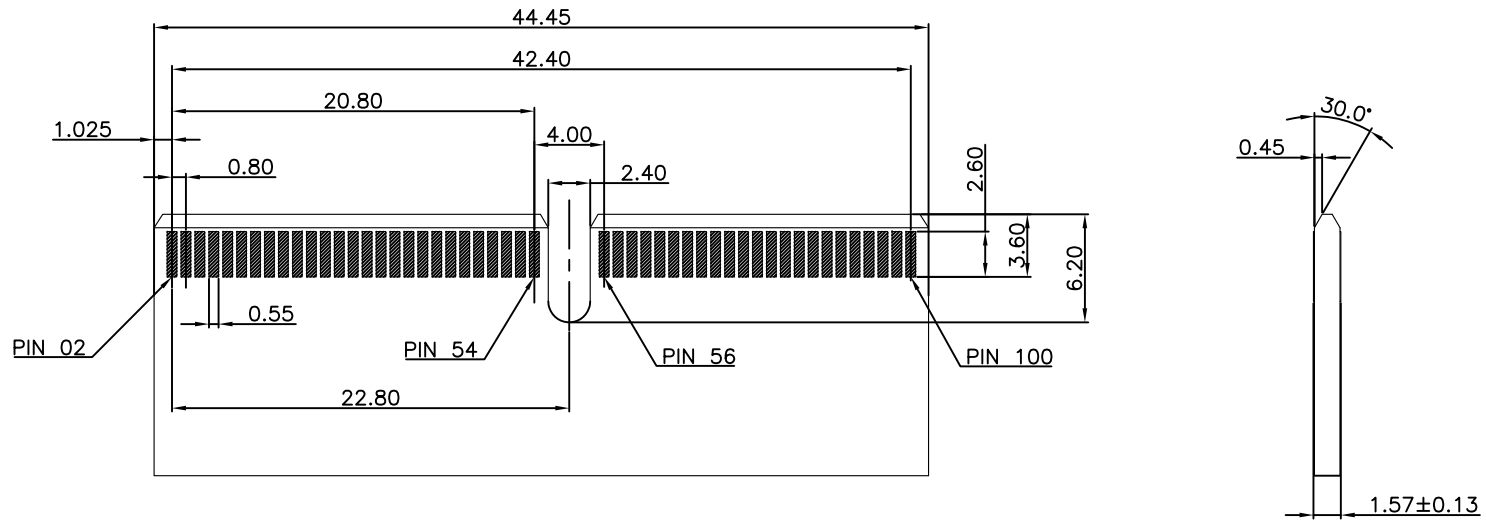
8206- 2 X 50 C 30 R P 1 T

Series ——— 8206-  
Double Row ——— 2 X  
Position Per Row ——— 50  
C: Selective Gold Plated ——— C  
30: 30μ" ——— 30  
R: Right Angle Type ——— R  
P: With Post ——— P  
N: Without Post ——— N  
1: With Front Key ——— 1  
T: Tape&Reel Package ——— T  
U: Tube Package ——— U

Tolerances	Dwg NO.	8206-D0000-026	Title:	
x = ±0.50	Projection		8206 Series Edge Card Connector	
.x = ±0.25	Unit	mm		
.xx = ±0.15	Scale	1:1		
	Drawn By	MXM 11/23'17		

<b>OUPIN</b>			
OUPIN ELECTRONIC(KUNSHAN) CO., LTD.			
P/N: 8206-2X50C30RP1T			
SHEET	1/2	Ver.No.	X2

REV.	SPECIFICATION	ECN NO.	APPD.
X2			



Recommended Matting Board Footprint  
(Tolerance:±0.05)

<b>Tolerances</b>	<b>Dwg NO.</b>	8206-D0000-026		<b>Title:</b>		
x = ±0.50	<b>Projection</b>			8206 Series Edge Card Connector		
.x = ±0.25	<b>Unit</b>	mm	<b>Scale</b>			1:1
.xx = ±0.15	<b>Drawn By</b>	MXM 11/23'17				

<b>OUPIIN</b>			
OUPIIN ELECTRONIC(KUNSHAN) CO., LTD.			
P/N: 8206-2X50C30RP1T			
SHEET	2/2	Ver.No.	X2

SHEET	2/2	Ver.No.	X2
-------	-----	---------	----