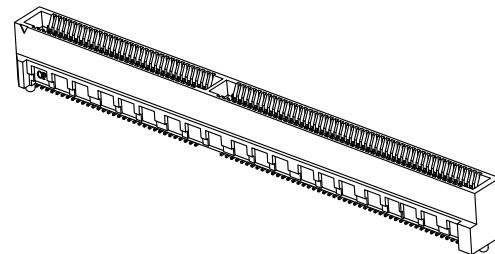


REV.	SPECIFICATION	ECN NO.	APPD.
R2		ECN211035	



Material and Plating:

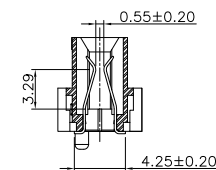
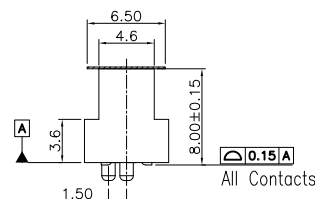
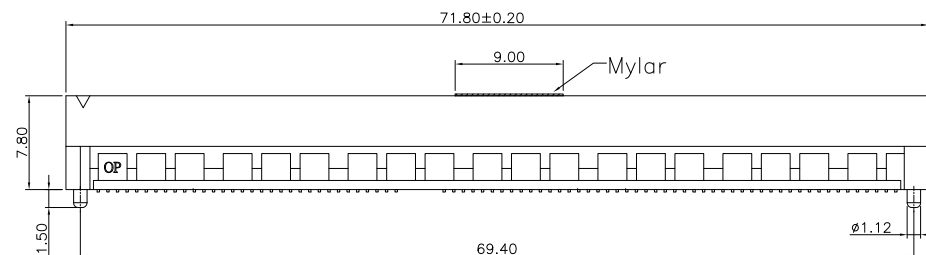
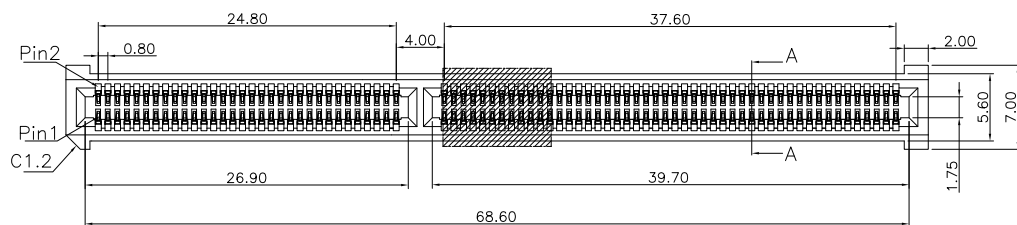
Housing: LCP, UL94V-0, BLACK.
 Signal Contacts: High Performance Copper Alloy.
 Gold plated on Contact Area and 80u" Min Tin Plated on Solder Tail over nickel 50u" Min.

Electrical Characteristics:

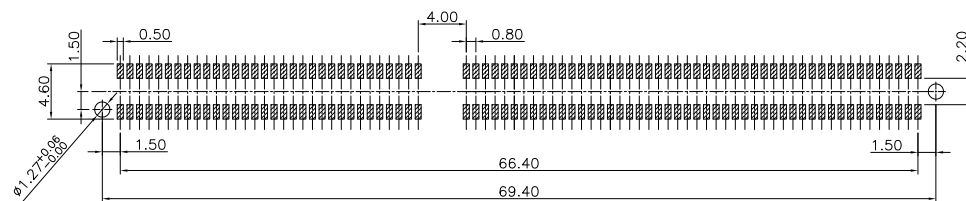
Current Rating: 3.1 AMP.
 Dielectric Withstanding Voltage: AC 600V For 1 minute.
 Insulator Resistance: 6000MΩ min. at DC 250V.
 Contact Resistance: 8.4mΩ max. at DC 100mA.
 Operating Temperature: -55°C~+125°C.

***RoHS Compliant**

Speed: 28+Gbps @-3dB.



Section A-A



P.C. Board Layout
(Tolerance ±0.05)

8206- 2 X 80 C xx D P 1 T - S

Series ———
 Double Row ———
 Position Per Row ———
 C: Selective Gold Plated ———
 10: 10μ"
 30: 30μ"
 D: SMD Type ———

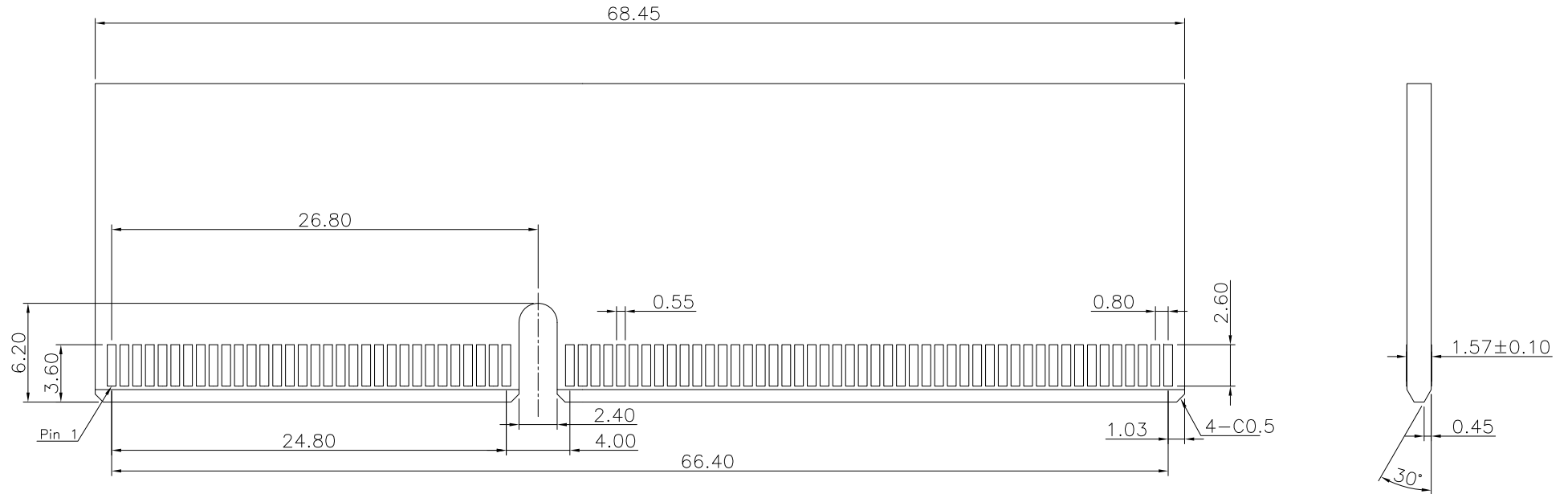
————— S: Mylar
 ——— P: Plastic Pad
 ——— T: Tape&Reel Package
 ——— U: Tube Package
 ——— 1: With Front Key
 ——— P: With Post
 ——— N: Without Post

Tolerances	Dwg. No.	8206-D0000-023	Title:	
x = ±0.50	Projection		8206 Series	
.x = ±0.25	Unit	mm	Scale	1:1
.xx = ±0.15	Drawn By	ZY 10/22'21	Edge Card Connector	
			0.80mm (0.0315") Pitch SMD Type	


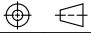
Title:			
8206 Series			
Edge Card Connector			
0.80mm (0.0315") Pitch SMD Type			

OUPIN ELECTRONIC(KUNSHAN) CO., LTD.			
P/N: 8206-2X80CxxDP1T-S			
SHEET	1/2	Ver.No.	R2

REV.	SPECIFICATION	ECN NO.	APPD.
R2		ECN211035	



RECOMMENDED MATTING BOARD FOOTPRINT
(Tolerance: ±0.05)

Tolerances x = ±0.50 .x = ±0.25 .xx = ±0.15	Dwg.No.	8206-D0000-023		Title:		 OUPIIN ELECTRONIC(KUNSHAN) CO., LTD.			
	Projection			8206 Series Edge Card Connector 0.80mm (0.0315") Pitch SMD Type		P/N: 8206-2X80CxxDP1T-S			
	Unit	mm	Scale	1:1			SHEET	2/2	Ver.No.
	Drawn By	ZY 10/22'21							