

REV.	SPECIFICATION	ECN NO.	APPD.
R3			

**Material:**

Housing: High Temperature Plastic UL94V-0.  
 Power Contacts: Copper Alloy.  
 Signal Contacts: Copper Alloy.

**Electrical Characteristics:**

Current Rating:  
 Power: 35AMP (2oz\*2), 45AMP (2oz\*4), Signal: 1AMP.

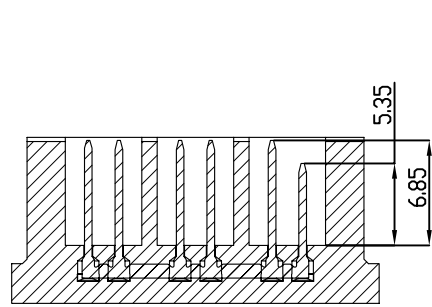
Dielectric Withstanding Voltage:  
 Power: AC 1500V For 1 minute.  
 Signal: AC 750V For 1 minute.

Insulator Resistance: Power: 1500MΩ min. at DC 500V.  
 Signal: 1000MΩ min. at DC 500V.

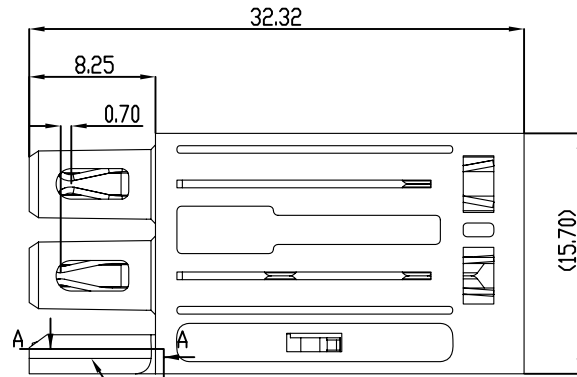
Contact Resistance: Power: 0.5mΩ max.  
 Signal: 30mΩ max.

Operating Temperature: -55°C ~ +125°C.

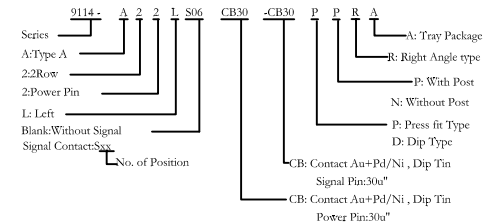
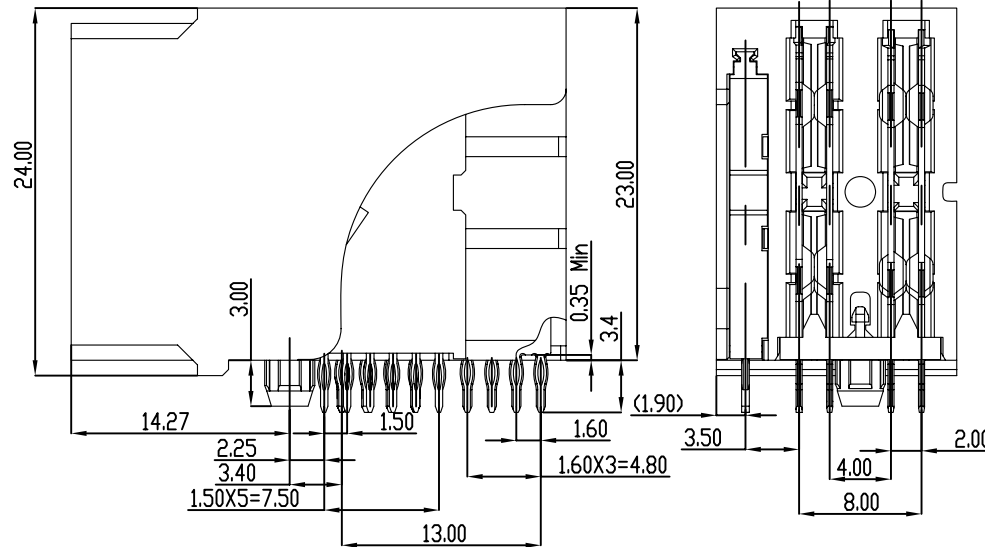
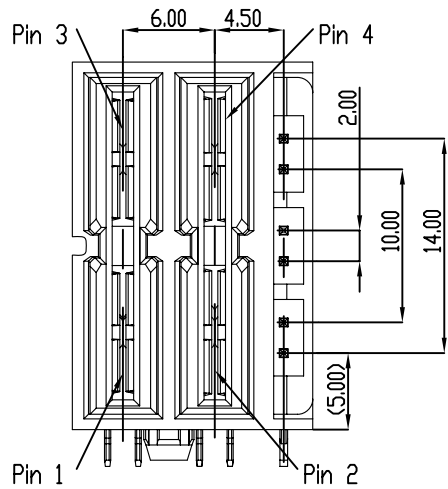
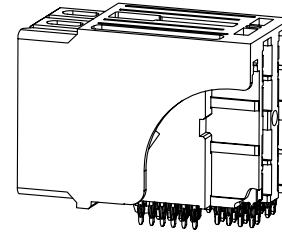
**\*RoHS Compliant**



剖面 A-A  
比例 1:1



Signal pin on the left



Long PIN   
 Short PIN

Type No	Product No.
	(A Type) 9114-A22LS06CB30-CB30PPRA
	(B Type) 9114-B22LS06CB30-CB30PPRA

Tolerances	Dwg.No.	9114-D0000-005	Title:	
X=±0.50	Projection		9114 Series	
.X=±0.25	Unit	mm	Female Power+Signal Connector	
.XX=±0.15	Scale	1:1		
	Drawn By	LX 03/27'14		

<b>DUPIIN</b>			
DUPIIN ELECTRONIC(KUNSHAN) CO., LTD.			
P/N: 9114-A22LS06CB30-CB30PPRA			
SHEET	1/2	Ver.No.	R3

REV.	SPECIFICATION	ECN NO.	APPD.
R3			

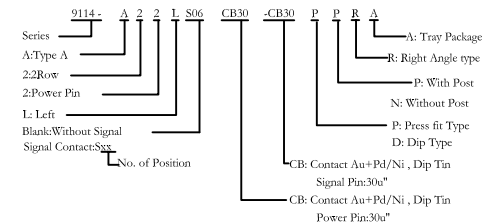
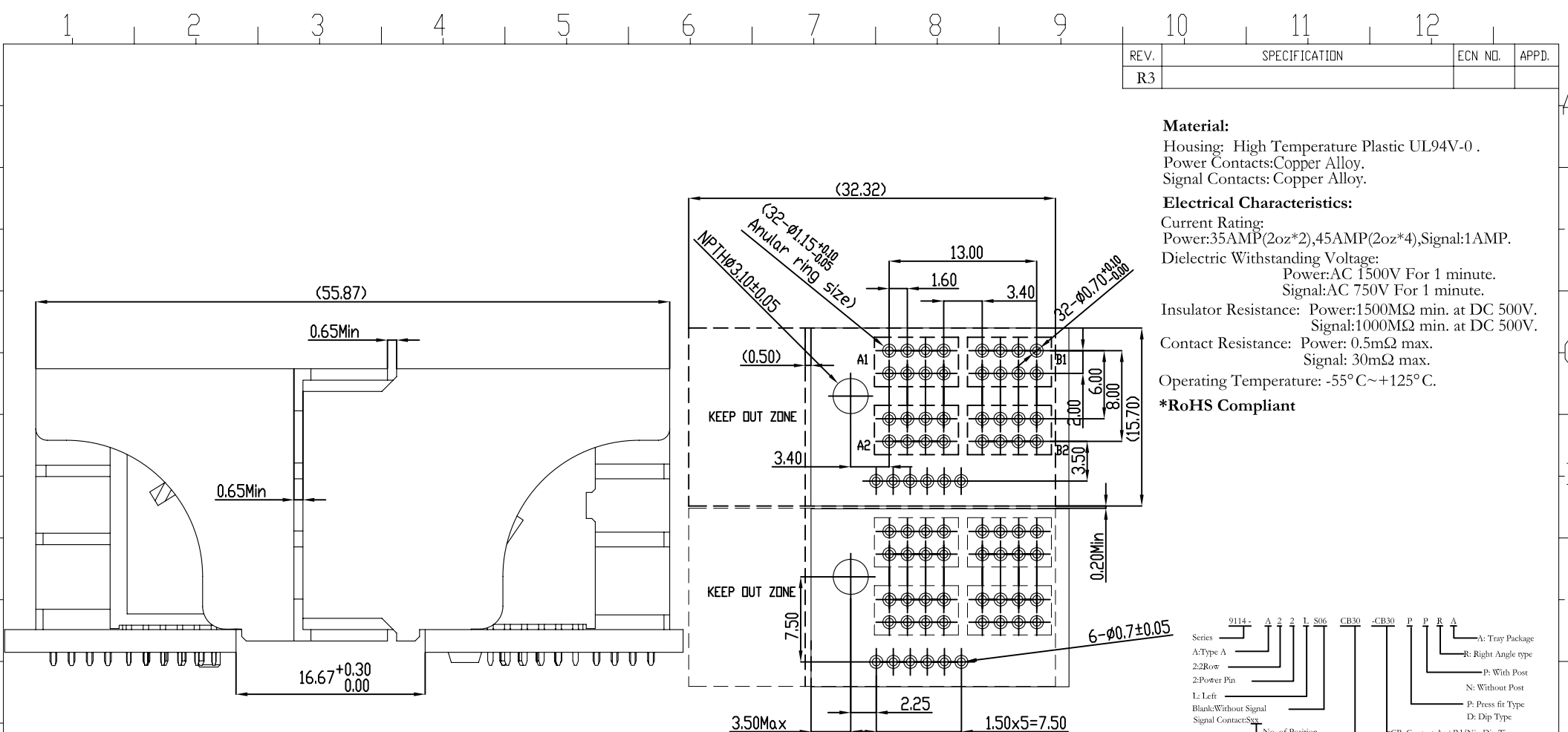
**Material:**

Housing: High Temperature Plastic UL94V-0.  
 Power Contacts: Copper Alloy.  
 Signal Contacts: Copper Alloy.

**Electrical Characteristics:**

Current Rating:  
 Power: 35AMP (2oz\*2), 45AMP (2oz\*4), Signal: 1AMP.  
 Dielectric Withstanding Voltage:  
 Power: AC 1500V For 1 minute.  
 Signal: AC 750V For 1 minute.  
 Insulator Resistance: Power: 1500MΩ min. at DC 500V.  
 Signal: 1000MΩ min. at DC 500V.  
 Contact Resistance: Power: 0.5mΩ max.  
 Signal: 30mΩ max.  
 Operating Temperature: -55°C ~ +125°C.

**\*RoHS Compliant**



Long PIN   
 Short PIN

Type No	Product No.
	(A Type) 9114-A22LS06CB30-CB30PPRA
	(B Type) 9114-B22LS06CB30-CB30PPRA

Tolerances	Dwg.No.	9114-D0000-005	
X=±0.50	Projection		
.X=±0.25	Unit	mm	Scale 1:1
.XX=±0.15	Drawn By	LX 03/27'14	

Title:  
 9114 Series  
 Female Power+Signal Connector

<b>DUPIIN</b>			
DUPIIN ELECTRONIC(KUNSHAN) CO., LTD.			
P/N: 9114-A22LS06CB30-CB30PPRA			
SHEET	2/2	Ver.No.	R3