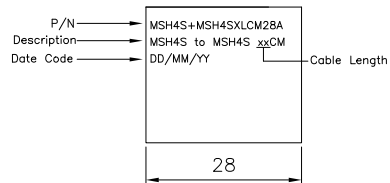
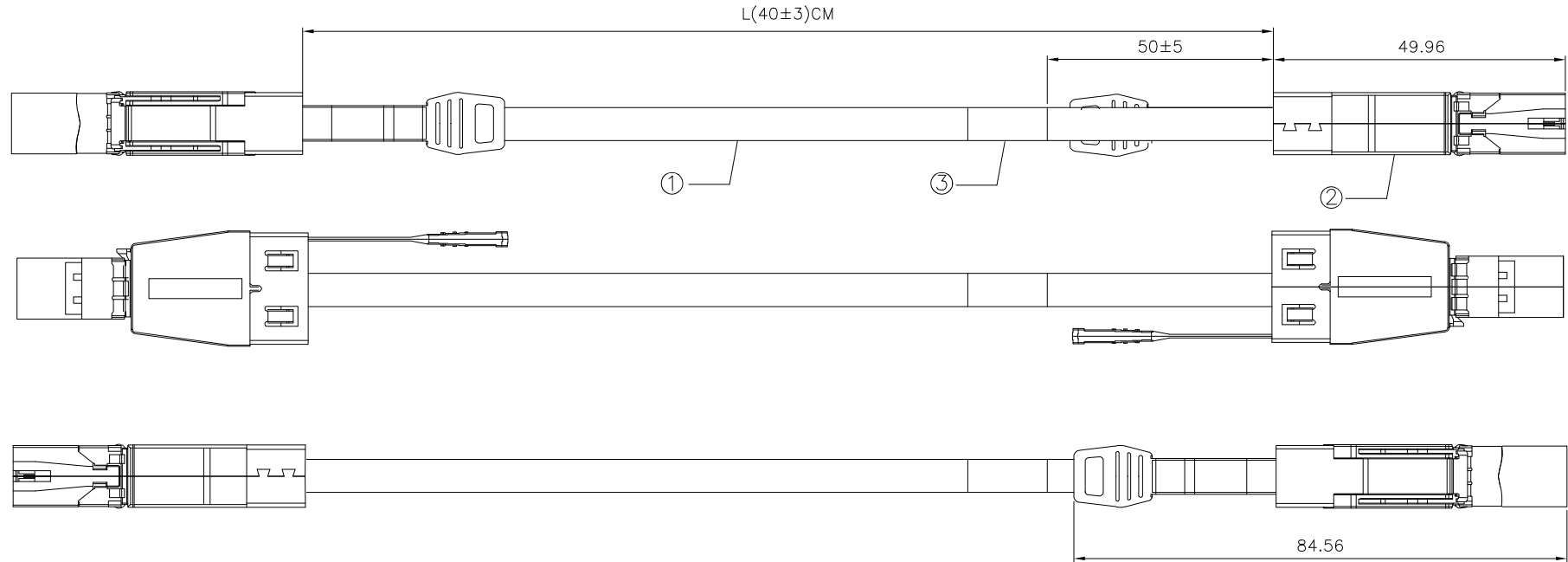


Part List

| | |
|-----------------|--|
| 1 | Twin-ax 30AWGX8Pair+30AWGX8C Cable 85ohm, Black, UL Approved. |
| 2 | SFF 8644 HD 4i 36Pin Cable End PCBA Kit (30u”), W/Blue Pull Tab. |
| 3 | Lable W=28mm, Black Text & White Ground |
| *RoHS Compliant | |

NOTE:

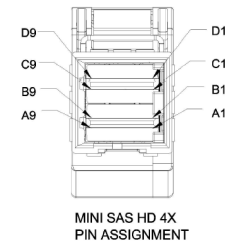
- 1.The Cable si requirement Meet Pcie 4.0 Standard
- 2.The Cable Assembly Shall Meet Below Impedance Requirement:
 Mated Impedance: 85±5% Ohms@Rise Time:70ps (20%~80%)
 Cable Impedance: 85±10% Ohms@Rise Time:70ps (20%~80%)



LABEL DETAIL

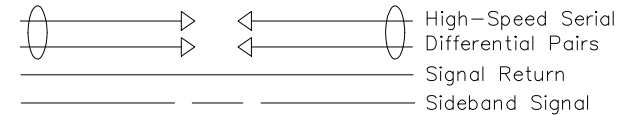
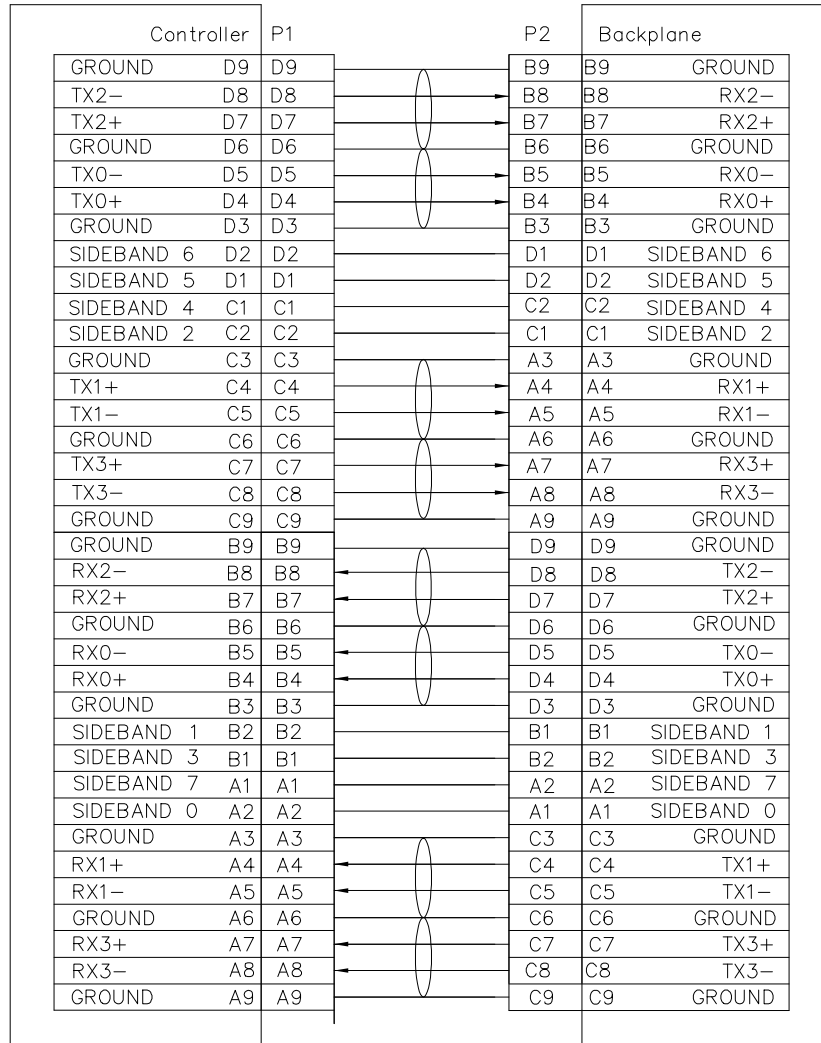
MSH4S + MSH4S X L CM 30A 12G

MiniSAS HD,4i STR ———— 12G
 MiniSAS HD,4i STR ———— 30: 30 AWG
 L: Cable Length



| | | | | | | | | |
|--------------|------------|-----------------|-------|-----------------------|------------------------------------|---|--|--|
| Tolerances | Dwg. No. | S2320220621-01 | | Part No. | OUPIIN ENTERPRISE CO., LTD. | | | |
| .x = ±0.30 | Projection | ⊕ ◀ | | MSH4S+MSH4SXLCM30A12G | | | | |
| .xx = ±0.20 | Unit | mm | Scale | 1:N | | Title: MiniSAS HD,4i STR CABLE SHEET 1/2 Ver.No. X1 | | |
| .xxx = ±0.10 | Drawn By | Martin 06/21'22 | | ①517 | | | | |

WIRING TABLE



| | | | | | | | | |
|--------------|------------|----------------|----------|--|--|--|--|--|
| Tolerances | Dwg. No. | S2320220621-01 | | Part No. | OUPIIN ENTERPRISE CO., LTD. SHEET 2/2 Ver.No. X1 | | | |
| .x = ±0.30 | Projection | | | MSH4S+MSH4SXLCM30A12G | | | | |
| .xx = ±0.20 | Unit | mm | Scale | 1:N | | | | |
| .xxx = ±0.10 | Drawn By | Martin | 06/21'22 | Title: MiniSAS HD,4i STR CABLE ①517 | | | | |