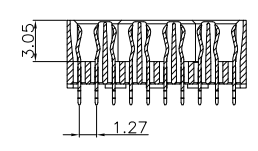
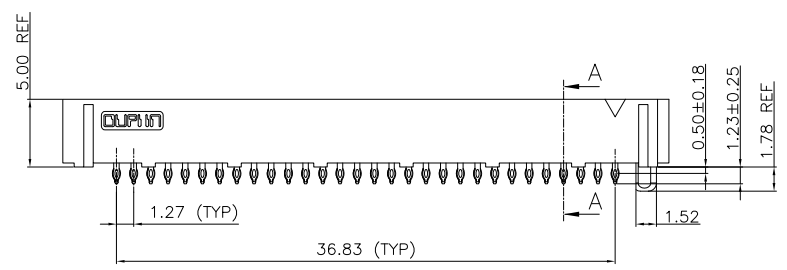
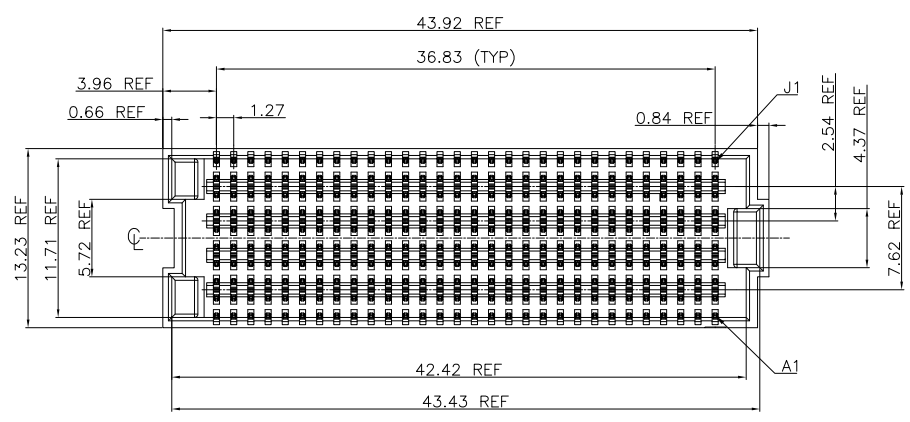
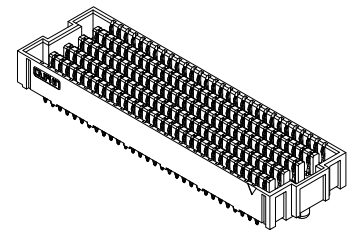


REV.	SPECIFICATION	ECN NO.	APPD.
R3		ECN211227	

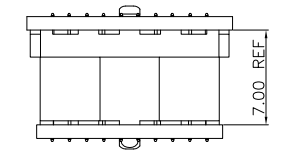
Material and Plating:
Housing: LCP, UL94V-0, Black.
Signal Contacts :High Performance Copper Alloy.
30u" Au+Pd/Ni on Contact Area and 80u" Min Tin Plated on Press Fit over nickel 50u" Min .

Electrical Characteristics:
Current Rating: Signal Pin: 2.7A.
Voltage Rating: 240V AC .
Dielectric Withstanding Voltage: 500V AC For 1 minute.
Insulator Resistance: 5000MΩ min at DC 500V.
Contact Resistance: Signal: 10mΩ max .
Operating Temperature: -55°C ~ +125°C .

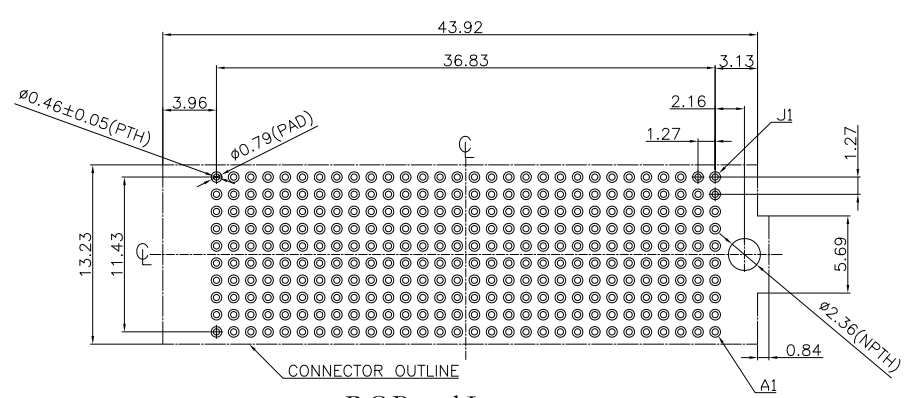
***RoHS Compliant**



SECTION A-A
Scale 1:1



Mating Height



P.C.Board Layout
(Tolerance:±0.05)

2322- 10 X 30 F B 7 P P 1 A
Series ————
Row ————
Position Per Row ————
F: Female
B: Dip Tin Plated Contact Au+Pd/Ni Plated
7: 30μ"
A: Tray Package
1: Code 1 height 5.00mm
N: W/O Post
P: With Post
P: Press Fit Type

Tolerances	Dwg. No.	2322-D0000-001	Title:		 OUPIN ELECTRONIC(KUNSHAN) CO., LTD. P/N: 2322-10X30FB7PP1A SHEET 1/1 Ver. No. R3			
x = ±0.5	Projection		2322 Series					
.x = ±0.25	Unit	mm	Scale	1:1	High Speed Board to Board			
.xx = ±0.15	Drawn By	WP 12/21'21	Pitch 1.27mm					