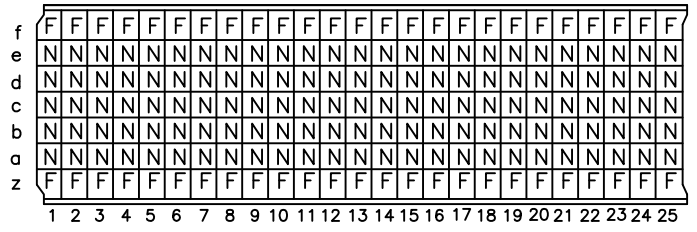
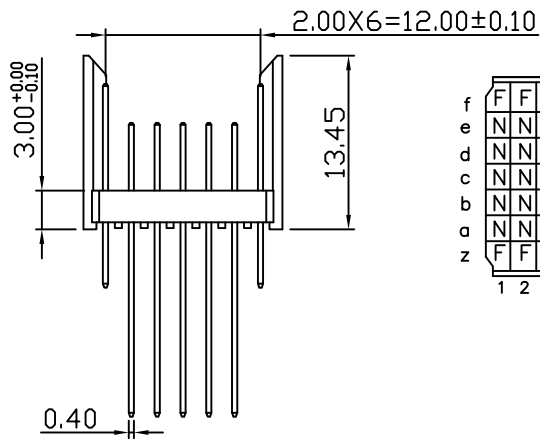
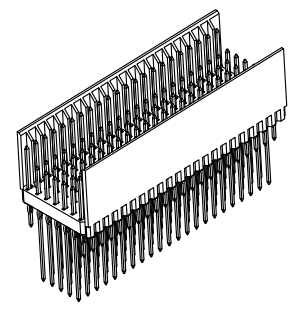


REV.	SPECIFICATION	ECN NO.	APPD.
R1			

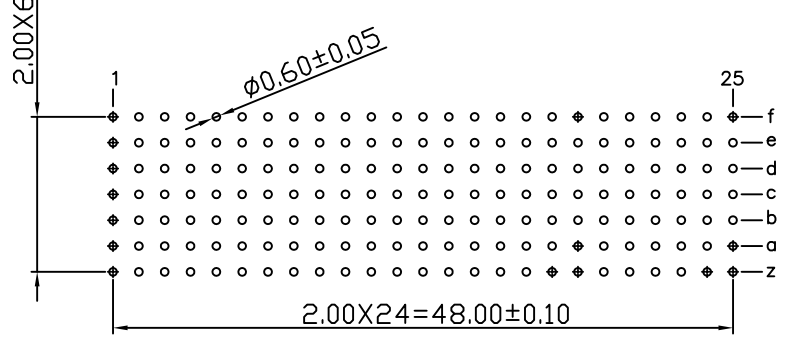
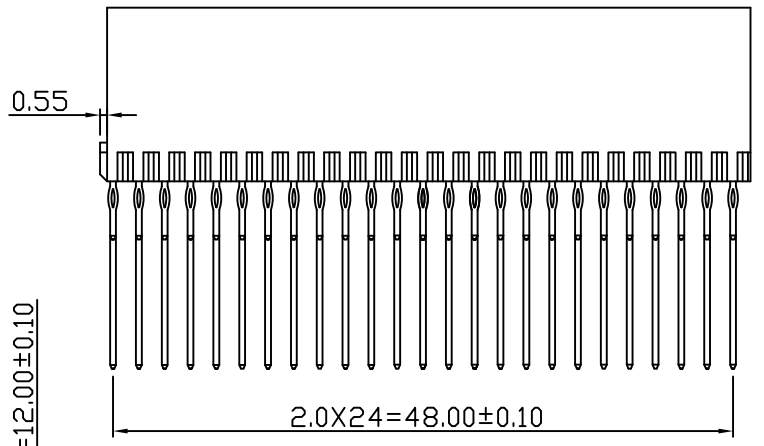
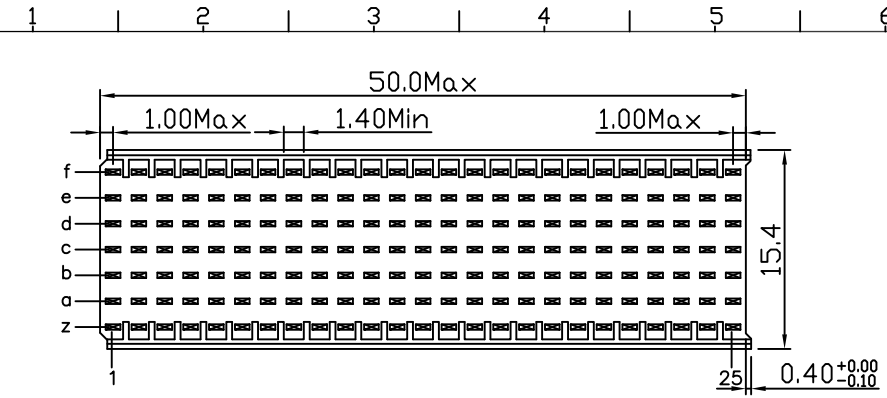
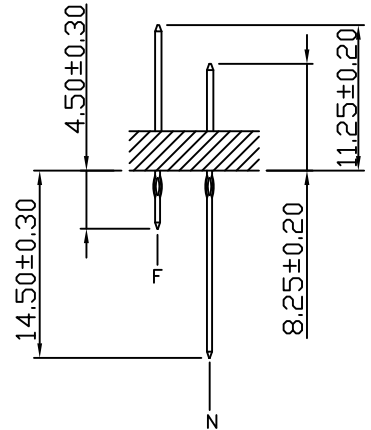
Material:
Housing: Thermoplastic Polyester Glass Filled UL94V-0
Contacts: Copper Alloy.

Electrical Characteristics:
Current Rating: 1 AMP.
Dielectric Withstanding Voltage: AC 750V For 1 minute.
Insulator Resistance: 10000MΩ min.at DC 500V.
Contact Resistance: 20mΩ max.at DC 100mA.
Operating Temperature: -55°C ~ +125°C.

***RoHS Compliant**



CONTACT LAYOUT



P.C. Board Layout
(Top View)

9111- 7 1 B 175 W C xx U
Series 7Row 1: Male B: Type B Housing Type W: W Option U: Tube Package 10: 10 u" 30: 30 u" C: Dip Tin Contact Gold G: Gold

Tolerances	Dwg. No.	9111D71122	
x = ±0.5	Projection	⊕ ⊖	
.x = ±0.25	Unit	mm	Scale 1:1
.xx = ±0.15	Drawn By	Zhu QL 08/15'12	

Title: 9111 Series
2.00 Hard Metric
Connectors Male
Type B-25

OUPIN			
OUPIN ELECTRONIC(KUNSHAN) CO., LTD.			
P/N: 9111-71B175WCxxU			
SHEET	1/1	Ver.No.	R1