

REV.	SPECIFICATION	ECN NO.	APPD.
R2		ECN190726	

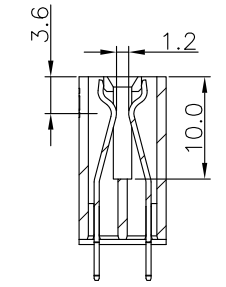
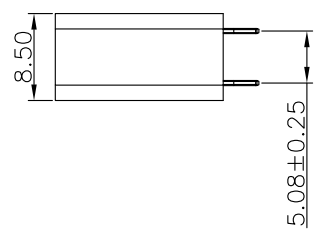
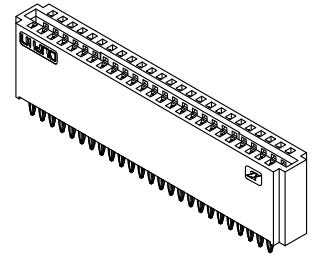
Material and Plating:

Housing: LCP, UL94V-0, BLACK.
 Power Contacts: High Conductivity Copper .
 30u" Au+Pd/Ni on Contact Area and 80u" Min Tin Plated on Press Fit over nickel 50u" Min .

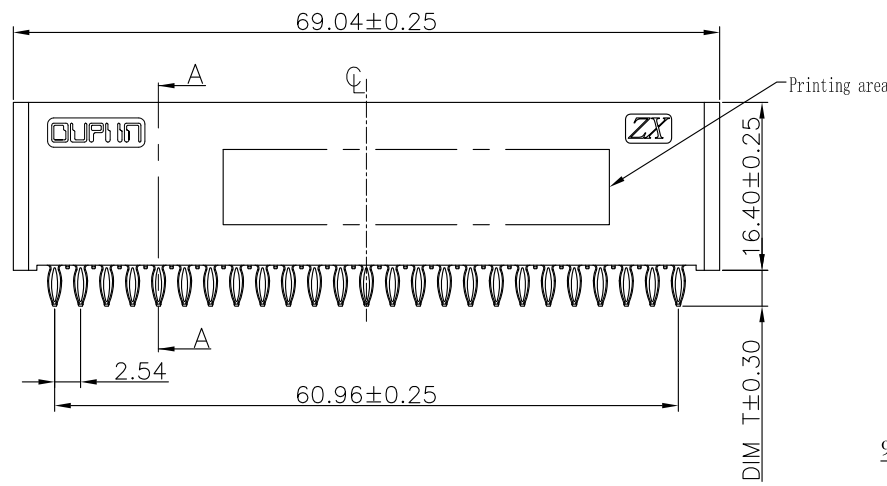
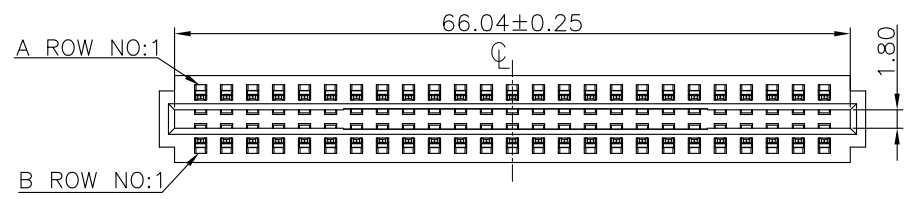
Electrical Characteristics:

Current Rating: 10 A per contact with Adjacent contact
 Dielectric Withstanding Voltage: DC 1000V For 1 minute.
 Insulator Resistance: 5000MΩ min. at DC 500V.
 Contact Resistance: 2.5mΩ max. at DC 100mA.
 Operating Temperature: -5°C ~+105°C .

***RoHS Compliant**



SECTION A-A

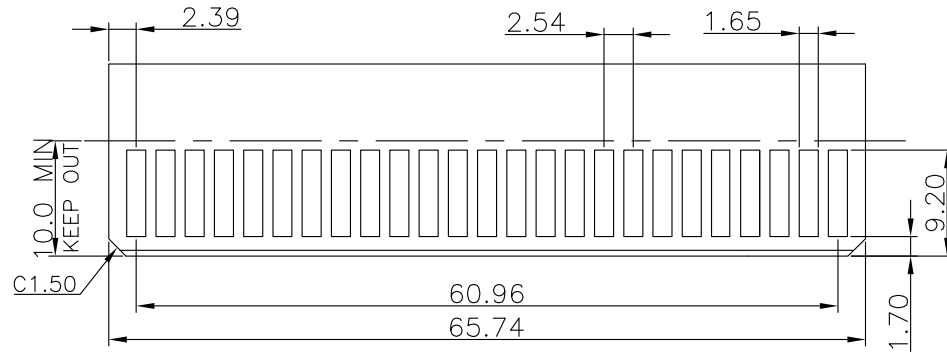


- 9393-F 2 P50 N 1 1 A CB30 P A -A004
- Series
- 2:Female Straight
- Position
- N:W/O Post
- P:With Post
- 1:DIM T=3.5mm
- 2:DIM T=2.8mm
- 3:DIM T=5.0mm
- Internal Code
- A: Tray Package
- P:Press-Fit Type
- CB30:Contact Au+Pd/Ni,Dip Tin
- 30: 30u"
- A:Power pitch 2.54
- B:Power pitch 5.08
- 1:DIM G(GAP)=1.2mm

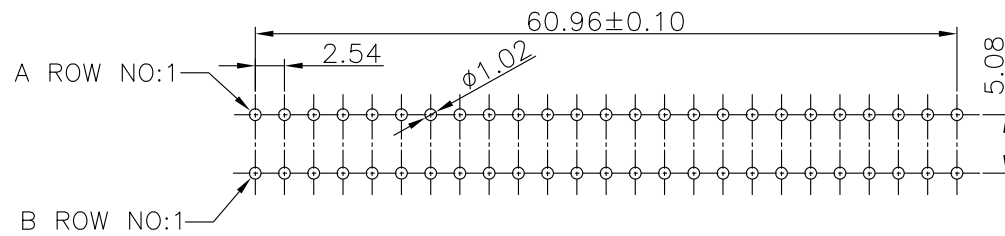
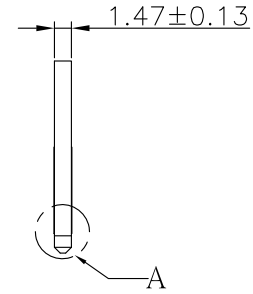
Tolerances	Dwg. No.	9393-D0000-060	Title:	
x = ±0.5	Projection		9393-F Series	
.x = ±0.25	Unit	mm	Scale	1:1
.xx = ±0.15	Drawn By	GYJ 07/26'19	Power Edge Connector	

OUPIIN ELECTRONIC(KUNSHAN) CO., LTD.			
P/N: 9393-F2P50N11ACB30PA-A004			
SHEET	1/2	Ver. No.	R2

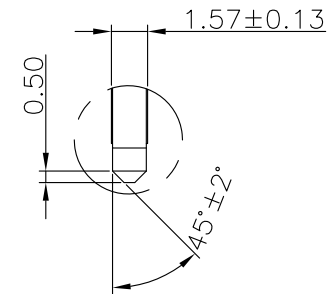
REV.	SPECIFICATION	ECN NO.	APPD.
R2		ECN190726	



RECOMMENDED MATTING BOARD FOOTPRINT
Copper spreading 2oz*6 Layers (Tolerance:±0.05)



P.C. Board Layout
(Tolerance:±0.05)



DETAIL: A-A
SCALE :2:1

Tolerances	Dwg. No.	9393-D0000-060		Title:		
x = ±0.5	Projection			9393-F Series Power Edge Connector		
.x = ±0.25	Unit	mm	Scale			1:1
.xx = ±0.15	Drawn By	GYJ 07/26'19				

OUPIIN ELECTRONIC(KUNSHAN) CO., LTD.			
P/N: 9393-F2P50N11ACB30PA-A004			
SHEET	2/2	Ver. No.	R2