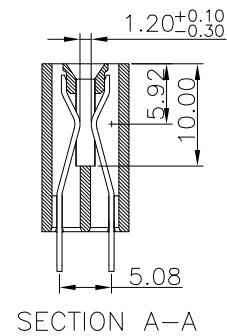
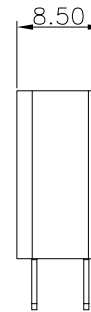
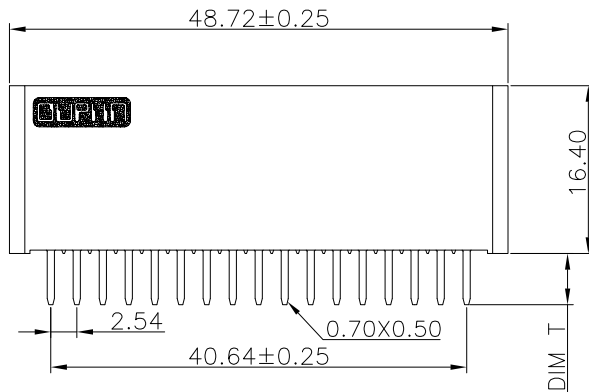
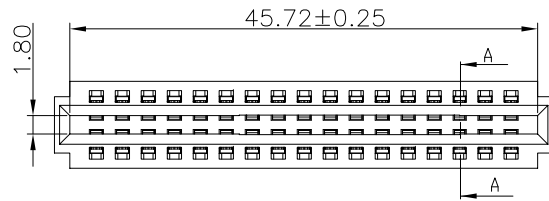


REV.	SPECIFICATION	ECN NO.	APPD.
X2			



9393-F 2 P34 N x 1 A CB30 D A

Series
 2:Female Straight
 Position
 N:W/O Post
 P:With Post
 1:DIM T=3.5mm
 2:DIM T=2.8mm
 3:DIM T=5.0mm
 1:DIM G(GAP)=1.2mm

A: Tray Package
 D:Dip Type
 P:Press-Fit Type
 CB30:Contact Au+Pd/Ni,Dip Tin
 30: 30u"
 A:Power pitch 2.54
 B:Power pitch 5.08

Material and Plating:

Housing:LCP, 30% Glass Filled,UL94V-0 , BLACK.
 Power Contacts:High Conductivity Copper .
 Au(3u")+Pd/Ni (27u") gold plated on Contact Area and 80u" Min Tin Plated on Solder Tail over nickel 50u" Min under plated .

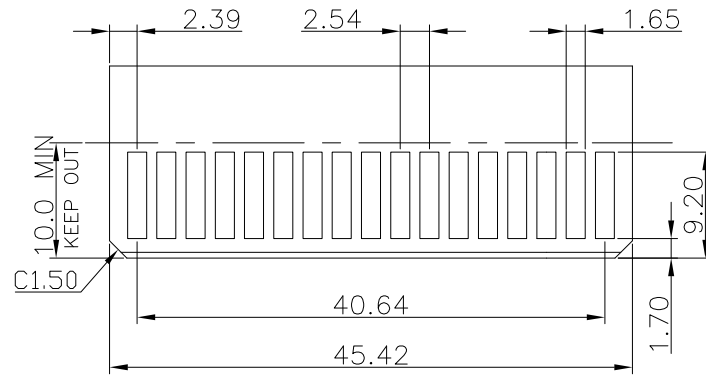
Electrical Characteristics:

Current Rating: 12.5 A(UL).
 Dielectric Withstanding Voltage:DC 1000V For 1 minute.
 Insulator Resistance: 5000MΩ min. at DC 500V.
 Contact Resistance: 10mΩ max. at DC 100mA.
 Operating Temperature: -5°C ~+105°C .

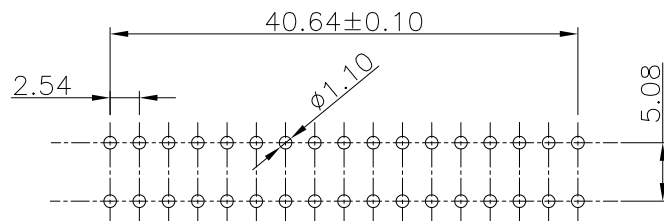
***RoHS Compliant**

Tolerances	Dwg. No.	9393-D0000-023	Title:		OUPIN OUPIN ELECTRONIC(KUNSHAN) CO., LTD. P/N: 9393-F2P34Nx1ACB30DA			
x = ±0.5	Projection		9393-F Series					
.x = ±0.25	Unit	mm	Scale	1:1				
.xx = ±0.15	Drawn By	LQ06/01'16						

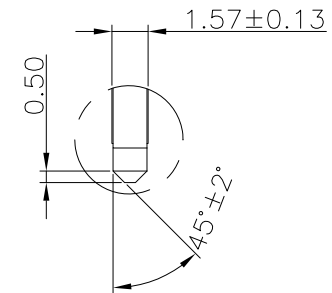
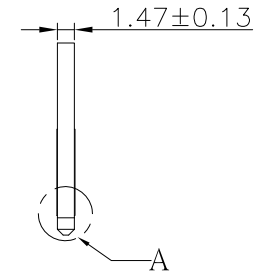
REV.	SPECIFICATION	ECN NO.	APPD.
X2			




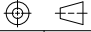
RECOMMENDED MATTING BOARD FOOTPRINT
(Tolerance:±0.05)



P.C. Board Layout
(Tolerance:±0.05)



DETAIL: A-A
SCALE :2:1

Tolerances	Dwg. No.	9393-D0000-023	Title:		 OUPIIN ELECTRONIC(KUNSHAN) CO., LTD. P/N: 9393-F2P34N×1ACB30DA				
x = ±0.5	Projection		9393-F Series						
.x = ±0.25	Unit	mm	Scale	1:1	SHEET		2/2	Ver. No.	X2
.xx = ±0.15	Drawn By	LQ06/01'16							