

REV.	SPECIFICATION	ECN NO.	APPD.
R2		ECN231036	

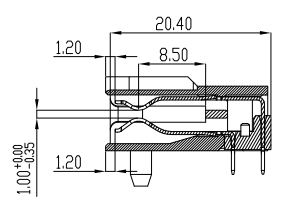
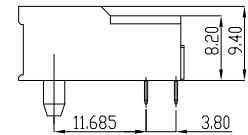
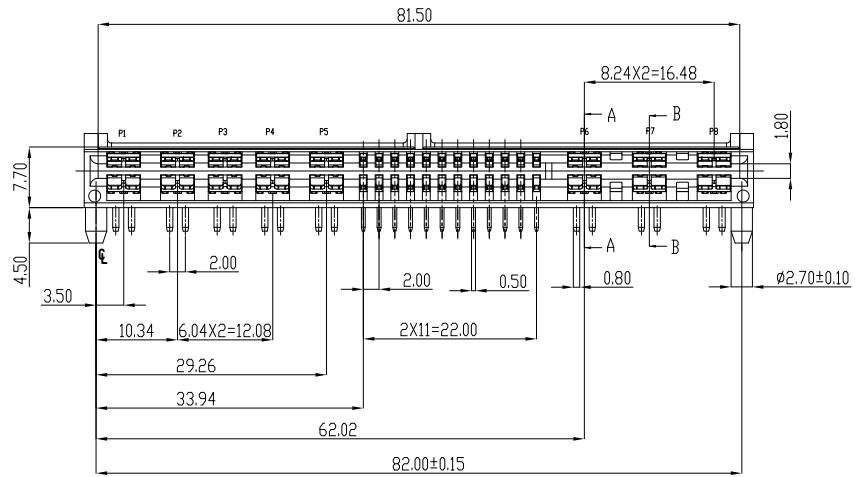
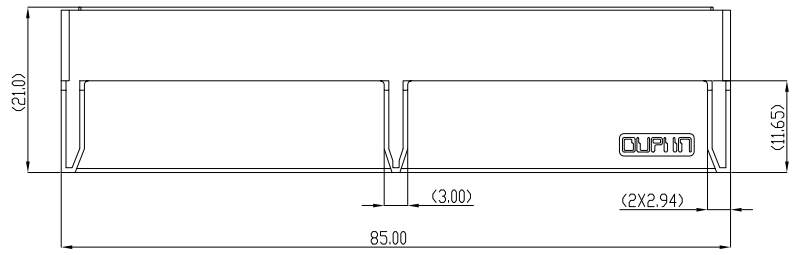
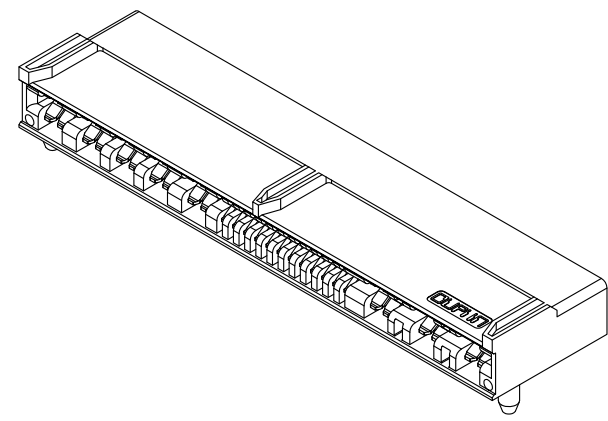
Material and Plating:

Housing: LCP, UL94V-0, Black.
 Cover: LCP, UL94V-0, Black.
 Power Contacts: High Conductivity Copper.
 30u" Au+Pd/Ni on Contact Area and 80u" Min
 Tin Plated on Solder Tail over 50u" Min Nickel.
 Signal Contacts: Phosphor Bronze.
 30u" Au+Pd/Ni on Contact Area and 80u" Min
 Tin Plated on Solder Tail over 50u" Min Nickel.

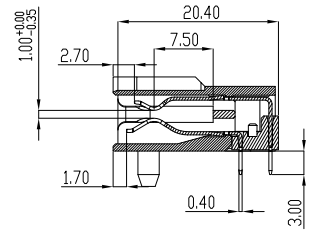
Electrical Characteristics:

Current Rating: 1 AMP/Signal pin.
 18 AMP/AC Power pin(UL) .
 90 AMP/DC Power pin(UL).
 Dielectric Withstanding Voltage: DC Power: 1500V For 1 minute.
 AC Power: 2000V For 1 minute.
 Signal Pin : 1000V For 1 minute.
 Insulator Resistance: Power:5000MΩ min.
 Signal:500MΩ min.
 Contact Resistance: DC Power pin : 1mΩ max.
 AC Power pin : 5mΩ max.
 Signal pin : 25mΩ max.
 Operating Temperature: -40°C ~+115°C .

***RoHS Compliant**



Section:A-A
Scale:1:1



Section:B-B
Scale:1:1

RDWS	DC POWER					SIGNAL					AC POWER		
	P1	P2	P3	P4	P5						P6	P7	P8
B	PL	PL	PL	PL	PL						PL	PS	PS
A	PL	PL	PL	PL	PL						PL	PS	PS

POWER CONTACT TO THE A FACE DISTANCE 7.5mm.	PS
POWER CONTACT TO THE A FACE DISTANCE 8.5mm.	PL
SIGNAL CONTACT TO THE A FACE DISTANCE 8.5mm.	L

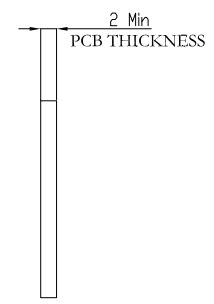
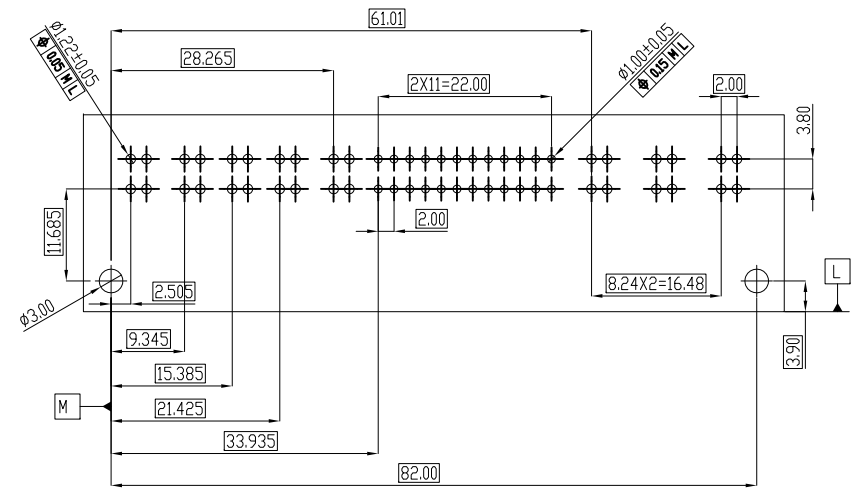
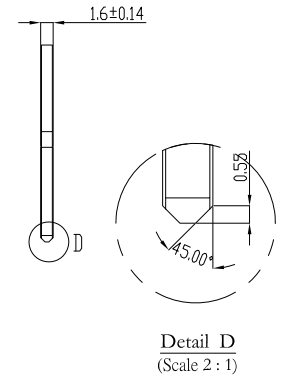
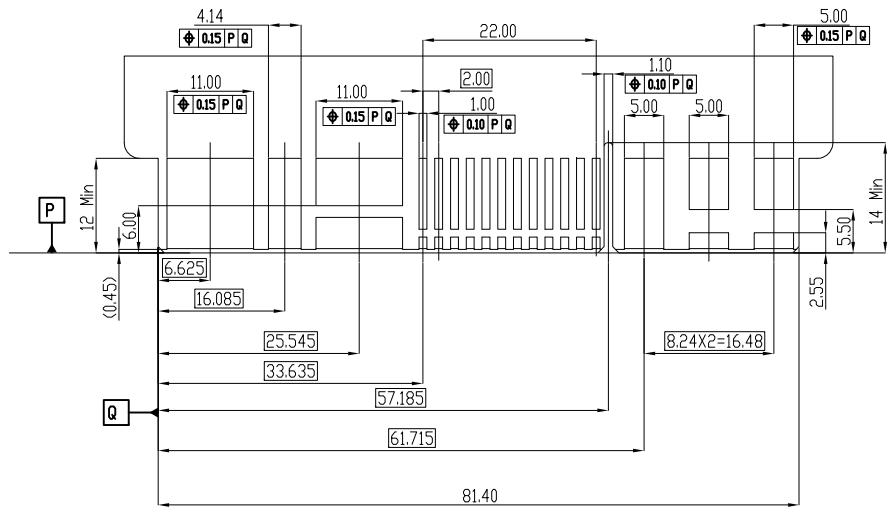
9394- 4 A1 P 1 1 A CB 30 D A
 Series
 4:Female -Right Angle
 A1:Type A1
 See Table
 P:With Post:4.5mm
 DIM T=3.5mm
 DIM GAP=1.0mm
 A:Tray Package
 D: Dip Type
 30: 30 u"
 CB: Contact Au+Pd/Ni,Dip Tin
 C: Selective Gold Plated
 G: Gold Plated
 A:Signal Pitch 2.0mm
 B:Signal Pitch 2.54mm
 1:W/O Left Key,With Right Key

Tolerances	Dwg. No.	9394-D0000-013	
x.=±0.50 .x=±0.25 .xx=±0.15 .xxx=±0.10	Projection		
	Unit	mm	Scale 1:1
	Drawn By	GYJ 11/02'23	

Title:
 9394 Series
 HYBRID POWER
 CARD EDGE DIP TYPE
 LOW PROFILE

OUPIN			
OUPIN ELECTRONIC(KUNSHAN) CO., LTD.			
P/N: 9394-4A1P111ACB30DA			
SHEET	1/2	Ver. No.	R2

REV.	SPECIFICATION	ECN NO.	APPD.
R2		ECN231036	



P.C Board Layout
(Tolerance: ± 0.05)

Tolerances	Dwg. No.	9394-D0000-013	
x.= ± 0.50	Projection		
.x= ± 0.25	Unit	mm	Scale 1:1
.xx= ± 0.15	Drawn By	GYJ 11/02'23	
.xxx= ± 0.10			

Title:
9394 Series
HYBRID POWER
CARD EDGE DIP TYPE
LOW PROFILE

OUPIN			
OUPIN ELECTRONIC(KUNSHAN) CO., LTD.			
P/N: 9394-4A1P111ACB30DA			
SHEET	2/2	Ver.No.	R2