

REV.	SPECIFICATION	ECN NO.	APPD.
R2		ECN220326	

Material and Plating:

Housing:LCP, UL94V-0, BLACK.
 Power Contacts:High Conductivity Copper.
 5u"gold plated on Contact Area and 80u" min Tin
 Plated on Solder Tail over nickel 50u" min .

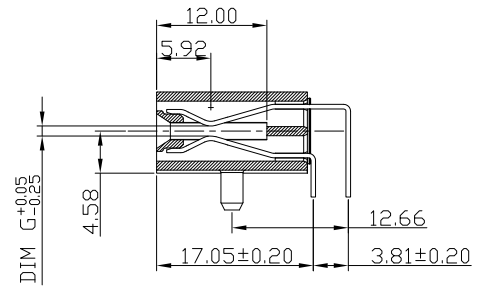
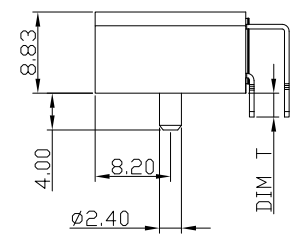
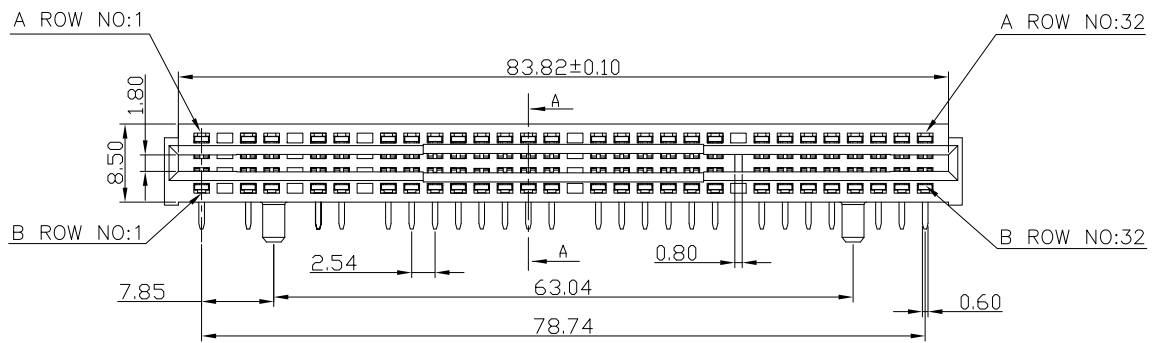
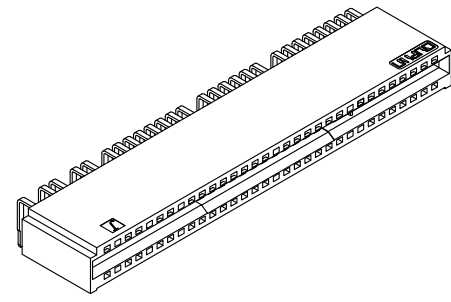
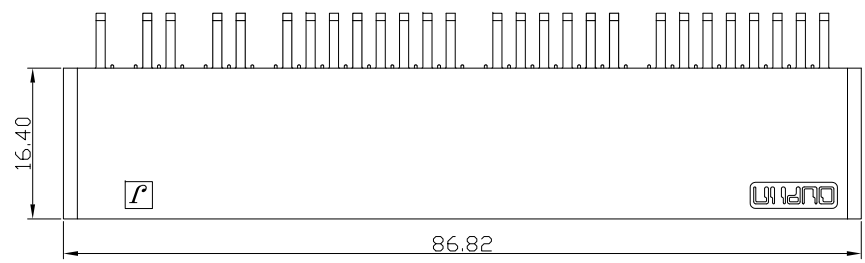
Electrical Characteristics:

Current Rating: UL Certified 12.5A, UL/CSA certified 7A.
 Dielectric Withstanding Voltage: AC 1000V For 1 minute.
 Insulator Resistance: 5000MΩ min. at DC 500V.
 Contact Resistance: 2.5mΩ max. at DC 100mA.
 Operating Temperature: -55°C ~+105°C .

***RoHS Compliant**

Note:

A2/B2,A5/B5,A8/B8,A17/B17,A24/B24 Without Contact
 and pin24 with key.



SECTION A-A

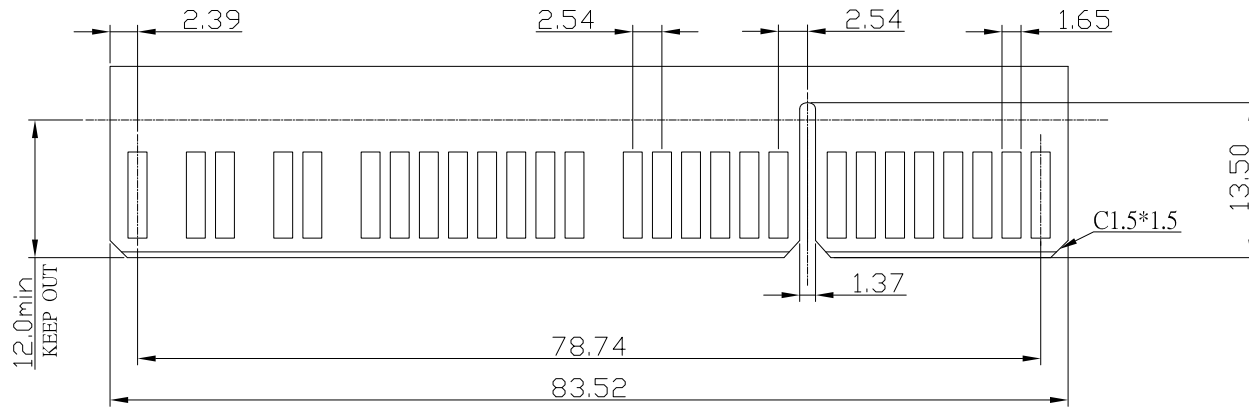
9393-J 4 1 P64 P 2 1 A C05 D A -A007

- Series
- 4:Female-Right Angle
- 1:Row Spacing 3.81
- Position
- P:With Post
- 1:DIM T=3.5mm
- 2:DIM T=2.6mm
- 1:DIM G(GAP)=1.2mm
- Internal Code
- A: Tray Package
- D:Dip Type
- P:Press-Fit Type
- C: Selective Gold Plated
- 05: 05u"
- A:Power pitch 2.54
- B:Power pitch 5.08

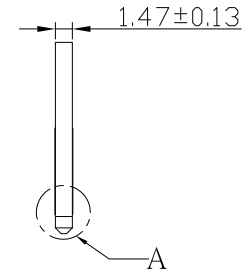
Tolerances	Dwg. No.	9393-D0000-079		Title:	
x = ±0.5	Projection			9393-J Series	
.x = ±0.25	Unit	mm	Scale	Power Edge Connector	
.xx = ±0.15	Drawn By	XS 03/14'22			

OUPIN			
OUPIN ELECTRONIC(KUNSHAN) CO., LTD.			
P/N: 9393-J41P64P21AC05DA-A007			
SHEET	1/2	Ver. No.	R2

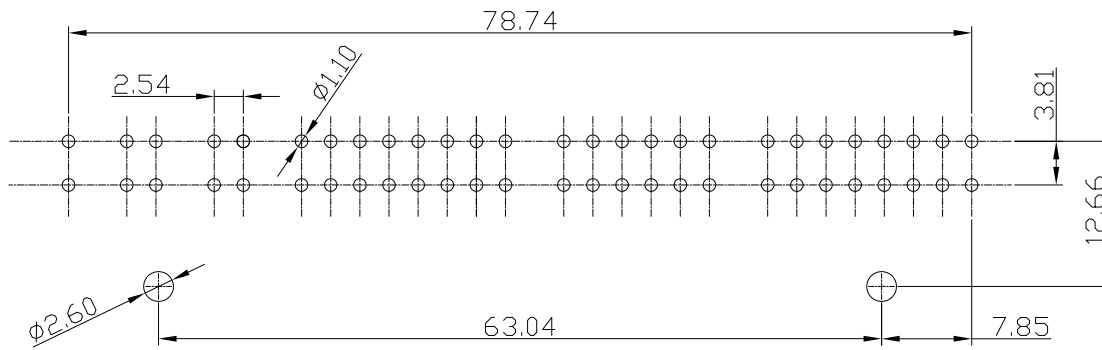
REV.	SPECIFICATION	ECN NO.	APPD.
R2		ECN220326	



RECOMMENDED MATTING BOARD FOOTPRINT
(Tolerance:±0.05)



DETAIL:A-A
SCALE :2:1



P.C. Board Layout
(Tolerance:±0.05) (Top View)

Tolerances	Dwg. No.	9393-D0000-079	Title:	
x = ±0.5	Projection		9393-J Series	
.x = ±0.25	Unit	mm	Scale	1:1
.xx = ±0.15	Drawn By	XS 03/14'22	Power Edge Connector	

OUPIIN ELECTRONIC(KUNSHAN) CO., LTD.			
P/N: 9393-J41P64P21AC05DA-A007			
SHEET	2/2	Ver. No.	R2