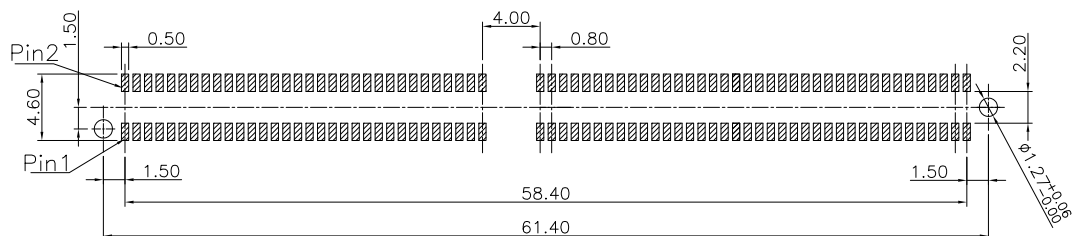
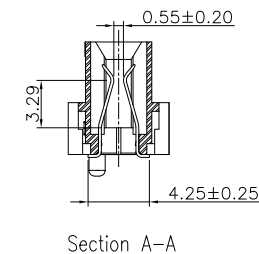
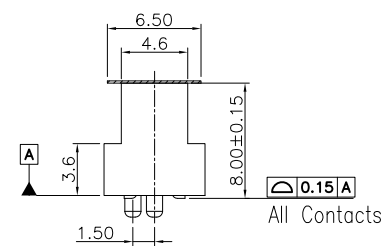
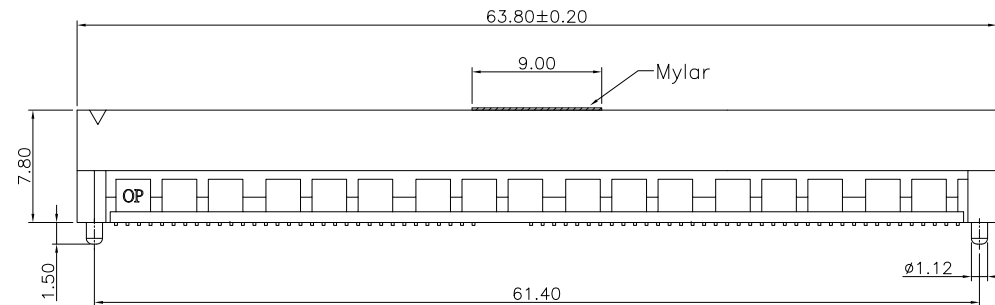
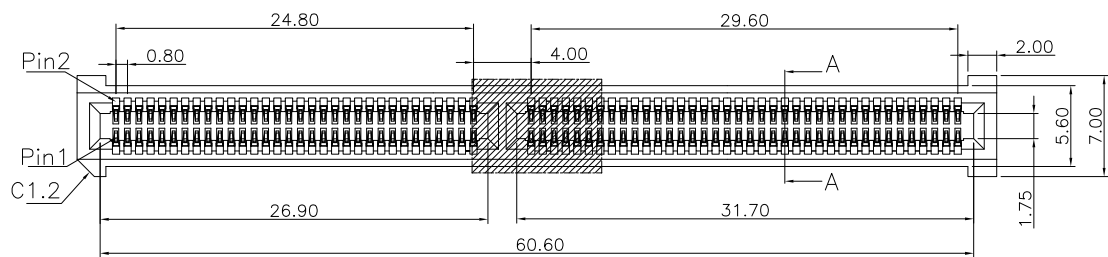


REV.	SPECIFICATION	ECN NO.	APPD.
X1	NEW		



P.C. Board Layout  
(Tolerance ±0.05)

8206- 2 X 70 C xx D P 1 T - S

Series ————  
Double Row ————  
Position Per Row ————  
C: Selective Gold Plated ————  
10: 10µ"  
30: 30µ"  
D: SMD Type ————

S: Mylar  
P: Plastic Pad  
T: Tape&Reel Package  
U: Tube Package  
1: With Front Key  
P: With Post  
N: Without Post

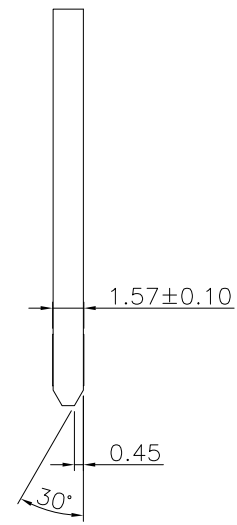
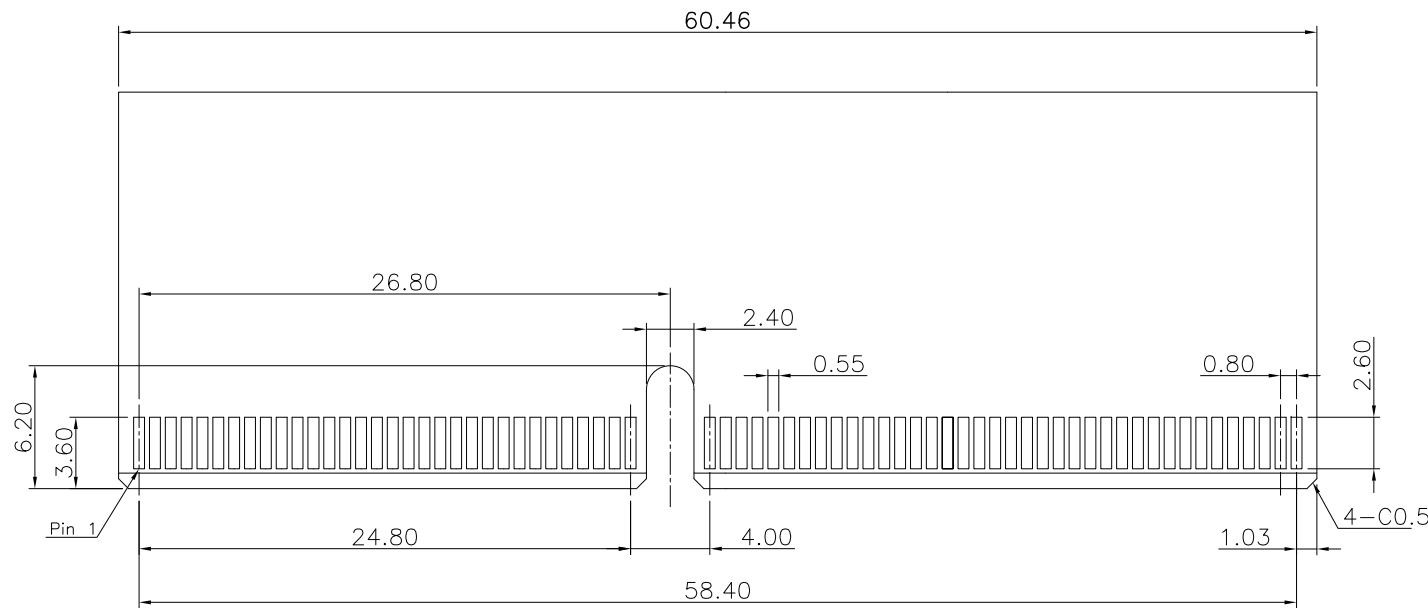
PROPOSAL ONLY

Tolerances	Dwg. No.	8206-D0000-037	
x = ±0.50	Projection		
.x = ±0.25	Unit	mm	Scale 1:1
.xx = ±0.15	Drawn By	GYJ 06/15/21'	

Title:  
8206 Series  
Edge Card Connector  
0.80mm (0.0315") Pitch SMD Type


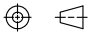
<b>OUPIN</b>			
OUPIN ELECTRONIC(KUNSHAN) CO., LTD.			
P/N: 8206-2X70CxxDP1T-S			
SHEET	1/2	Ver.No.	X1

REV.	SPECIFICATION	ECN NO.	APPD.
X1	NEW		



**RECOMMENDED MATTING BOARD FOOTPRINT**  
(Tolerance: ±0.05)

PROPOSAL ONLY

Tolerances	Dwg.No.	8206-D0000-037		Title: 8206 Series Edge Card Connector 0.80mm (0.0315") Pitch SMD Type	 <b>OUPIIN ELECTRONIC(KUNSHAN) CO., LTD.</b>		
	x = ±0.50	Projection					
	.x = ±0.25	Unit	mm			Scale	1:1
	.xx = ±0.15	Drawn By	GYJ 06/15/21'			SHEET	2/2
					Ver.No.	X1	