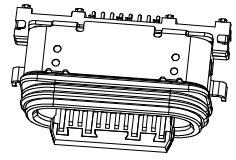
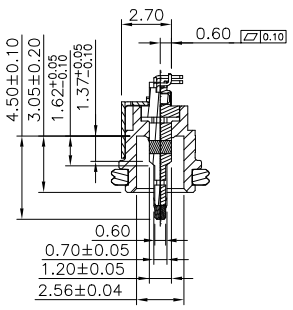
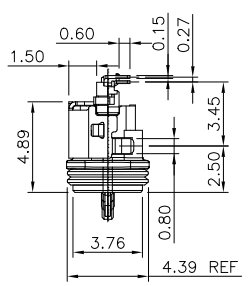
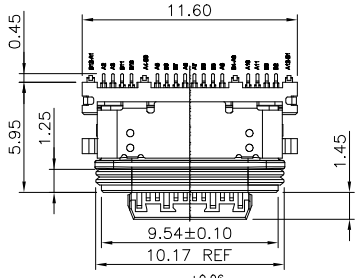
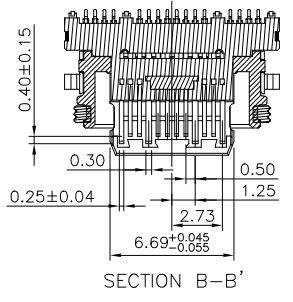
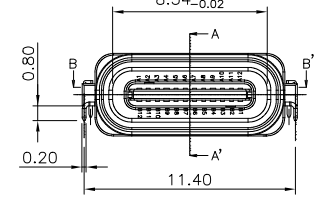


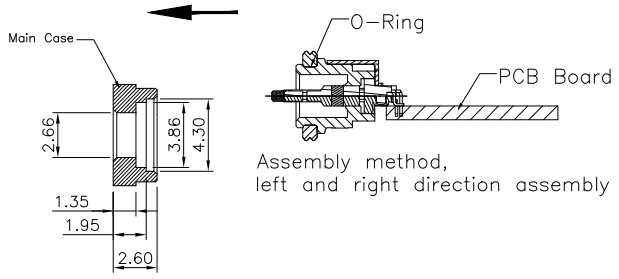
REV.	SPECIFICATION	ECN NO.	APPD.



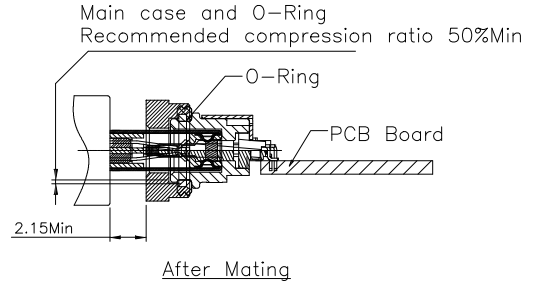
SECTION A-A'



SECTION B-B'

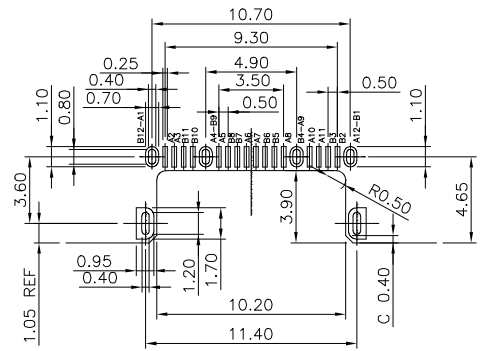
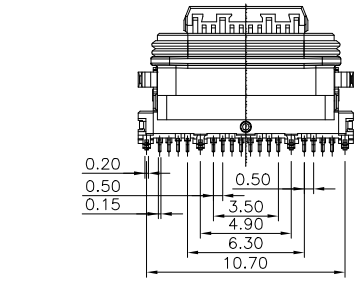


Assembly method, left and right direction assembly



After Mating

Material:
Housing: LCP, UL94V-0, Black.
Contacts: Brass, Gold Plated on Contact Area and 80u" Tin Plated on Solder Tail over Nickel 50u".
Shell: Stainless Steel, 50u" Nickel Plated.
O-Ring: Silicone, Black.
Electrical Characteristics:
Current Rating: 5A for VBUS & GND Pin.
1.25A for VCONN Pin.
0.25A for other Pin.
Dielectric Withstanding Voltage: AC 100V.
Insulation Resistance: 100MΩ min.
Contact Resistance: 40mΩ max.
Operating Temperature: -40°C~+85°C.
***RoHS Compliant**
***IPX8**



Recommend P.C.B Layout
Tolerance ±0.05

8976WP- C 24 C 00 RD B 1 N T
Series ————
Type C ————
Positions ————
C: Selective Gold Plated
00: Gold Flash
RD: RA, Solder+SMD
Type 1
N: Without Post
B: Black
T: Tape & Reel Package

Pin	Signal Name	Mating Sequence	Pin	Signal Name	Mating Sequence
A1	GND	First	B12	GND	First
A2	SSTXp1	Second	B11	SSRXp1	Second
A3	SSTXn1	Second	B10	SSRXn1	Second
A4	Vms	First	B9	Vms	First
A5	CC1	Second	B8	SBU2	Second
A6	Dp1	Second	B7	Dn2	Second
A7	Dn1	Second	B6	Dp2	Second
A8	SBU1	Second	B5	CC2	Second
A9	Vms	First	B4	Vms	First
A10	SSRXn2	Second	B3	SSTXn2	Second
A11	SSRXp2	Second	B2	SSTXp2	Second
A12	GND	First	B1	GND	First
SHELL	GND		SHELL	GND	

Tolerances	Dwg. No.	S3220240125-01		Title:	8976WP Series USB4 Type C Right Angle Solder+SMD Type Waterproof	
.x = ±0.38	Projection	⊕ ⊖		Scale	1:N	
.xx = ±0.25	Unit	mm	Scale	1:N		
.xxx = ±0.13	Drawn By	Martin 01/25'24		Sheet	668	

OUPIN			
OUPIN ELECTRONIC(KUNSHAN) CO., LTD.			
P/N: 8976WP-C24C00RDB1NT			
SHEET	1/1	Ver.No.	X1