

REV.	SPECIFICATION	ECN NO.	APPD.
R4		ECN220326	

### Material and Plating:

Housing:LCP, UL94V-0 , BLACK.

Power Contacts:High Conductivity Copper.

5u" gold plated on Contact Area and 80u" min Tin Plated on Solder Tail over nickel 50u" min.

### Electrical Characteristics:

Current Rating: UL Certified 12.5A, UL/CSA certified 7A.

Dielectric Withstanding Voltage: AC 1000V For 1 minute.

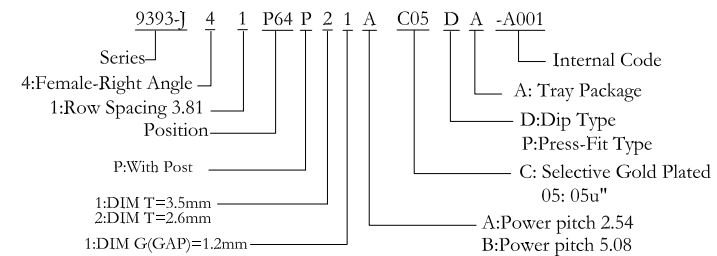
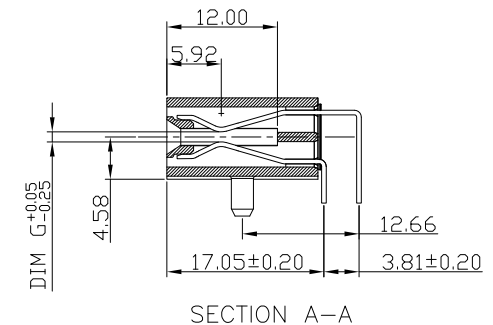
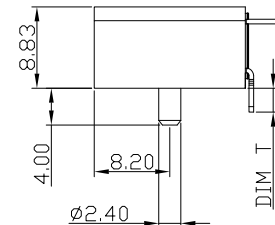
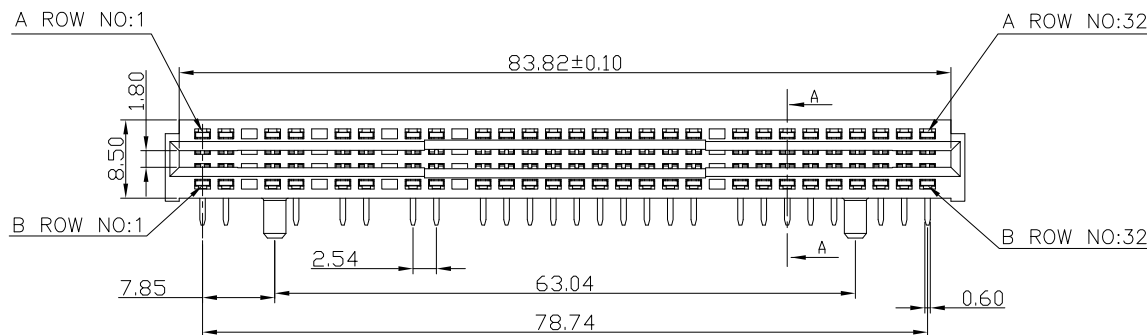
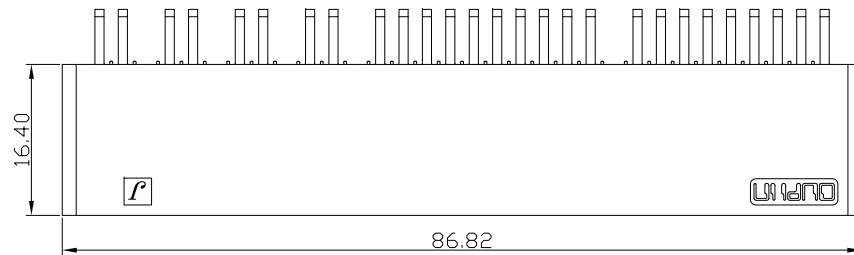
Insulator Resistance: 5000MΩ min. at DC 500V.


Contact Resistance: 2.5mΩ max. at DC 100mA.

Operating Temperature: -55°C ~+105°C .

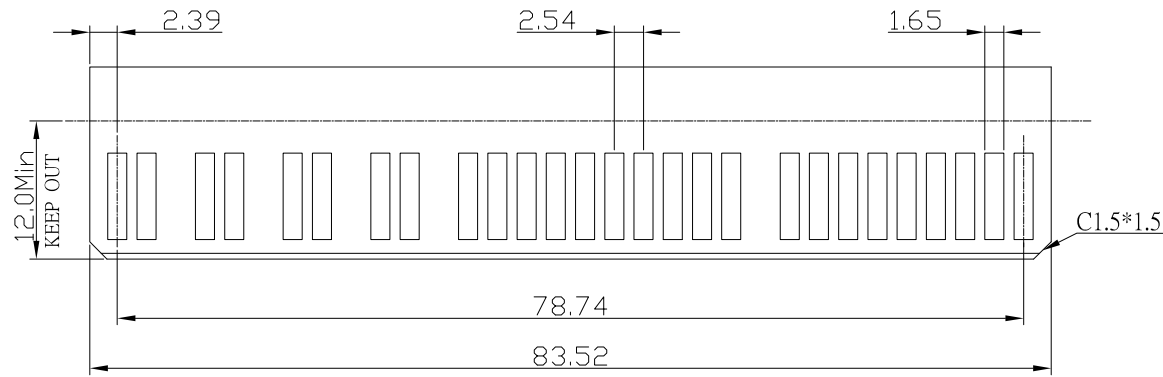
### \*RoHS Compliant

\*Note: A,B RowP3,P6,P9,P12,P23 Without Contact

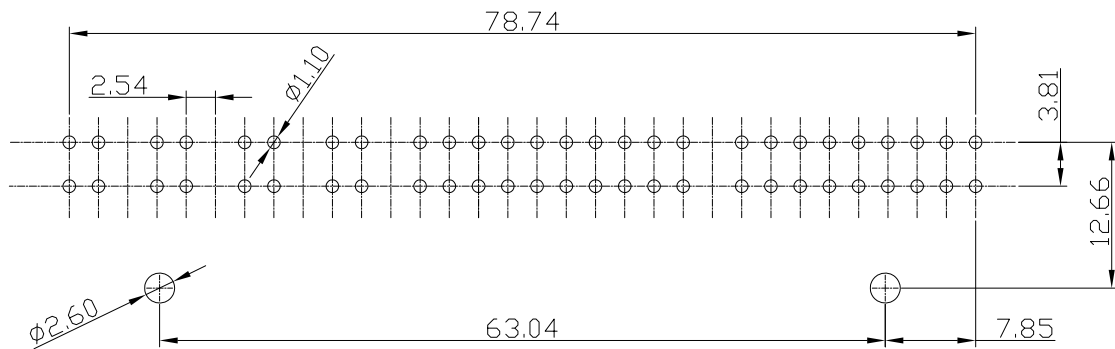


Tolerances	Dwg. No.	9393-D0000-036	Title:		 <b>OUPIN ELECTRONIC(KUNSHAN) CO., LTD.</b> P/N: 9393-J41P64P21AC05DA-A001					
x = ±0.5	Projection		9393-J Series							
.x = ±0.25	Unit	mm	Scale	1:1	Power Edge Connector		SHEET	1/2	Ver. No.	R4
.xx = ±0.15	Drawn By	XS 03/16'22								

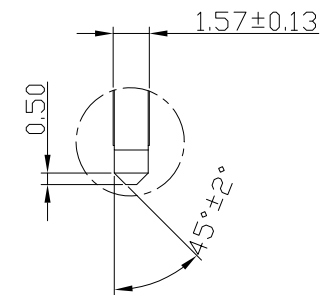
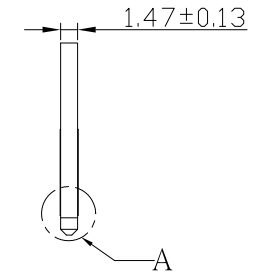
REV.	SPECIFICATION	ECN NO.	APPD.
R4		ECN220326	



RECOMMENDED MATTING BOARD FOOTPRINT  
(Tolerance: ±0.05)



P.C. Board Layout  
(Tolerance: ±0.05) (Top View)



DETAIL: A-A  
SCALE: 2:1

Tolerances	Dwg. No.	9393-D0000-036	Title:		<p style="text-align: center;"><b>OUPIN</b> OUPIN ELECTRONIC(KUNSHAN) CO., LTD. P/N: 9393-J41P64P21AC05DA-A001</p>			
x = ±0.5	Projection		9393-J Series					
.x = ±0.25	Unit	mm	Scale	1:1				
.xx = ±0.15	Drawn By	XS 03/16'22	Power Edge Connector					