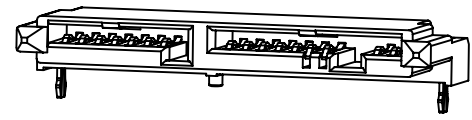
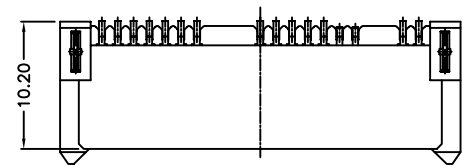


REV.	SPECIFICATION	ECN NO.	APPD.



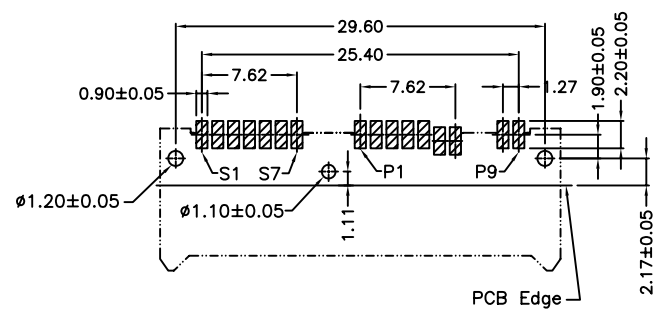
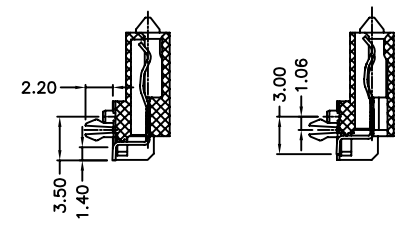
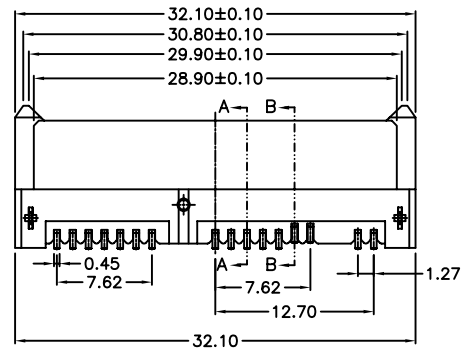
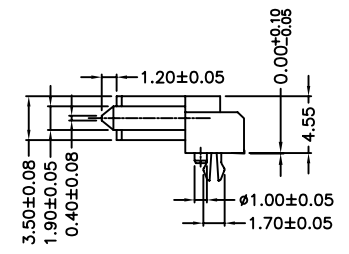
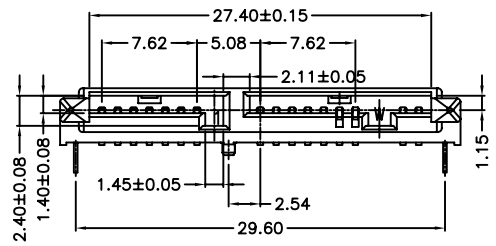
**Material:**

Housing: High Temperature Plastic UL94V-0.  
 Contacts: Copper Alloy.

**Electrical Characteristics:**

Current Rating: 1.5 AMP.  
 Dielectric Withstanding Voltage: 500 V AC.  
 Insulator Resistance: 1000MΩ min.  
 Contact Resistance: 30mΩ max.  
 Operating Temperature: -55°C ~ +85°C.

**\*RoHS Compliant**



P.C.Board Layout

7904- 16 F C 15 D B A - 02  
 Series Position Female C:Selective Gold Plated 15:15u" D:SMD B:Reverse A:Tray Package

Pin Number	Signal Name	Pin Number	Power Line Designation
		P1	+3.3V
		P2	+3.3V
S1	GND	P3	GND
S2	RX+	P4	GND
S3	RX-	P5	+5.5V
S4	GND	P6	+5.5V
S5	TX-	P7	DAS/DSS
S6	TX+	P8	Optional
S7	GND	P9	Optional

<b>Tolerances</b>	<b>Drawn No.</b>	7904D02002
x = ±0.5	<b>Projection</b>	
.x = ±0.38	<b>Unit</b>	mm
.xx = ±0.25	<b>Scale</b>	2:1
	<b>Drawn By</b>	Lupa 02/21'11

**Title:**  
 7904 Series  
 Micro Sata 7+7+2P  
 Reverse Female

<b>OUPIN</b>			
OUPIN ELECTRONIC(KUNSHAN) CO., LTD.			
P/N: 7904-16FC15DBA-02			
<b>SHEET</b>	1/1	<b>Ver.No.</b>	A1