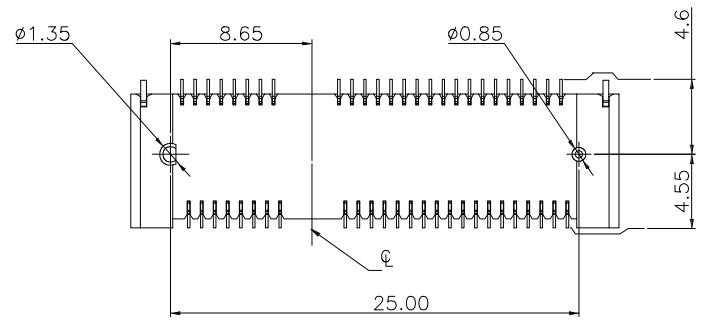
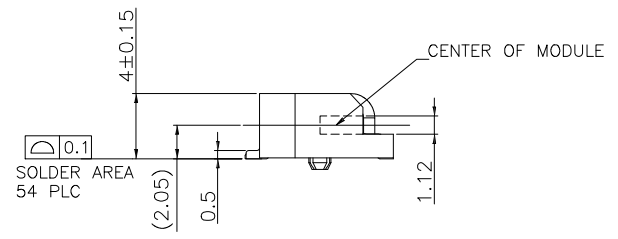
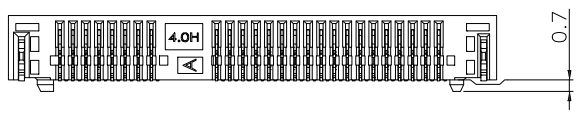
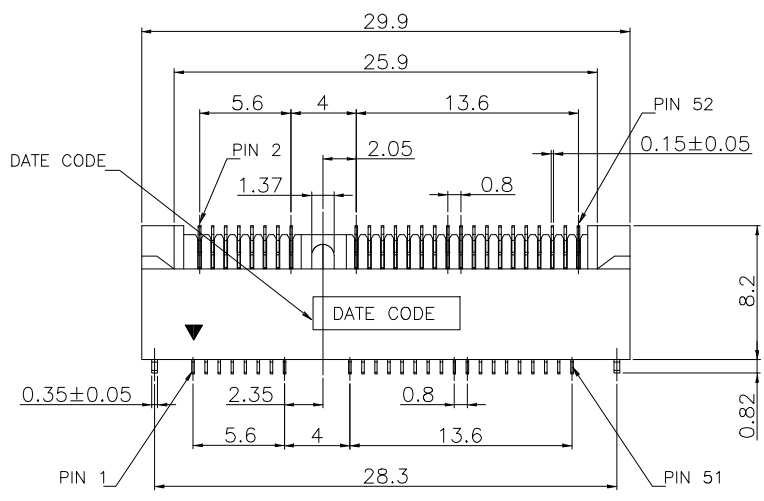


REV.	SPECIFICATION	ECN NO.	APPD.

Material:
Housing: LCP, UL94V-0, Black.
Contacts: Phosphor Bronze, Gold Plated on Contact Area and Gold Flash on Solder Tail over Nickel 50u".
Solder Tab: Brass, 120u" Matte Tin Plated over Nickel 50u".
Electrical Characteristics:
Current Rating: 0.5A.
Dielectric Withstanding Voltage: AC 300V.
Insulation Resistance: 500MΩ min.
Contact Resistance: 55mΩ max.
Operating Temperature: -55°C~+85°C.
***RoHS Compliant**

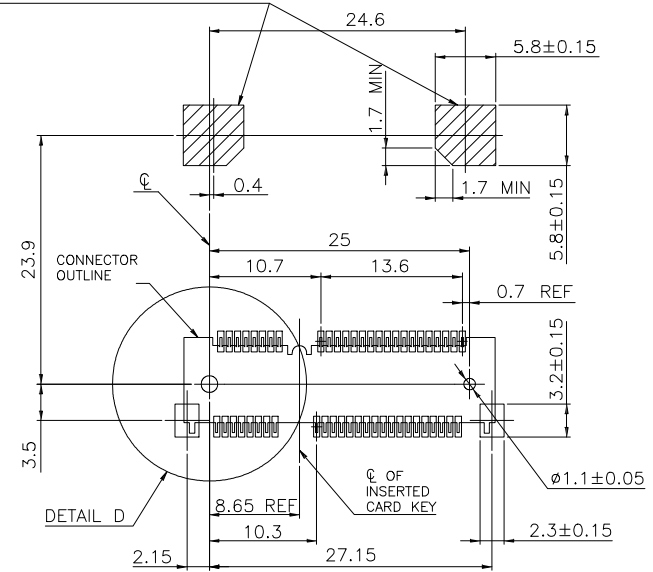


8402-A 52 G 00 A 1 T
Series — 8402-A
Positions — 52
G:Gold Plated
00:Gold Flash
10:10u"
30:.30u"
A:Top Mount Type
T:Tape & reel Package
2:4.0mm Height

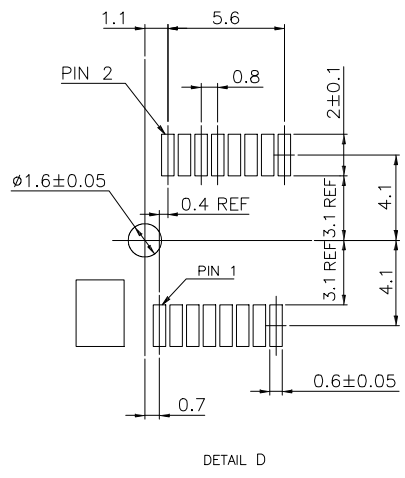
Tolerances x. = ±0.40 .x = ±0.30 .xx = ±0.20 .xxx = ±0.15	Dwg. No.	S2620230720-04		Title: 8402-A Series Mini PCI Express H:4.0mm ① 716	 OUPIIN ELECTRONIC(KUNSHAN) CO., LTD. P/N: 8402-A52G00A1T				
	Projection								
	Unit	mm	Scale		1:N	SHEET	1/4	Ver.No.	X2
	Drawn By	Martin 09/01'23							

REV.	SPECIFICATION	ECN NO.	APPD.

COMPONENT KEEP OUT AREA FOR CARD HOLD DOWN SOLUTION

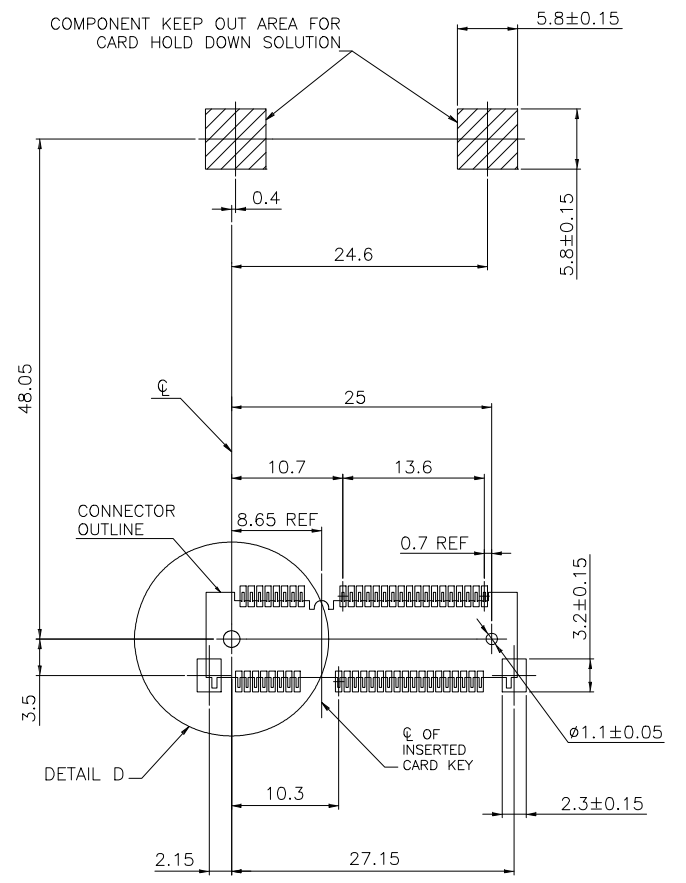


RECOMMENDED P.C. BOARD PATTERN LAYOUT FOR HALF CARD CONNECTOR

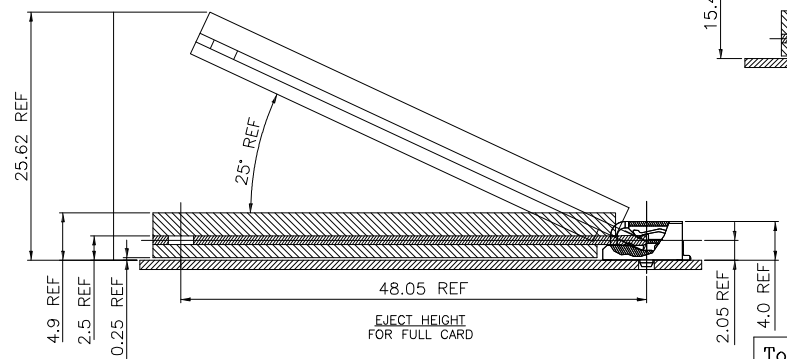


DETAIL D

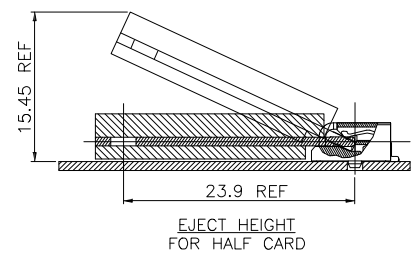
COMPONENT KEEP OUT AREA FOR CARD HOLD DOWN SOLUTION



RECOMMENDED P.C. BOARD PATTERN LAYOUT FOR FULL CARD CONNECTOR



EJECT HEIGHT FOR FULL CARD



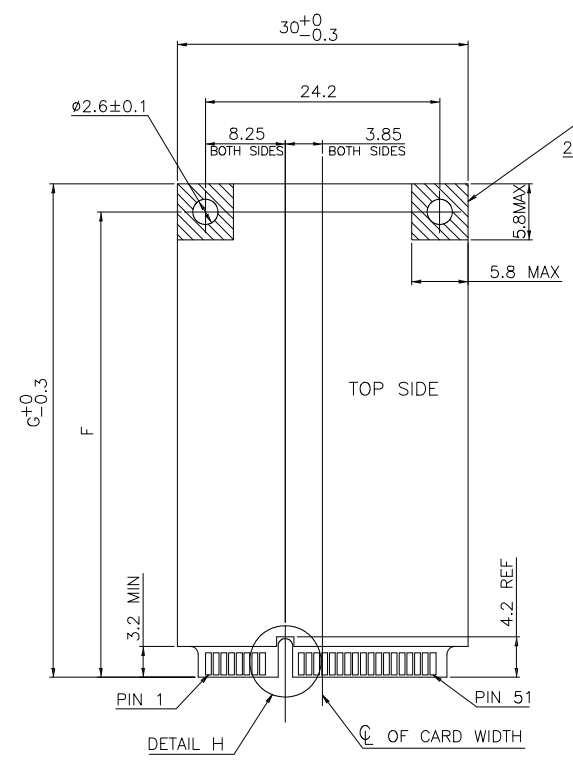
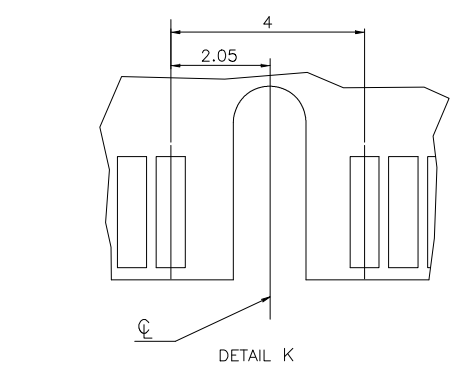
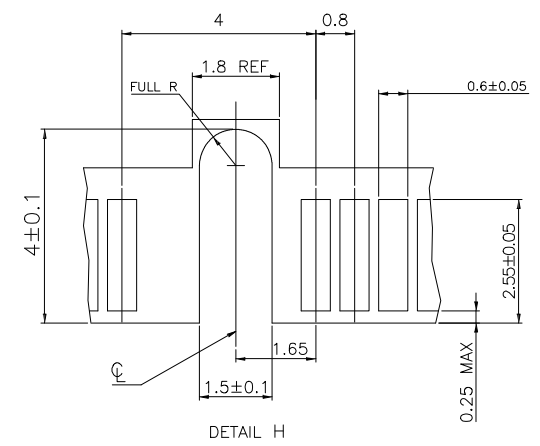
EJECT HEIGHT FOR HALF CARD

Tolerances	Dwg. No.	S2620230720-04		Title:	
x. = ±0.40	Projection	⊕ ↗		8402-A Series	
.x = ±0.30	Unit	mm	Scale	1:N	
.xx = ±0.20	Drawn By	Martin 09/01'23		Mini PCI Express H:4.0mm	
.xxx = ±0.15				① 716	

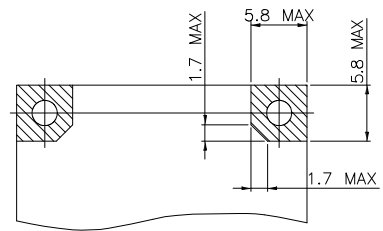
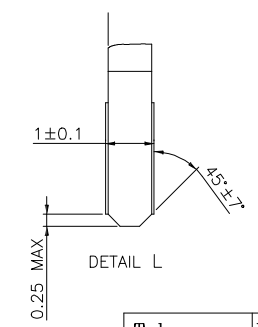
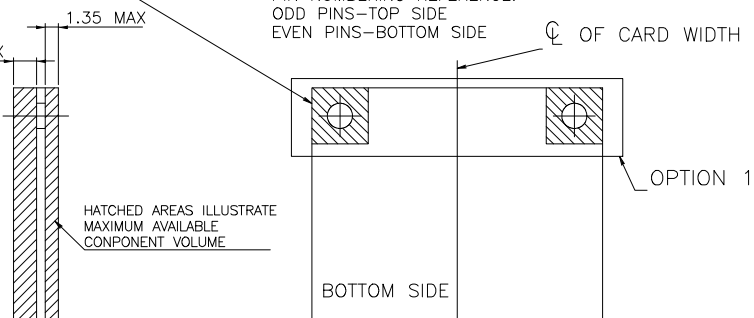
OUPIN			
OUPIN ELECTRONIC(KUNSHAN) CO., LTD.			
P/N: 8402-A52G00A1T			
SHEET	2/4	Ver.No.	X2

REV.	SPECIFICATION	ECN NO.	APPD.

F	G	FULL-MINI CARD
48.05	50.95	
23.9	26.8	HALF-MINI CARD



COMPONENT AND ROUTING (ALL LAYERS)
KEEP OUT AREA FOR HOLD DOWN SOLUTIONS



HATCHED AREAS ILLUSTRATE
MAXIMUM AVAILABLE
COMPONENT VOLUME

PIN NUMBERING REFERENCE:
ODD PINS-TOP SIDE
EVEN PINS-BOTTOM SIDE

FOR PCI EXPRESS MINI CARD

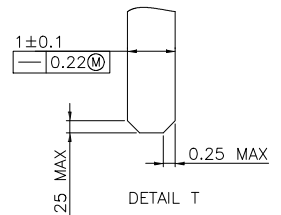
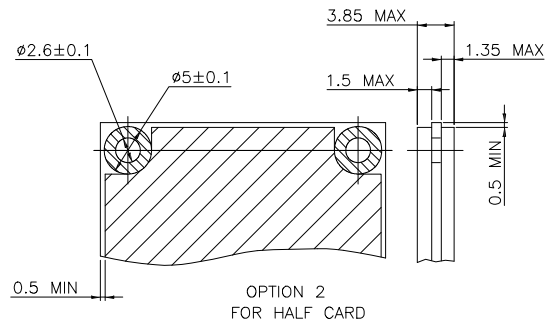
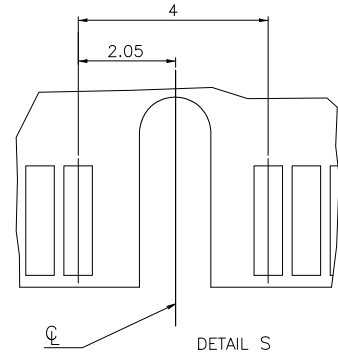
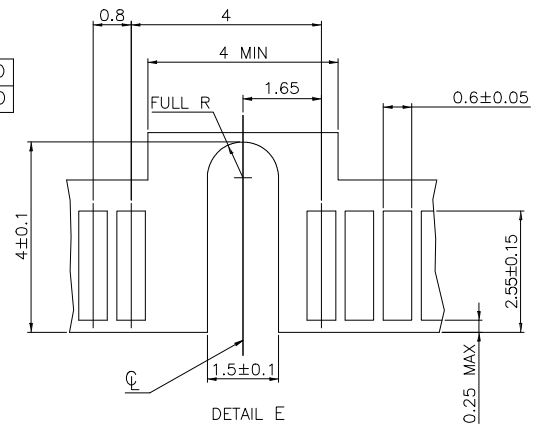
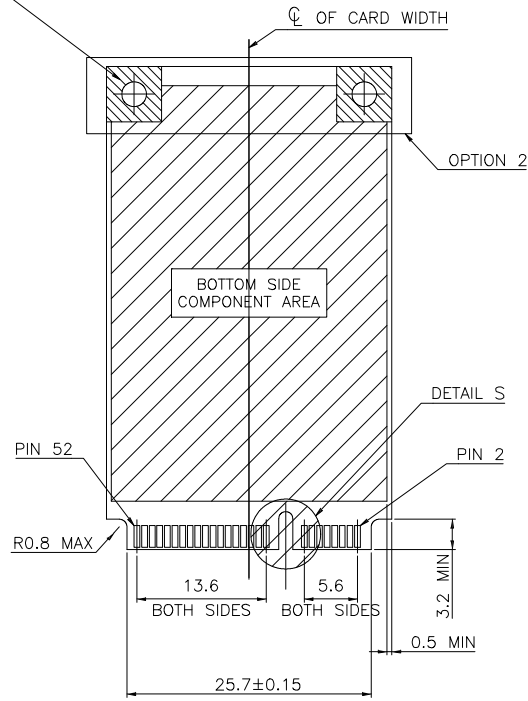
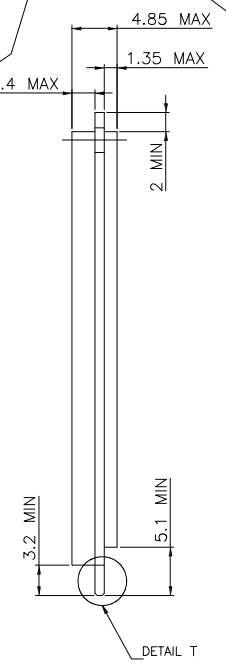
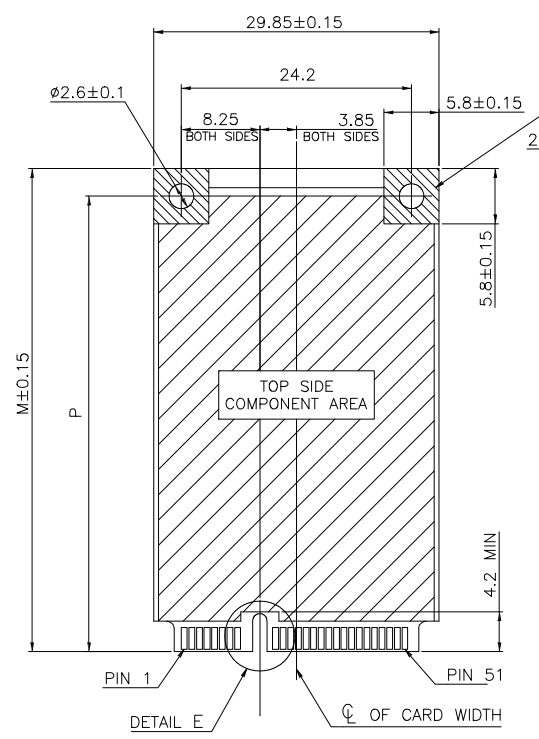
Tolerances	Dwg. No.	S2620230720-04	Title:	8402-A Series
x. = ±0.40	Projection	⊕ ↗	Unit	mm
.x = ±0.30	Scale	1:N	Drawn By	Martin 09/01'23
.xx = ±0.20				
.xxx = ±0.15				

Mini PCI Express H:4.0mm
716

OUPIN			
OUPIN ELECTRONIC(KUNSHAN) CO., LTD.			
P/N: 8402-A52G00A1T			
SHEET	3/4	Ver.No.	X2

REV.	SPECIFICATION	ECN NO.	APPD.

P	M	
48.05	50.8	FULL CARD
23.9	26.8	HALF CARD



FOR mSATA

Tolerances	Dwg. No.	S2620230720-04	Title:	8402-A Series
x. = ±0.40	Projection	⊕ ↗	Unit	mm
.x = ±0.30	Scale	1:N	Scale	1:N
.xx = ±0.20	Drawn By	Martin 09/01'23	Drawn By	Martin 09/01'23
.xxx = ±0.15				

Mini PCI Express H:4.0mm
 716

OUPIIN			
OUPIIN ELECTRONIC(KUNSHAN) CO., LTD.			
P/N: 8402-A52G00A1T			
SHEET	4/4	Ver.No.	X2