

REV.	SPECIFICATION	ECN NO.	APPD.
X5			

Material and Plating:

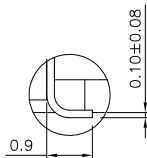
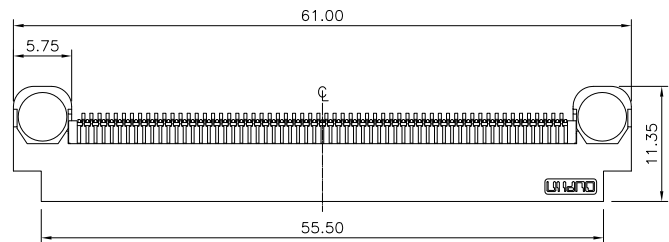
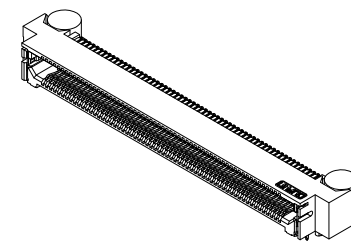
Housing: LCP, UL94V-0, Black.
 Contacts: Phosphor Bronze
 Gold Plated on Contact Area and 80u" Min
 Tin Plated on Solder Tail over nickel 50u" Min .
 Counterweight: Brass

Latches: Phosphor Bronze

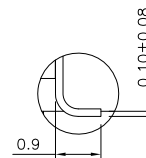
Electrical Characteristics:

Current Rating: 1.4 AMP.
 Dielectric Withstanding Voltage: AC 900V.
 Insulation Resistance: 50000MΩ min.
 Contact Resistance: 25mΩ max.
 Operating Temperature: -55°C~+125°C.

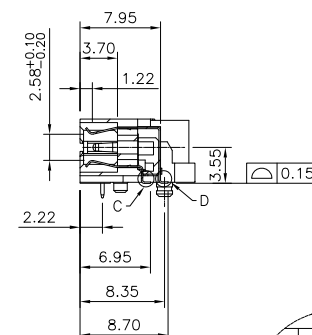
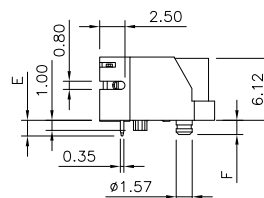
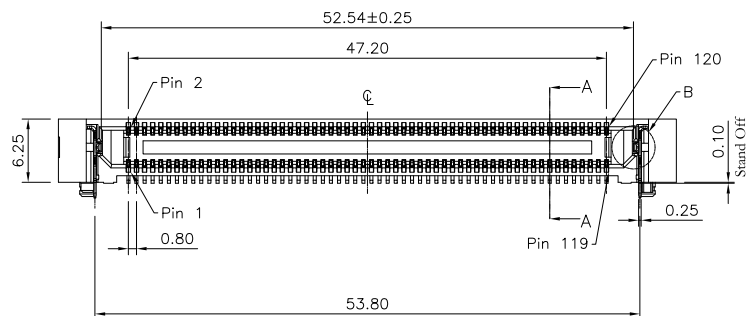
***RoHS Compliant**



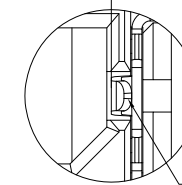
Detail C
Scale 5:1



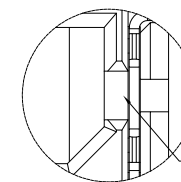
Detail D
Scale 5:1



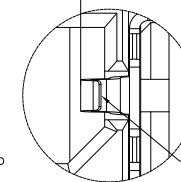
Section A-A



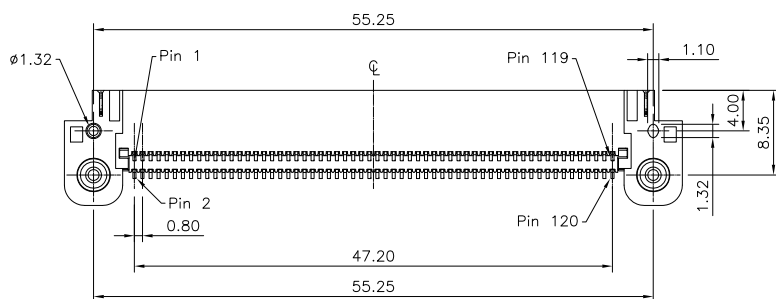
Detail B (FIG 1)
Scale 4:1



Detail B (FIG 3)
Scale 4:1



Detail B (FIG 2)
Scale 4:1



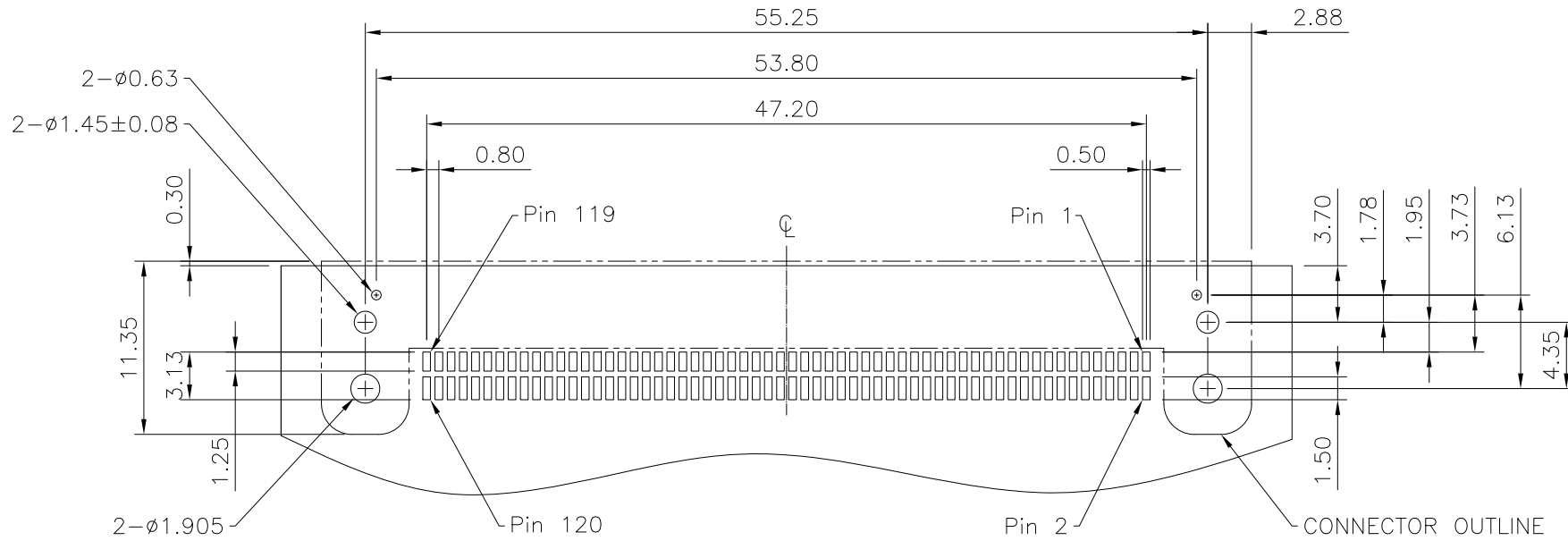
Series: 2386- 4 2 X 60 C 3 D 1 M NG T
 4:Female Right Angle
 Double Row
 Position Per Row
 C: Selective Gold Plated
 3: 10g"
 7: 30g"
 D:SMD Type
 T: Tape&Reel Package
 NG: With Lock, No Extended Guide Post, See FIG 1
 L1: With Lock, Extended Guide Post, See FIG 2
 L: With Lock, No Spring Strip, See FIG 3
 N: W/O lock
 M: Metal Post
 Blank: W/O Metal Post
 Code1-2

PCB Thickness	Code	Lock	Metal Post
Dimension		E	F
1.58	1	1.55	1.40
2.36	2	2.34	2.19

Tolerances	Dwg No.	2386-D0000-004	Title:
x = ±0.50	Projection		2386 Series
.x = ±0.25	Unit	mm	Female Right Angle
.xx = ±0.15	Scale	1:1	
	Drawn By	WP 05/24'22	

OUPIN			
OUPIN ELECTRONIC(KUNSHAN) CO., LTD.			
P/N: 2386-42X60C3D1MNGT			
SHEET	1/2	Ver.No.	X5

REV.	SPECIFICATION	ECN NO.	APPD.
X5			



Recommended PCB Layout
(Tolerance: ±0.05)

Tolerances x = ±0.50 .x = ±0.25 .xx = ±0.15	Dwg No.	2386-D0000-004		Title: 2386 Series Female Right Angle	OUPIN				
	Projection	⊕ ↗			OUPIN ELECTRONIC(KUNSHAN) CO., LTD.				
	Unit	mm	Scale		1:1	P/N: 2386-42X60C3D1MNGT			
	Drawn By	WP 05/24'22			SHEET 2/2 Ver.No. X5				