

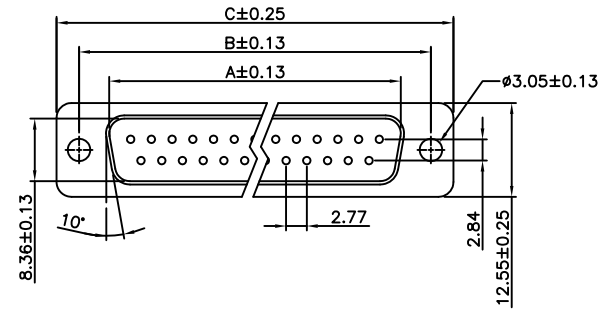
REV.	SPECIFICATION	ECN NO.	APPD.
A5			

Material:
Housing: PBT, UL94V-0.
Contacts: Brass, Gold Plated over Nickel 30u" Min.
Shell: Steel.

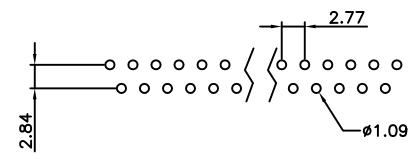
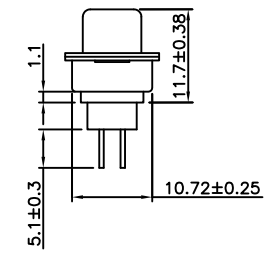
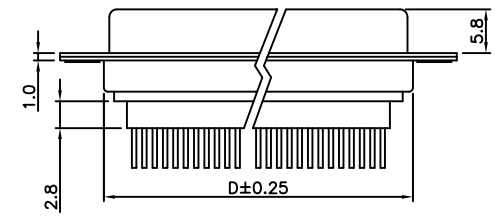
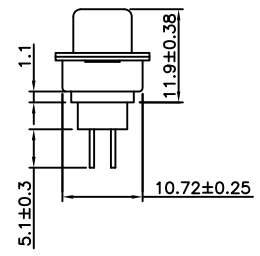
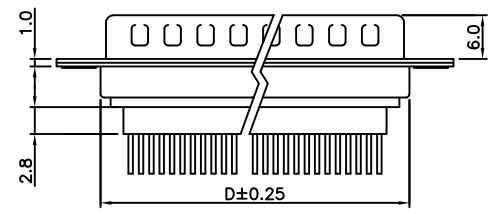
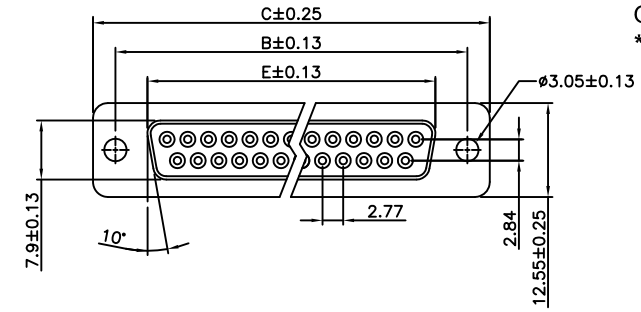
Electrical Characteristics:
Current Rating: 1 AMP.
Dielectric Withstanding Voltage: AC 1000V for 1 minute.
Insulation Resistance: 1000MΩ min. at DC 500V.
Contact Resistance: 20mΩ max. at DC 100mA.
Operating Temperature: -55°C~+105°C.

***RoHS Compliant**

Male



Female



P.C. Board Layout

7925- xx M T W G 00 A
Series ————
Position ————
M: Male
F: Female
B: Black
U: Blue
W: White
A: Tray Package
00: G/F
10: 10u"
15: 15u"
30: 30u"
G: Gold Plated

Position	Dimension				
	A	B	C	D	E
9	16.92	24.99	30.81	19.28	16.33
15	25.25	33.32	39.14	27.51	24.66
25	38.96	47.04	53.04	41.30	38.38
37	55.42	63.50	69.32	57.71	54.84

Tolerances	Dwg. No.	7925D3001
x = ±0.50	Projection	
.x = ±0.25	Unit	mm
.xx = ±0.15	Scale	1:1
	Drawn By	jia-chi 12/18'17

Title:
7925 Series
D-SUB Straighe
With Filter Type
0767

OUPIN
OUPIN ELECTRONIC(KUNSHAN) CO., LTD.
P/N: 7925-xxMTWG00A & 7925-xxFTWG00A

SHEET	1/1	Ver.No.	A5
--------------	-----	----------------	----