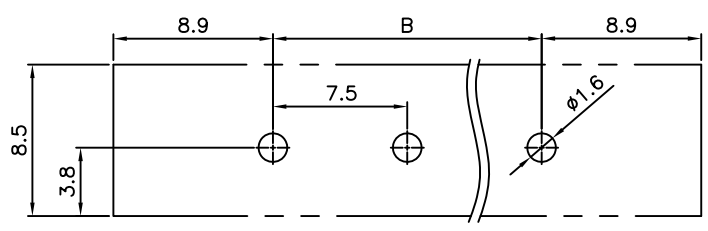
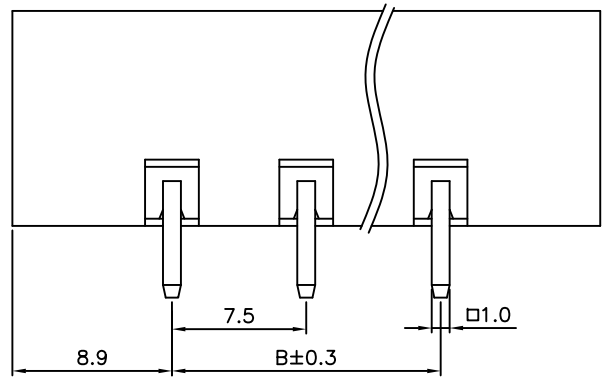
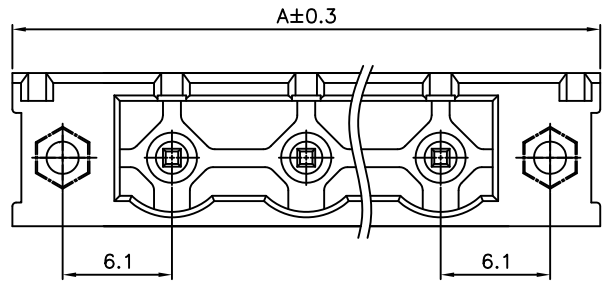
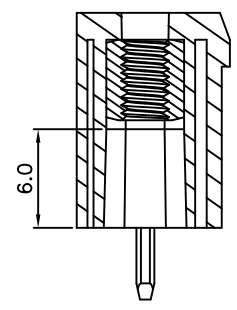
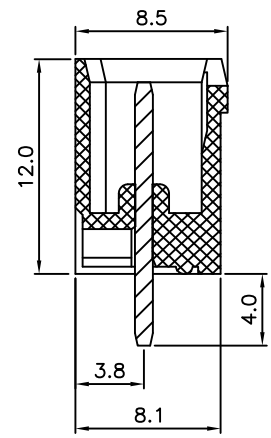


REV.	SPECIFICATION	ECN NO.	APPD.



P.C.Board Layout



Material:

Housing: Thermoplastic Polyester UL94V-0.
 Contact Pin: Copper Alloy, Tin Plated.
 Flange NUT: Copper Alloy, M2.5.

Electrical Characteristics:

Voltage Rating: 300V.
 Current Rating: 20A.
 Withstanding Voltage: 1.6KV.
 Operating Temperature: $-40^{\circ}\text{C} \sim +115^{\circ}\text{C}$.

***RoHS Compliant**

8930- I 085120 G CA xx S B
 Series I: Pitch Manufacturing G: Green CA: With Flange No. of Positions S: Straight B: Bulk Package for 2~4Pos.
 7.5mm Code U: Blue Y: Grey Box Package for 5~16Pos.

Position	02 Thru 16
Dimension	
A	No. of Positions * 7.5 + 10.3
B	(No. of Positions - 1) * 7.5

Tolerances	Dwg. No.	8930D01006
x = ± 0.5	Projection	\oplus ∇
.x = ± 0.30	Unit	mm
.xx = ± 0.15	Scale	1:1
	Drawn By	FL10/05'12

Title: 8930 Series
 7.5mm Terminal Block
 (8500-xxMTS11-03)
 780

OUPIN			
OUPIN ELECTRONIC(KUNSHAN) CO., LTD.			
P/N: 8930-1085120GCAxxSB			
SHEET	1/1	Ver.No.	A3