

REV.	SPECIFICATION	ECN NO.	APPD.

**Material:**

Housing: Thermoplastic Polyester Glass Filled UL94V-0.

Contacts: Copper Alloy.

**Electrical Characteristics:**

Current Rating: 0.5Amp.

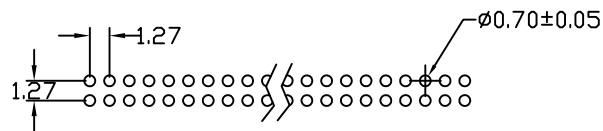
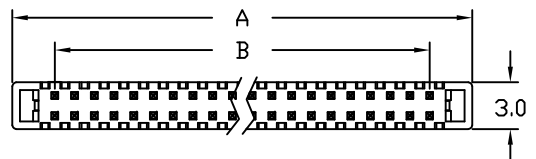
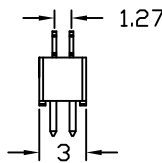
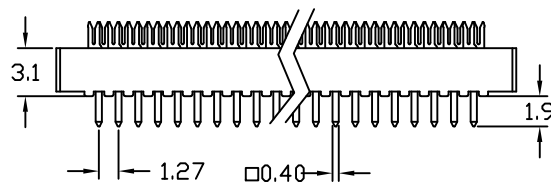
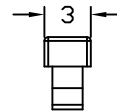
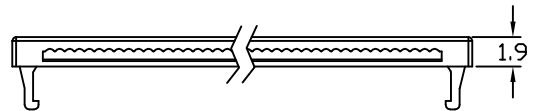
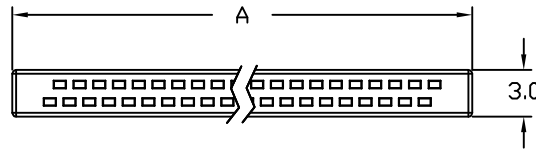
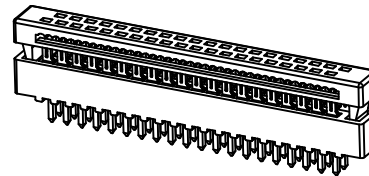
Contact Resistance: 30mΩ Max.

Insulator Resistance: 100MΩ Min.

Dielectric WithStanding Voltage: AC 250V for 1 Minute.

Operating Temperature: -40°C~+105°C

**\*RoHS Compliant**



P.C.Board Layout

6211    xx    T    B    A  
 Series    No. of Pin Count    T: Tin Plated    B: Black    A: Tray Package

Position	Dimension	
	A	B
06	8.01	2.54
08	9.28	3.81
10	10.55	5.08
12	11.82	6.35
14	13.09	7.62
16	14.36	8.89
20	16.90	11.43
22	18.17	12.70
26	20.71	15.24
30	23.25	17.78
34	25.79	20.32
40	29.60	24.13
44	32.14	26.67
50	35.95	30.48
60	42.30	36.83
68	47.38	41.91
80	55.00	49.53

Tolerances	Dwg. No.	6211D01001	
x = ±0.5	Projection	⊕ ⊖	
.x = ±0.35	Unit	mm	Scale 1:1
.xx = ±0.25	Drawn By	ZJJ 08/11'11	

Title:  
 6211 Series  
 1.27mmx1.27mm  
 Dip Plug  
 ⑦ 722

<b>OUPIN</b>			
OUPIN ELECTRONIC(KUNSHAN) CO., LTD.			
P/N:		6211-xxTBA	
SHEET	1/1	Ver.No.	A1